

# 119371 - JENNIE-O Turkey Ham Diced 1/2" 5% Water Added CN

Commodity Code: A-534/100124



2023-2024 School Year



## Ingredients

TKY HAM DICED 1/2" 5% WA CN: Ingredients: Turkey Thigh Meat, Water, Contains 2% Or Less Lite Salt (Potassium Chloride, Sodium Chloride), Sugar, Sodium Phosphate, Salt, Carrageenan, Sodium Erythorbate, Natural Smoke Flavoring, Sodium Nitrite.

## Product Information

### Product Features

- 5% Water added
- Pre-cooked
- 1/2" diced
- 2/5 LB poly bags
- IQF
- CN labeled
- Utilizes dark meat

### Product Attributes

- Great for salad bars and toppings
- Diced for labor savings, consistency and food safety
- Ready to eat – just thaw and serve
- Economical
- Nutritious alternative to pork ham
- 100% useable turkey meat – no yield loss

## Nutritional Information Per 1 OZ. MT./MT. Alternate Serving

## Nutrition Facts

105 servings per container

Serving size **1.510 OZ (42g)**

	Per Serving		Per 100gr	
		<b>50</b>		<b>119</b>
		<b>% DV*</b>		<b>% DV*</b>
<b>Calories</b>				
<b>Total Fat</b>	3g	<b>4%</b>	7.1g	<b>9%</b>
Saturated Fat	1g	<b>5%</b>	2.4g	<b>0%</b>
Trans Fat	0g		0g	
<b>Cholesterol</b>	30mg	<b>10%</b>	71.4mg	<b>25%</b>
<b>Sodium</b>	240mg	<b>10%</b>	571.4mg	<b>25%</b>
<b>Total Carbohydrate</b>	0g	<b>0%</b>	0g	<b>0%</b>
Dietary Fiber	0g	<b>0%</b>	0g	<b>0%</b>
Total Sugars	0g		0g	
Incl. Added Sugars	0g	<b>0%</b>	0g	<b>0%</b>
<b>Protein</b>	7g		16.7g	
Vitamin D	0mcg	0%	0mcg	0%
Calcium	0mg	0%	0mg	0%
Iron	0.4mg	2%	1mg	4%
Potassium	190mg	4%	452.4mg	10%

\* The % Daily Value (DV) tells you how much a nutrient in a serving of food contributes to a daily diet. 2,000 calories a day is used for general nutrition advice.

## Specifications

<b>Ship Container UPC:</b>	10042222640906	<b>Shelf Life:</b>	180 Days
<b>Pallet Pattern:</b>	12 x 9 = 108	<b>Full Pallet</b>	
Full Pallet Weight:		<b>Catch Weight?</b>	N

## Master Dimensions

<b>Case Dimensions:</b>	12.560"L x 11.380"W x 6.130"H	<b>Cubic Feet:</b>	0.50 CF
Net Weight:	10.0000 LB	Gross Weight:	10.6440 LB
<b>Pack:</b>	2 / 5 LB	<b>Servings Per Case:</b>	105

## Basic Preparation Instructions\*

Keep product frozen at 0°F. or below until ready to use. Defrost frozen product slowly and thoroughly in a refrigerator for 24 hours. Never defrost at room temperature. Upon completion of thawing process, product should be used within 5 days. Open packages and use in applications or as salad bar topping. \*For preparation by a food preparation establishment only, according to the food code or equivalent

I certify that the above information is true and correct, and that a 1.510 OZ serving of the above product (ready for serving) contain 1 OZ of cooked lean meat/meat alternate when prepared according to directions.

I further certify that any VPP used in this product is authorized as an alternate food in the Child Nutrition Programs and its use conforms to Food and Consumer Service Regulations (7CFR part s 210, 225 or 226, Appendix A).

*Amy Gronli*

Signature

Labeling and Nutritional Coordinator, Quality Assurance Dept.

Title

Amy Gronli

Printed Name

October 20, 2022

Date

Jennie-O Turkey Store Products are classified as "Buy American", meaning that the products are processed in the United States and over 51% of the cost of all components of the end item are domestic in origin as defined by the Buy American Act.



Hormel Foods Corporation  
 1 Hormel Place  
 Austin, MN 55912-3680

**Product Formulation Statement (Product Analysis) for Meat/Meat Alternate (M/MA) Products**

Product Name:	Jennie-O Fully Cooked 1/2" Diced Turkey Ham (5% Water Added)	Code No.:	119371
Manufacturer:	Hormel Foods Sales, LLC	Pack Size:	2 / 5 lbs.

**I. Meat/Meat Alternate**

Please fill out the chart below to determine the creditable amount of Meat/Meat Alternate

Description of Creditable Ingredients per Food Buying Guide	Ounces per Raw Portion of Creditable Ingredient	Multiply	Food Buying Guide Yield	Creditable Amount*
Turkey Boneless Fresh or Frozen	2.8572	X	70 %	2.0000
w/ Skin in Natural Proportions		X		
<b>A. Total Creditable Amount<sup>1</sup></b>				

\*Creditable Amount - Multiply ounces per raw portion of creditable ingredient by the Food Buying Guide yield.

**II. Alternate Protein Product (APP)**

If the product contains APP, please fill out the chart below to determine the creditable amount of APP. If APP is used, you must provide documentation as described in Attachment A for each APP used.

Description of APP, manufacturer's name, and code number	Ounces Dry APP Per Portion	Multiply	% of Protein, As-Is	Divide by 18**	Creditable Amount APP**
		X		÷ by 18	
<b>B. Total Creditable Amount<sup>1</sup></b>					
<b>C. Total Creditable Amount (A + B rounded down to nearest 1/4 oz)</b>					2.0000

\*Percent of Protein As-Is is provided on the attached APP documentation.

\*\*18 is the percent of protein when fully hydrated.

\*\*\*Creditable amount of APP equals ounces of Dry APP multiplied by the percent of protein as-is divided by 18.

<sup>1</sup>Total Creditable Amount must be rounded **down** to the nearest 0.25oz (1.49 would round down to 1.25 oz meat equivalent). Do **not** round up. If you are crediting both M/MA and APP, you do not need to round down in box A until after you have added the creditable APP amount from box B.

Total weight (per portion) of product as purchased: 1.51 oz.

Total creditable amount of product (per portion): 1.0 oz.

(Reminder: Total creditable amount cannot count for more than the total weight of product)

I certify that the above information is true and correct and that a 1.51 ounce serving of the above product (ready for serving) contains 1.0 ounces of equivalent meat/meat alternate when prepared according to directions.

I further certify that any APP used in the product conforms to the Food and Nutrition Service Regulations (7 CFR Parts 210, 220, 225, 226, Appendix A) as demonstrated by the attached supplier documentation.

Amy Gronli  
 Signature  
Amy Gronli  
 Printed Name

9/27/2022  
 Date

Labeling and Nutrition Coordinator  
 Title  
800-328-1756 ext. 7118  
 Phone Number

# 209903 - JENNIE-O Oven Roasted White Turkey Breast .5 Ounces Per Slice CN

Commodity Code: A-534/100124



2023-2024 School Year



## Ingredients

OR BRST WHT TKY SLCD .5 OZ CN: Ingredients: Turkey Breast, White Turkey, Turkey Broth, Contains 2% or Less Modified Food Starch, Potassium Chloride, Sodium Phosphate, Salt, Rosemary Extract.

## Product Information

### Product Features

- Oven roasted
- Round shape
- 12/1 LB cryovac package
- 0.5 oz. slice
- Frozen for extended shelf life
- 6 Slices = 2 oz. mt./mt. alt.
- CN labeled
- Utilizes white meat

### Product Attributes

- Pre-sliced for labor savings, consistency and food safety
- Ready to eat – just thaw and serve
- 100% useable meat – no yield loss

## Nutritional Information Per 2 OZ. MT./MT. Alternate Serving

## Nutrition Facts

64 servings per container

Serving size **3.000 OZ (84g)**

	Per Serving		Per 100gr	
	<b>110</b>		<b>131</b>	
	<b>% DV*</b>		<b>% DV*</b>	
<b>Calories</b>				
<b>Total Fat</b>	4.5g	<b>6%</b>	5.4g	<b>7%</b>
Saturated Fat	1g	<b>5%</b>	1.2g	<b>0%</b>
Trans Fat	0g		0g	
<b>Cholesterol</b>	45mg	<b>15%</b>	53.6mg	<b>20%</b>
<b>Sodium</b>	370mg	<b>16%</b>	440.5mg	<b>20%</b>
<b>Total Carbohydrate</b>	0g	<b>0%</b>	0g	<b>0%</b>
Dietary Fiber	0g	<b>0%</b>	0g	<b>0%</b>
Total Sugars	0g		0g	
Incl. Added Sugars	0g	<b>0%</b>	0g	<b>0%</b>
<b>Protein</b>	17g		20.2g	
Vitamin D	0mcg	0%	0mcg	0%
Calcium	0mg	0%	0mg	0%
Iron	0.4mg	2%	0.5mg	2%
Potassium	280mg	6%	333.3mg	8%

\* The % Daily Value (DV) tells you how much a nutrient in a serving of food contributes to a daily diet. 2,000 calories a day is used for general nutrition advice.

## Specifications

Ship Container UPC:	10042222209905	Shelf Life:	365 Days
Pallet Pattern:	12 x 11 = 132	Full Pallet	
Full Pallet Weight:		Catch Weight?	N

## Master Dimensions

Case Dimensions:	14.400"L x 9.800"W x 5.100"H	Cubic Feet:	0.41 CF
Net Weight:	12.0000 LB	Gross Weight:	12.4530 LB
Pack:	12 /1 LB	Servings Per Case:	64

## Basic Preparation Instructions\*

Keep product frozen at 0°F. or below until ready to use. Defrost product slowly and thoroughly in a refrigerator for 24 hours. Never defrost at room temperature. Upon completion of the thawing process, product should be used within 5 days. Open packages and use sliced meat in various sandwich applications. \* For preparation by a food preparation establishment only, according to the food code or equivalent.

I certify that the above information is true and correct, and that a 3.000 OZ serving of the above product (ready for serving) contain 2 OZ of cooked lean meat/meat alternate when prepared according to directions.

I further certify that any VPP used in this product is authorized as an alternate food in the Child Nutrition Programs and its use conforms to Food and Consumer Service Regulations (7CFR part s 210, 225 or 226, Appendix A).

Amy Gronli Labeling and Nutritional Coordinator, Quality Assurance Dept.  
Signature Title

Amy Gronli October 20, 2022  
Printed Name Date

Jennie-O Turkey Store Products are classified as "Buy American", meaning that the products are processed in the United States and over 51% of the cost of all components of the end item are domestic in origin as defined by the Buy American Act.



Hormel Foods Corporation  
 1 Hormel Place  
 Austin, MN 55912-3680

**Product Formulation Statement (Product Analysis) for Meat/Meat Alternate (M/MA) Products**

Product Name:	Jennie-O Fully Cooked Sliced Oven Roasted Turkey Breast with White Turkey	Code No.:	209903
Manufacturer:	Hormel Foods Sales, LLC	Pack Size:	12 / 1 lb.

**I. Meat/Meat Alternate**

Please fill out the chart below to determine the creditable amount of Meat/Meat Alternate

Description of Creditable Ingredients per Food Buying Guide	Ounces per Raw Portion of Creditable Ingredient	Multiply	Food Buying Guide Yield	Creditable Amount*
Turkey Boneless Fresh or Frozen w/ Skin in Natural Proportions	2.8603	X	70 %	2.0022
<b>A. Total Creditable Amount<sup>1</sup></b>				

\*Creditable Amount - Multiply ounces per raw portion of creditable ingredient by the Food Buying Guide yield.

**II. Alternate Protein Product (APP)**

If the product contains APP, please fill out the chart below to determine the creditable amount of APP. If APP is used, you must provide documentation as described in Attachment A for each APP used.

Description of APP, manufacturer's name, and code number	Ounces Dry APP Per Portion	Multiply	% of Protein, As-Is	Divide by 18**	Creditable Amount APP**
		X		÷ by 18	
<b>B. Total Creditable Amount<sup>1</sup></b>					
<b>C. Total Creditable Amount (A + B rounded down to nearest ¼ oz)</b>					2.0000

\*Percent of Protein As-Is is provided on the attached APP documentation.

\*\*18 is the percent of protein when fully hydrated.

\*\*\*Creditable amount of APP equals ounces of Dry APP multiplied by the percent of protein as-is divided by 18.

<sup>1</sup>Total Creditable Amount must be rounded **down** to the nearest 0.25oz (1.49 would round down to 1.25 oz meat equivalent). Do **not** round up. If you are crediting both M/MA and APP, you do not need to round down in box A until after you have added the creditable APP amount from box B.

Total weight (per portion) of product as purchased: 3.00 oz.

Total creditable amount of product (per portion): 2.0 oz.

(Reminder: Total creditable amount cannot count for more than the total weight of product)

I certify that the above information is true and correct and that a 3.00 ounce serving of the above product (ready for serving) contains 2.0 ounces of equivalent meat/meat alternate when prepared according to directions.

I further certify that any APP used in the product conforms to the Food and Nutrition Service Regulations (7 CFR Parts 210, 220, 225, 226, Appendix A) as demonstrated by the attached supplier documentation.

Amy Gronli  
 Signature  
Amy Gronli  
 Printed Name

9/27/2022  
 Date

Labeling and Nutrition Coordinator  
 Title  
800-328-1756 ext. 7118  
 Phone Number

# 256503 - JENNIE-O Turkey Ham Sliced .51 Ounce 5% Water Added CN

Commodity Code: A-534/100124



2023-2024 School Year



## Ingredients

TKY HAM SLCD .51 OZ 5% WA CN: Ingredients: Turkey Thigh Meat, Water, Contains 2% Or Less Lite Salt (Potassium Chloride, Sodium Chloride), Sugar, Sodium Phosphate, Salt, Carrageenan, Sodium Erythorbate, Natural Smoke Flavoring, Sodium Nitrite.

## Product Information

### Product Features

- 5% water added
- 94% fat free
- 12/1 LB cryovac package
- 0.51 oz. slice
- Frozen for extended shelf life
- 6 Slices = 2 oz. mt./mt. alt.
- CN labeled
- Utilizes dark meat

### Product Attributes

- Great for sandwich makers
- Pre-sliced for labor savings, consistency and food safety
- Ready to eat – just thaw and serve
- 100% useable – no yield loss

## Nutritional Information Per 2 OZ. MT./MT. Alternate Serving

# Nutrition Facts

62 servings per container

Serving size **3.060 OZ (86g)**

	Per Serving		Per 100gr	
		<b>100</b>		<b>116.3</b>
		<b>% DV*</b>		<b>% DV*</b>
<b>Calories</b>				
<b>Total Fat</b>	5g	<b>6%</b>	5.8g	<b>7%</b>
Saturated Fat	1.5g	<b>8%</b>	1.7g	<b>0%</b>
Trans Fat	0g		0g	
<b>Cholesterol</b>	60mg	<b>20%</b>	69.8mg	<b>25%</b>
<b>Sodium</b>	480mg	<b>21%</b>	558.1mg	<b>25%</b>
<b>Total Carbohydrate</b>	0g	<b>0%</b>	0g	<b>0%</b>
Dietary Fiber	0g	<b>0%</b>	0g	<b>0%</b>
Total Sugars	0g		0g	
Incl. Added Sugars	0g	<b>0%</b>	0g	<b>0%</b>
<b>Protein</b>	14g		16.3g	
Vitamin D	0mcg	0%	0mcg	0%
Calcium	0mg	0%	0mg	0%
Iron	0.7mg	4%	0.8mg	4%
Potassium	380mg	8%	441.9mg	10%

\* The % Daily Value (DV) tells you how much a nutrient in a serving of food contributes to a daily diet. 2,000 calories a day is used for general nutrition advice.

## Specifications

Ship Container UPC:	10042222256503	Shelf Life:	365 Days
Pallet Pattern:	12 x 11 = 132	Full Pallet	
Full Pallet Weight:		Catch Weight?	N

## Master Dimensions

Case Dimensions:	14.400"L x 9.800"W x 5.100"H	Cubic Feet:	0.41 CF
Net Weight:	12.0000 LB	Gross Weight:	12.4560 LB
Pack:	12 / 1 LB	Servings Per Case:	62

## Basic Preparation Instructions\*

Keep product frozen at 0°F. or below until ready to use. Defrost product slowly and thoroughly in a refrigerator for 24 hours. Never defrost at room temperature. Upon completion of the thawing process, product should be used within 5 days. Open packages and use sliced meat in various sandwich applications. \* For preparation by a food preparation establishment only, according to the food code or equivalent.

I certify that the above information is true and correct, and that a 3.060 OZ serving of the above product (ready for serving) contain 2 OZ of cooked lean meat/meat alternate when prepared according to directions.

I further certify that any VPP used in this product is authorized as an alternate food in the Child Nutrition Programs and its use conforms to Food and Consumer Service Regulations (7CFR part s 210, 225 or 226, Appendix A).

Amy Gronli Labeling and Nutritional Coordinator, Quality Assurance Dept.  
Signature Title

Amy Gronli October 20, 2022  
Printed Name Date

Jennie-O Turkey Store Products are classified as "Buy American", meaning that the products are processed in the United States and over 51% of the cost of all components of the end item are domestic in origin as defined by the Buy American Act.



Hormel Foods Corporation  
 1 Hormel Place  
 Austin, MN 55912-3680

**Product Formulation Statement (Product Analysis) for Meat/Meat Alternate (M/MA) Products**

Product Name:	Jennie-O Fully Cooked Sliced Turkey Ham	Code No.:	256503
Manufacturer:	Hormel Foods Sales, LLC	Pack Size:	12 / 1 lb.

**I. Meat/Meat Alternate**

Please fill out the chart below to determine the creditable amount of Meat/Meat Alternate

Description of Creditable Ingredients per Food Buying Guide	Ounces per Raw Portion of Creditable Ingredient	Multiply	Food Buying Guide Yield	Creditable Amount*
Turkey Boneless Fresh or Frozen	2.8572	X	70 %	2.0000
w/ Skin in Natural Proportions		X		
<b>A. Total Creditable Amount<sup>1</sup></b>				

\*Creditable Amount - Multiply ounces per raw portion of creditable ingredient by the Food Buying Guide yield.

**II. Alternate Protein Product (APP)**

If the product contains APP, please fill out the chart below to determine the creditable amount of APP. If APP is used, you must provide documentation as described in Attachment A for each APP used.

Description of APP, manufacturer's name, and code number	Ounces Dry APP Per Portion	Multiply	% of Protein, As-Is	Divide by 18**	Creditable Amount APP**
		X		÷ by 18	
<b>B. Total Creditable Amount<sup>1</sup></b>					
<b>C. Total Creditable Amount (A + B rounded down to nearest ¼ oz)</b>					2.0000

<sup>1</sup>Percent of Protein As-Is is provided on the attached APP documentation.

\*\*18 is the percent of protein when fully hydrated.

\*\*\*Creditable amount of APP equals ounces of Dry APP multiplied by the percent of protein as-is divided by 18.

<sup>1</sup>Total Creditable Amount must be rounded **down** to the nearest 0.25oz (1.49 would round down to 1.25 oz meat equivalent). Do **not** round up. If you are crediting both M/MA and APP, you do not need to round down in box A until after you have added the creditable APP amount from box B.

Total weight (per portion) of product as purchased: 3.06 oz.

Total creditable amount of product (per portion): 2.0 oz.

(Reminder: Total creditable amount cannot count for more than the total weight of product)

I certify that the above information is true and correct and that a 3.06 ounce serving of the above product (ready for serving) contains 2.0 ounces of equivalent meat/meat alternate when prepared according to directions.

I further certify that any APP used in the product conforms to the Food and Nutrition Service Regulations (7 CFR Parts 210, 220, 225, 226, Appendix A) as demonstrated by the attached supplier documentation.

Amy Gronli  
Signature

Amy Gronli  
Printed Name

9/27/2022  
Date

Labeling and Nutrition Coordinator  
Title

800-328-1756 ext. 7118  
Phone Number

# 284728 - JENNIE-O Chunked and Shredded Turkey and Gravy Precooked CN

Commodity Code: A-534/100124



2023-2024 School Year



## Ingredients

CHUNKED AND SHREDDED TKY & GRA: Ingredients: Turkey, Water, Contains 2% Or Less Modified Food Starch, Salt, Chicken Base (Chicken Meat Including Chicken Juices, Salt, Hydrolyzed Soy And Corn Protein, Sugar, Natural Flavorings, Potato Flour, Autolyzed Yeast Extract, Carrot Powder, Turmeric), Sodium Phosphate, Celery Salt, Onion Salt, Flavoring. Contains Soy.

## Product Information

### Product Features

- Fully-cooked
- Heat and serve convenience
- Consistent product
- CN labeled
- Utilizes white and dark meat

### Product Attributes

- Versatile – Can be used on its own or as an Ingredient
- Fully-Cooked with a traditional light gravy
- Easy and convenient alternative to a classic recipe
- Boil-in-Bag, steam or stove top preparation

## Nutritional Information Per 2 OZ. MT./MT. Alternate Serving

## Nutrition Facts

113 servings per container

Serving size **3.950 OZ (111g)**

	Per Serving		Per 100gr	
		<b>130</b>		<b>117.1</b>
		<b>% DV*</b>		<b>% DV*</b>
<b>Total Fat</b>	6g	<b>8%</b>	5.4g	<b>7%</b>
Saturated Fat	2g	<b>10%</b>	1.8g	<b>0%</b>
Trans Fat	0g		0g	
<b>Cholesterol</b>	55mg	<b>18%</b>	49.5mg	<b>15%</b>
<b>Sodium</b>	450mg	<b>20%</b>	405.4mg	<b>20%</b>
<b>Total Carbohydrate</b>	2g	<b>1%</b>	1.8g	
Dietary Fiber	0g	<b>0%</b>	0g	<b>0%</b>
Total Sugars	0g		0g	
Incl. Added Sugars	0g	<b>0%</b>	0g	<b>0%</b>
<b>Protein</b>	16g		14.4g	
Vitamin D	0mcg	0%	0mcg	0%
Calcium	0mg	0%	0mg	0%
Iron	0.7mg	4%	0.6mg	4%
Potassium	190mg	4%	171.2mg	4%

\* The % Daily Value (DV) tells you how much a nutrient in a serving of food contributes to a daily diet. 2,000 calories a day is used for general nutrition advice.

## Specifications

<b>Ship Container UPC:</b>	10042222284780	<b>Shelf Life:</b>	365 Days
<b>Pallet Pattern:</b>	13 x 5 = 65	<b>Full Pallet</b>	
<b>Full Pallet Weight:</b>		<b>Catch Weight?</b>	N

## Master Dimensions

<b>Case Dimensions:</b>	14.310"L x 9.310"W x 8.370"H	<b>Cubic Feet:</b>	0.64 CF
<b>Net Weight:</b>	28.0000 LB	<b>Gross Weight:</b>	28.9200 LB
<b>Pack:</b>	4 / 7 LB	<b>Servings Per Case:</b>	113

## Basic Preparation Instructions\*

Thaw Instruction: Thaw in the refrigerator at least 48 hours for single bag or up to 72 hours for multiple bags in box. DO NOT thaw at room temp. BOIL-IN-BAG METHOD: Est. Reheating Times From Frozen & Thawed State: Fill large pot with enough water to cover bag and bring to a boil on high heat. Place frozen or thawed bag of product in boiling water. Reduce to medium-high heat and continue to boil according to chart time AND until internal temperature is 140°F. as measured by a meat thermometer. Remove from water. Cut open bag and pour package contents into desired serving pan and serve. Time/Temperature: Frozen - 1 hr. 15 min./med-high; Thawed - 40 min./med-high STEAMER METHOD: Place frozen or thawed bag of product into a steam pan and place in steamer. Cook thawed product for 40 minutes, frozen product for 1 hour 15 minutes, AND until internal temperature reaches 140°F. as measured by a meat thermometer. Remove from steamer. Cut open bag and pour package contents into desired serving pan and serve. \* For preparation by a food preparation establishment only, according to the food code or equivalent.

I certify that the above information is true and correct, and that a 3.950 OZ serving of the above product (ready for serving) contain 2 OZ of cooked lean meat/meat alternate when prepared according to directions.

I further certify that any VPP used in this product is authorized as an alternate food in the Child Nutrition Programs and its use conforms to Food and Consumer Service Regulations (7CFR part s 210, 225 or 226, Appendix A).

*Amy Gronli*  
Signature

Labeling and Nutritional Coordinator, Quality Assurance Dept.  
Title

Amy Gronli  
Printed Name

October 20, 2022  
Date

Jennie-O Turkey Store Products are classified as "Buy American", meaning that the products are processed in the United States and over 51% of the cost of all components of the end item are domestic in origin as defined by the Buy American Act.



Hormel Foods Corporation  
 1 Hormel Place  
 Austin, MN 55912-3680

**Product Formulation Statement (Product Analysis) for Meat/Meat Alternate (M/MA) Products**

Product Name:	Jennie-O Pre-Cooked Turkey and Gravy White/Dark	Code No.:	284728
Manufacturer:	Hormel Foods Sales, LLC	Pack Size:	4 / 7 lbs.

**I. Meat/Meat Alternate**

Please fill out the chart below to determine the creditable amount of Meat/Meat Alternate

Description of Creditable Ingredients per Food Buying Guide	Ounces per Raw Portion of Creditable Ingredient	Multiply	Food Buying Guide Yield	Creditable Amount*
Turkey Boneless Fresh or Frozen	2.8593	X	70 %	2.0015
w/ Skin in Natural Proportions		X		
<b>A. Total Creditable Amount<sup>1</sup></b>				

\*Creditable Amount - Multiply ounces per raw portion of creditable ingredient by the Food Buying Guide yield.

**II. Alternate Protein Product (APP)**

If the product contains APP, please fill out the chart below to determine the creditable amount of APP. If APP is used, you must provide documentation as described in Attachment A for each APP used.

Description of APP, manufacturer's name, and code number	Ounces Dry APP Per Portion	Multiply	% of Protein, As-Is	Divide by 18**	Creditable Amount APP**
		X		÷ by 18	
<b>B. Total Creditable Amount<sup>1</sup></b>					
<b>C. Total Creditable Amount (A + B rounded down to nearest ¼ oz)</b>					2.0000

<sup>1</sup>Percent of Protein As-Is is provided on the attached APP documentation.

\*\*18 is the percent of protein when fully hydrated.

\*\*\*Creditable amount of APP equals ounces of Dry APP multiplied by the percent of protein as-is divided by 18.

<sup>1</sup>Total Creditable Amount must be rounded **down** to the nearest 0.25oz (1.49 would round down to 1.25 oz meat equivalent). Do **not** round up. If you are crediting both M/MA and APP, you do not need to round down in box A until after you have added the creditable APP amount from box B.

Total weight (per portion) of product as purchased: 3.95 oz.

Total creditable amount of product (per portion): 2.0 oz.

(Reminder: Total creditable amount cannot count for more than the total weight of product)

I certify that the above information is true and correct and that a 3.95 ounce serving of the above product (ready for serving) contains 2.0 ounces of equivalent meat/meat alternate when prepared according to directions.

I further certify that any APP used in the product conforms to the Food and Nutrition Service Regulations (7 CFR Parts 210, 220, 225, 226, Appendix A) as demonstrated by the attached supplier documentation.

Amy Gronli  
Signature

Amy Gronli  
Printed Name

9/27/2022  
Date

Labeling and Nutrition Coordinator  
Title

800-328-1756 ext. 7118  
Phone Number



# 612620 - JENNIE-O Smoked Uncured Turkey Frank Reduced Sodium 8 Pounds

Commodity Code: A-534/100124



2023-2024 School Year



## Ingredients

RED SOD SMKD UNCRD TKY FRANK: Ingredients: Mechanically Separated Turkey, Water, Salt, Contains 2% Or Less Seasoning (Corn Syrup Solids, Dextrose, Sugar, Paprika, Natural Flavoring), Sea Salt, Potassium Chloride, Cultured Celery Powder, Acerola Cherry Powder, Cane Sugar, Natural Smoke Flavoring.

## Product Information

### Product Features

- Frozen
- Fully cooked
- Skinless LB
- 4/5 LB packages per case

### Product Attributes

- Natural smoke flavoring along with a blend of seasonings

## Nutritional Information Per 2 OZ. MT./MT. Alternate Serving

## Nutrition Facts

160 servings per container

Serving size **2 OZ (56g)**

	Per Serving		Per 100g	
		<b>120</b>		<b>232.14</b>
		<b>% DV*</b>		<b>% DV*</b>
<b>Calories</b>				
<b>Total Fat</b>	9g	<b>13%</b>	17.85g	<b>23%</b>
Saturated Fat	3g	<b>15%</b>	5.35g	<b>0%</b>
Trans Fat	0g		0g	
<b>Cholesterol</b>	50mg	<b>17%</b>	89.28mg	<b>30%</b>
<b>Sodium</b>	260mg	<b>11%</b>	464.28mg	<b>20%</b>
<b>Total Carbohydrate</b>	1g	<b>0%</b>	1.78g	
Dietary Fiber	0g	<b>0%</b>	0g	<b>0%</b>
Total Sugars	1g		1.78g	
Incl. Added Sugars	1g	<b>2%</b>	1.78g	<b>4%</b>
<b>Protein</b>	7g		12.5g	
Vitamin D	0	0%	0mcg	0%
Calcium	50mg	4%	89.28mg	6%
Iron	0.7mg	4%	1.25mg	7%
Potassium	380mg	8%	678.57mg	15%

\* The % Daily Value (DV) tells you how much a nutrient in a serving of food contributes to a daily diet. 2,000 calories a day is used for general nutrition advice.

## Specifications

<b>Ship Container UPC:</b>	10042222612620	<b>Shelf Life:</b>	365 DAYS
<b>Pallet Pattern:</b>	8 x 10 = 80	<b>Full Pallet</b>	
<b>Full Pallet Weight:</b>	1660.80 LB	<b>Catch Weight?</b>	N

## Master Dimensions

<b>Case Dimensions:</b>	20.3"L x 11.5"W x 4.9"H	<b>Cubic Feet:</b>	0.662 FT
<b>Net Weight:</b>	20 LB	<b>Gross Weight:</b>	20.76 LB
<b>Pack:</b>	4 / 5 LB	<b>Servings Per Case:</b>	160

## Basic Preparation Instructions\*

Thawing Instructions: Instructions to thaw in refrigerator. Do NOT thaw at room temperature. Estimated Reheating Times: Stove Top: Heat water to a rolling boil. Add franks to the water and simmer until the internal temperature reaches 140°F as measured by a meat thermometer. Roller Grill: Preheat roller grill on medium heat for 15-20 minutes. Cook franks until the internal temperature reaches 140°F as measured by a meat thermometer. Steamer: Place franks on steam table pan in a single layer. Place pan in steam, close door and steam until internal temperature reaches 140° F as measured by a meat thermometer. Oven: Lay franks on a sheet pan with a little space between each one. Convection Oven: Cook time 8-10 minutes or until internal temp reaches 140°F Conventional Oven: Cook time 15-18 minutes or until internal temp reaches 140°F \*For preparation by a food preparation establishment only, according to the food code or equivalent. Microwave: Place desired number of franks evenly spaced on a microwave safe plate. Heat thawed franks on high for 30 seconds, open microwave door and let rest 10 seconds. Heat for an additional 30 seconds. Always heat until internal temperature reaches 140°F as measured by a meat thermometer. Remove from oven and serve. Oven: Preheat oven to 375°F. Remove thawed product from packaging. Lay desired number of franks in baking pan so that they are spaced out evenly. Heat thawed product for 15 minutes, AND until internal temperature reaches 140°F as measured by a meat thermometer.

I certify that the above information is true and correct, and that a 2.0 OZ serving of the above product (ready for serving) contain 2 OZ of cooked lean meat/meat alternate when prepared according to directions.

I further certify that any VPP used in this product is authorized as an alternate food in the Child Nutrition Programs and its use conforms to Food and Consumer Service Regulations (7CFR part s 210, 225 or 226, Appendix A).

*Amy Gronli*  
Signature

Labeling and Nutritional Coordinator, Quality Assurance Dept.  
Title

Amy Gronli  
Printed Name

October 20, 2022  
Date

Jennie-O Turkey Store Products are classified as "Buy American", meaning that the products are processed in the United States and over 51% of the cost of all components of the end item are domestic in origin as defined by the Buy American Act.



Hormel Foods Corporation  
 1 Hormel Place  
 Austin, MN 55912-3680

**Product Formulation Statement (Product Analysis) for Meat/Meat Alternate (M/MA) Products**

Product Name:	Jennie-O Fully Cooked Uncured Turkey Franks, 2.0 oz.	Code No.:	612620
Manufacturer:	Hormel Foods Sales, LLC	Pack Size:	4 / 5 lbs.

**I. Meat/Meat Alternate**

Please fill out the chart below to determine the creditable amount of Meat/Meat Alternate

Description of Creditable Ingredients per Food Buying Guide	Ounces per Raw Portion of Creditable Ingredient	Multiply	Food Buying Guide Yield	Creditable Amount*
Turkey Boneless Fresh or Frozen	2.0000	X	100 %	2.0000
w/ Skin in Natural Proportions		X		
<b>A. Total Creditable Amount<sup>1</sup></b>				

\*Creditable Amount - Multiply ounces per raw portion of creditable ingredient by the Food Buying Guide yield.

**II. Alternate Protein Product (APP)**

If the product contains APP, please fill out the chart below to determine the creditable amount of APP. If APP is used, you must provide documentation as described in Attachment A for each APP used.

Description of APP, manufacturer's name, and code number	Ounces Dry APP Per Portion	Multiply	% of Protein, As-Is	Divide by 18**	Creditable Amount APP**
		X		÷ by 18	
<b>B. Total Creditable Amount<sup>1</sup></b>					
<b>C. Total Creditable Amount (A + B rounded down to nearest ¼ oz)</b>					2.0000

<sup>1</sup>Percent of Protein As-Is is provided on the attached APP documentation.

\*\*18 is the percent of protein when fully hydrated.

\*\*\*Creditable amount of APP equals ounces of Dry APP multiplied by the percent of protein as-is divided by 18.

<sup>1</sup>Total Creditable Amount must be rounded **down** to the nearest 0.25oz (1.49 would round down to 1.25 oz meat equivalent). Do **not** round up. If you are crediting both M/MA and APP, you do not need to round down in box A until after you have added the creditable APP amount from box B.

Total weight (per portion) of product as purchased: 2.00 oz.

Total creditable amount of product (per portion): 2.0 oz.

(Reminder: Total creditable amount cannot count for more than the total weight of product)

I certify that the above information is true and correct and that a 2.00 ounce serving of the above product (ready for serving) contains 2.0 ounces of equivalent meat/meat alternate when prepared according to directions.

I further certify that any APP used in the product conforms to the Food and Nutrition Service Regulations (7 CFR Parts 210, 220, 225, 226, Appendix A) as demonstrated by the attached supplier documentation.

Amy Gronli

Signature

Amy Gronli

Printed Name

9/27/2022

Date

Labeling and Nutrition Coordinator

Title

800-328-1756 ext. 7118

Phone Number

# 286228 - JENNIE-O Chunked and Shredded White Turkey and Gravy Fully Cooked

Commodity Code: A-534/100124



2023-2024 School Year



## Ingredients

CHUNKED AND SHREDDED WHT TKY &: Ingredients: White Turkey, Water, Modified Food Starch, Contains 2% Or Less Chicken Base (Chicken Meat Including Chicken Juices, Salt, Hydrolyzed Soy And Corn Protein, Sugar, Natural Flavorings, Potato Flour, Autolyzed Yeast Extract, Carrot Powder, Turmeric), Salt, Sodium Phosphate, Celery Salt, Onion Salt, Flavoring. Contains Soy.

## Product Information

### Product Features

- Fully cooked
- Heat and serve convenience
- Consistent product
- CN labeled
- Utilizes white meat

### Product Attributes

- Versatile – can be used on its own or as an ingredient
- Applications: poured over toast, potatoes, rice, pot pie, lo mein noodles, etc.
- Fully cooked with a traditional light gravy
- Easy and convenient alternative to a classic recipe
- Boil-in-bag, steam or stove top preparation

## Nutritional Information Per 2 OZ. MT./MT. Alternate Serving

## Nutrition Facts

106 servings per container

Serving size **4.200 OZ (120g)**

	Per Serving		Per 100gr	
	<b>120</b>		<b>100</b>	
	% DV*		% DV*	
<b>Calories</b>				
<b>Total Fat</b>	5g	<b>6%</b>	4.2g	<b>5%</b>
Saturated Fat	1.5g	<b>8%</b>	1.2g	<b>0%</b>
Trans Fat	0g		0g	
<b>Cholesterol</b>	45mg	<b>15%</b>	37.5mg	<b>15%</b>
<b>Sodium</b>	520mg	<b>23%</b>	433.3mg	<b>20%</b>
<b>Total Carbohydrate</b>	2g	<b>1%</b>	1.7g	
Dietary Fiber	0g	<b>0%</b>	0g	<b>0%</b>
Total Sugars	0g		0g	
Incl. Added Sugars	0g	<b>0%</b>	0g	<b>0%</b>
<b>Protein</b>	18g		15g	
Vitamin D	0mcg	0%	0mcg	0%
Calcium	0mg	0%	0mg	0%
Iron	0.4mg	2%	0.3mg	2%
Potassium	280mg	6%	233.3mg	6%

\* The % Daily Value (DV) tells you how much a nutrient in a serving of food contributes to a daily diet. 2,000 calories a day is used for general nutrition advice.

## Specifications

<b>Ship Container UPC:</b>	10042222286227	<b>Shelf Life:</b>	365 Days
<b>Pallet Pattern:</b>	13 x 5 = 65	<b>Full Pallet</b>	
Full Pallet Weight:		<b>Catch Weight?</b>	N

## Master Dimensions

<b>Case Dimensions:</b>	14.310"L x 9.310"W x 8.370"H	<b>Cubic Feet:</b>	0.64 CF
Net Weight:	28.0000 LB	Gross Weight:	28.9020 LB
<b>Pack:</b>	4 / 7 LB	<b>Servings Per Case:</b>	106

## Basic Preparation Instructions\*

Thaw Instruction: Thaw in the refrigerator at least 48 hours for single bag or up to 72 hours for multiple bags in box. DO NOT thaw at room temp. BOIL-IN-BAG METHOD: Estimated Reheating Times From Frozen and Thawed State: + Fill large pot with enough water to cover bag and bring to a boil on high heat. Place frozen or thawed bag of product in boiling water. + Reduce to medium-high heat according to chart time AND until internal temperature is 140°F. as measured by a meat thermometer. + Remove from water. Cut open bag and pour package contents into desired serving pan & serve. Time/Temperature: Frozen - 1 hr. 15 min./med-high; Thawed - 40 min./med-high STEAMER METHOD: Estimated Reheating Times From Frozen and Thawed State: + Place frozen or thawed bag of product into a steam pan and place in steamer. + Heat according to chart time AND until internal temperature is 140°F. as measured by a meat thermometer. + Remove from steamer. Cut open bag and pour contents into desired Serving pan & serve. Time: Frozen - 1 hr. 15 min.; Thawed - 40 min. \* For preparation by a food preparation establishment only, according to the food code or equivalent.

I certify that the above information is true and correct, and that a 4.200 OZ serving of the above product (ready for serving) contain 2 OZ of cooked lean meat/meat alternate when prepared according to directions.

I further certify that any VPP used in this product is authorized as an alternate food in the Child Nutrition Programs and its use conforms to Food and Consumer Service Regulations (7CFR part s 210, 225 or 226, Appendix A).

*Amy Gronli*  
Signature

Labeling and Nutritional Coordinator, Quality Assurance Dept.  
Title

Amy Gronli  
Printed Name

October 20, 2022  
Date

Jennie-O Turkey Store Products are classified as "Buy American", meaning that the products are processed in the United States and over 51% of the cost of all components of the end item are domestic in origin as defined by the Buy American Act.



Hormel Foods Corporation  
 1 Hormel Place  
 Austin, MN 55912-3680

**Product Formulation Statement (Product Analysis) for Meat/Meat Alternate (M/MA) Products**

Product Name:	Jennie-O Pre-Cooked Turkey and Gravy – White	Code No.:	286228
Manufacturer:	Hormel Foods Sales, LLC	Pack Size:	4 / 7 lbs.

**I. Meat/Meat Alternate**

Please fill out the chart below to determine the creditable amount of Meat/Meat Alternate

Description of Creditable Ingredients per Food Buying Guide	Ounces per Raw Portion of Creditable Ingredient	Multiply	Food Buying Guide Yield	Creditable Amount*
Turkey Boneless Fresh or Frozen	2.8606	X	70 %	2.0024
w/ Skin in Natural Proportions		X		
<b>A. Total Creditable Amount<sup>1</sup></b>				

\*Creditable Amount - Multiply ounces per raw portion of creditable ingredient by the Food Buying Guide yield.

**II. Alternate Protein Product (APP)**

If the product contains APP, please fill out the chart below to determine the creditable amount of APP. If APP is used, you must provide documentation as described in Attachment A for each APP used.

Description of APP, manufacturer's name, and code number	Ounces Dry APP Per Portion	Multiply	% of Protein, As-Is	Divide by 18**	Creditable Amount APP**
		X		÷ by 18	
<b>B. Total Creditable Amount<sup>1</sup></b>					
<b>C. Total Creditable Amount (A + B rounded down to nearest ¼ oz)</b>					2.0000

<sup>1</sup>Percent of Protein As-Is is provided on the attached APP documentation.

\*\*18 is the percent of protein when fully hydrated.

\*\*\*Creditable amount of APP equals ounces of Dry APP multiplied by the percent of protein as-is divided by 18.

<sup>1</sup>Total Creditable Amount must be rounded **down** to the nearest 0.25oz (1.49 would round down to 1.25 oz meat equivalent). Do **not** round up. If you are crediting both M/MA and APP, you do not need to round down in box A until after you have added the creditable APP amount from box B.

Total weight (per portion) of product as purchased: 4.20 oz.

Total creditable amount of product (per portion): 2.0 oz.

(Reminder: Total creditable amount cannot count for more than the total weight of product)

I certify that the above information is true and correct and that a 4.20 ounce serving of the above product (ready for serving) contains 2.0 ounces of equivalent meat/meat alternate when prepared according to directions.

I further certify that any APP used in the product conforms to the Food and Nutrition Service Regulations (7 CFR Parts 210, 220, 225, 226, Appendix A) as demonstrated by the attached supplier documentation.

Amy Gronli  
 Signature  
 Amy Gronli  
 Printed Name

9/27/2022  
 Date

Labeling and Nutrition Coordinator  
 Title  
800-328-1756 ext. 7118  
 Phone Number

# 2022-2023 School Year

Jennie-O Turkey Store Products are classified as "Buy American", meaning that the products are processed in the United States and over 51% of the cost of all components of the end item are domestic in origin as defined by the Buy American Act.

## 317004 - JENNIE-O Turkey Breast and Thigh Roast Boneless CIB Skin On FC



Commodity Code: A-534/100124

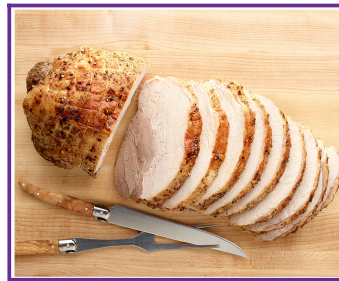
### Product Information

### Product Features

- Fully cooked whole muscle breast & thigh roast
- Natural skin-on
- Frozen
- CN Labeled
- Utilizes both white and dark meat
- Contains No Allergens or Gluten
- Meets the Alliance for a Healthier Generation criteria for protein

### Product Attributes

- Premium product for traditional turkey meals



LIST OF INGREDIENTS:  
BL BRST & THI RST CIB FC S/O C: Ingredients: Turkey Breast, Turkey Thigh, Turkey Broth, Contains 2% or less Salt, Sugar, Sodium Phosphate, Flavoring.

### Basic Preparation Instructions\*

**THAWING:** We recommend thawing before cooking. Thaw at least 48-72 hours in refrigerator or at least 10-12 hours in cold running water. Do not thaw at room temperature. Always leave in sealed plastic bag during thawing.

**ESTIMATED REHEATING TIMES: CONVENTIONAL OVEN (PREFERRED METHOD) & CONVECTION OVEN**

1. Preheat oven according to chart.
2. Cut off all packaging layers and place product into a large food pan skin side up.
3. Add 1½ cups of water to the pan and tent with foil.
4. Cook according to chart, removing the foil at designated time on chart to brown product. Continue to cook AND until internal is 140°F. as measured by a meat thermometer.
5. Remove from oven and allow product to rest for about 10-20 minutes. Serve.

**Cooking Times for Thawed Roast:**

Conventional Oven: Temp. 375° F/Total Cook Time 2hr 45 min/Cook with Foil 1 hr. 30 mins/After Foil 1 hr. 15 mins

Convection Oven: Temp 325° F/Total Cook Time 2 hr. 30mins/Cook with Foil 1 hr 15mins/After Foil 1 hr. 15mins.

**Cooking Times for Frozen Roast:**

Conventional Oven: Temp. 375° F/ Total Cook Time 4hr. 30 mins/Cook with Foil 3hr 15 mins/After Foil 1 hr 15 mins.

Convection Oven: Temp. 325° F/Total Cook time 3 hr 45 mins/Cook with Foil 2hr 30mins/After Foil 1hr 15mins

### Specifications

<b>Ship Container UPC:</b>	90042222317002
<b>Shelf Life:</b>	365 DAYS BEST IF USED BY
<b>Pallet Pattern:</b>	6 x 9 = 54
<b>Full Pallet</b>	
Full Pallet Weight:	2274.48 LB
<b>Catch Weight?</b>	Y

### Master Dimensions

<b>Case Dimensions:</b>	19.8"L x 15.3"W x 6.1"H
<b>Cubic Feet:</b>	1.069 FT
Net Weight:	40.8 LB
Gross Weight:	42.12 LB
Pack:	004/8.5-11.5 LB
Servings Per Case:	208

I certify that the above information is true and correct, and that a 2.47 OZ serving of the above product (ready for serving) contain 20 of cooked lean meat/meat alternate when prepared according to directions.

I further certify that any VPP used in this product is authorized as an alternate food in the Child Nutrition Programs and its use conforms to Food and Consumer Service Regulations (7CFR part s 210, 225 or 226, Appendix A).

*Amy Gronli*  
Signature

Labeling and Nutritional Coordinator, Quality Assurance  
Title

Amy Gronli  
Printed Name

November 16, 2021  
Date

### Nutritional Information Per 20. MT./MT. Alternate Serving

Svg Size (oz.)	Calories (Kcal)	Total Fat (g)	Sat. Fat (g)	Trans Fat (g)	Cholest. (mg)	Sodium (mg)	Carbs (g)	Fiber (g)	Sugars (g)	Protein (g)	Vit. A (%)	Calcium (%)	Vit. C (%)	Iron (%)
2.47 OZ	80	3	1	0	40	380	0	0	0	12	0	0	0	2



Hormel Foods Corporation  
 1 Hormel Place  
 Austin, MN 55912-3680

**Product Formulation Statement (Product Analysis) for Meat/Meat Alternate (M/MA) Products**

Product Name:	Jennie-O Fully Cooked Breast and Thigh Roast	Code No.:	317004
Manufacturer:	Hormel Foods Sales, LLC	Pack Size:	4 / 8.5 – 11.5 lbs.

**I. Meat/Meat Alternate**

Please fill out the chart below to determine the creditable amount of Meat/Meat Alternate

Description of Creditable Ingredients per Food Buying Guide	Ounces per Raw Portion of Creditable Ingredient	Multiply	Food Buying Guide Yield	Creditable Amount*
Turkey Boneless Fresh or Frozen	2.8639	X	70 %	2.0047
w/ Skin in Natural Proportions		X		
<b>A. Total Creditable Amount<sup>1</sup></b>				

\*Creditable Amount - Multiply ounces per raw portion of creditable ingredient by the Food Buying Guide yield.

**II. Alternate Protein Product (APP)**

If the product contains APP, please fill out the chart below to determine the creditable amount of APP. If APP is used, you must provide documentation as described in Attachment A for each APP used.

Description of APP, manufacturer's name, and code number	Ounces Dry APP Per Portion	Multiply	% of Protein, As-Is	Divide by 18**	Creditable Amount APP**
		X		÷ by 18	
<b>B. Total Creditable Amount<sup>1</sup></b>					
<b>C. Total Creditable Amount (A + B rounded down to nearest ¼ oz)</b>					2.0000

<sup>1</sup>Percent of Protein As-Is is provided on the attached APP documentation.

\*\*18 is the percent of protein when fully hydrated.

\*\*\*Creditable amount of APP equals ounces of Dry APP multiplied by the percent of protein as-is divided by 18.

<sup>1</sup>Total Creditable Amount must be rounded **down** to the nearest 0.25oz (1.49 would round down to 1.25 oz meat equivalent). Do **not** round up. If you are crediting both M/MA and APP, you do not need to round down in box A until after you have added the creditable APP amount from box B.

Total weight (per portion) of product as purchased: 3.29 oz.

Total creditable amount of product (per portion): 2.0 oz.

(Reminder: Total creditable amount cannot count for more than the total weight of product)

I certify that the above information is true and correct and that a 2.47 ounce serving of the above product (ready for serving) contains 2.0 ounces of equivalent meat/meat alternate when prepared according to directions (assuming a 25% weight loss from purchase to serving).

I further certify that any APP used in the product conforms to the Food and Nutrition Service Regulations (7 CFR Parts 210, 220, 225, 226, Appendix A) as demonstrated by the attached supplier documentation.

Amy Gronli

Signature

Amy Gronli

Printed Name

9/27/2022

Date

Labeling and Nutrition Coordinator

Title

800-328-1756 ext. 7118

Phone Number