




south dakota
DEPARTMENT OF EDUCATION

Learning. Leadership. Service.

Private Report Card
Navigation and Validation Guide
2022-2023
Updated July 2023

Private Report Card Access

There are two types of accountability permissions: school or district. Permissions are assigned by the district's STARS Account Manager. If STARS Account Managers have questions about SD-STARS accounts, login, or permissions, contact STARSHelp@state.sd.us.

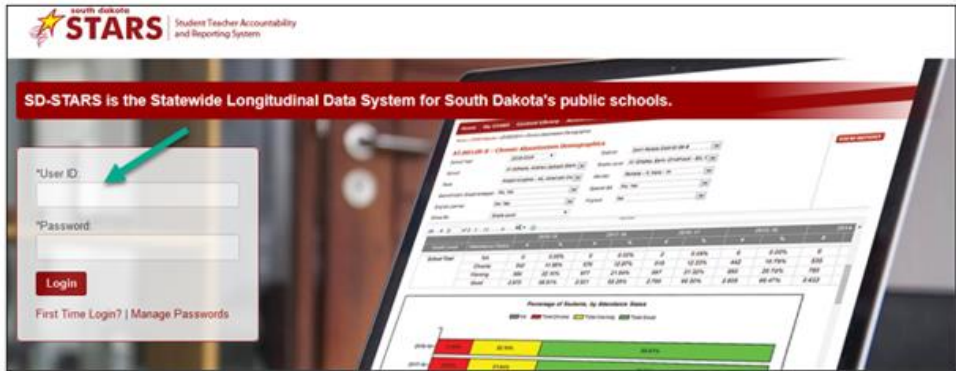


Log In Information

Website: <https://doestars.sd.gov>

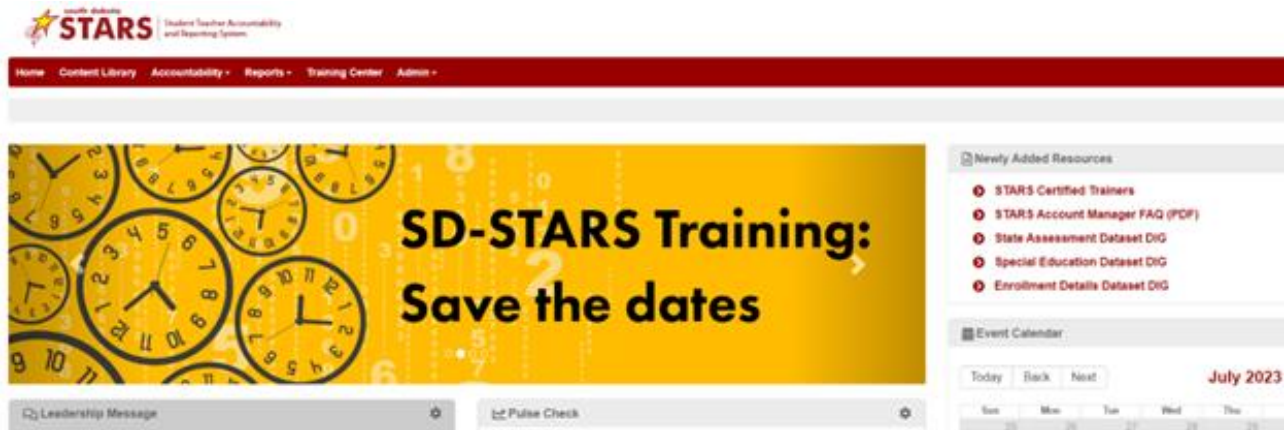
User ID: Your email address

Password: Users with @K12.sd.us email addresses will use the same password for emails and SD-STARS. Users without @K12.sd.us emails will use password set by them.

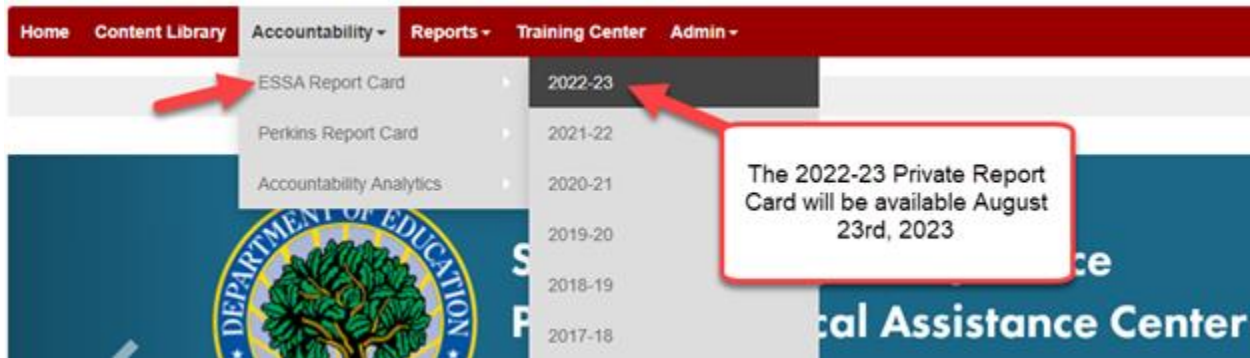


Navigating the system

Once a user is logged in, the system will go to the screen below. From this page, users can access the report cards, STARS reports, and other content.



To access State, District and School level private report cards, click on Accountability > ESSA Report Card. Select the appropriate year.



Once open, users are on what we call the Scorecard Page. From here, users can choose a variety of ways to access the data.

STATE OF SOUTH DAKOTA
2022-2023 Report Card

DISTRICT
All Districts

School	Student Performance	Student Progress	College and Career Readiness	High School Completion	English Learners Progress	School Environment	Overall Score
Aberdeen 06-1							
C.C. Lee Elementary - 05							
Central High School - 01							
Holgate Middle School - 02							
Lincoln Elementary - 08							
May Overby Elementary - 09							
Mike Miller Elementary - 07							
New Beginnings - 89							
O.M. Tiffany Elementary - 11							
Simmons Elementary - 10							
Simmons Middle School - 03							

Rating Key: N/A, 0 - 25%, 25 - 50%, 50 - 75%, 75 - 100% Points Possible

You should see all the schools in your district, depending on the level of permissions that are set by your district.

You should see just your district, depending on the level of permissions that are set by your district.

STATE OF SOUTH DAKOTA
2022-2023 Report Card

DISTRICT

School	Student Performance	Student Progress	College and Career Readiness	High School Completion	English Learners Progress	School Environment	Overall Score
Badlands District 99-9							
Dwight D. Eisenhower Elem-23							
Frederick Douglass HS-01							
Gerald Ford Elem-24							
Harry Truman Elem-22							
Herbert Hoover Elem-21							
Jimmy Carter Elem-25							
Sally Ride MS-11							
Wilma Rudolph MS-12							

Rating Key: N/A, 0 - 25%, 25 - 50%, 50 - 75%, 75 - 100% Points Possible

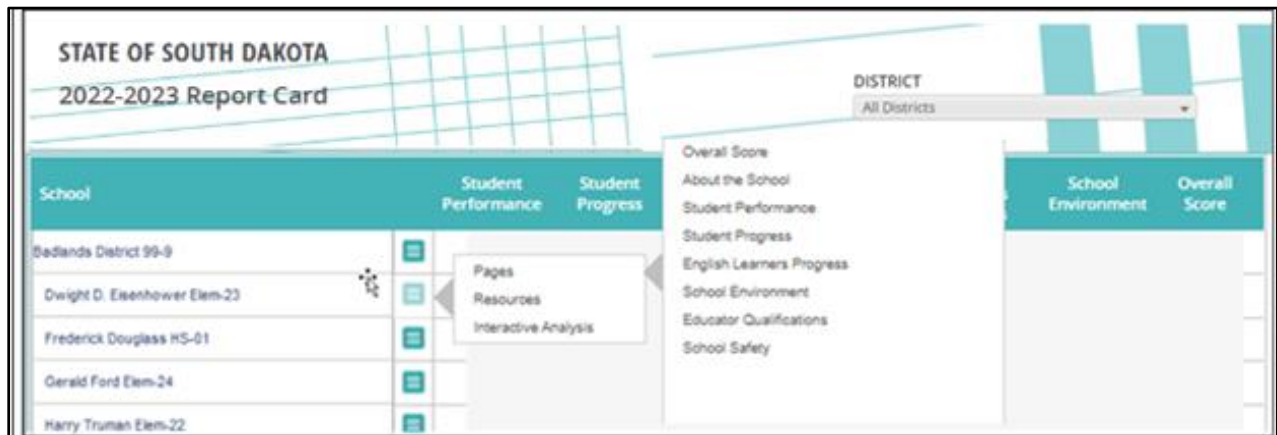
You can click on the district to see the district page, or the name of the school for the school page.

You can navigate to any report card page from this menu

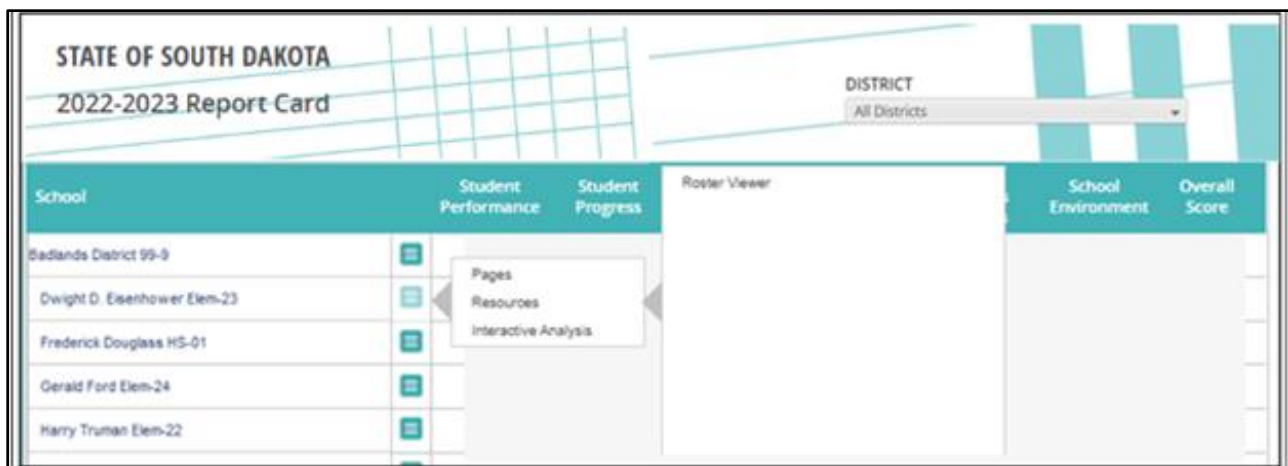
- Overall Score
- About the School
- Student Performance
- Student Progress
- English Learners Progress
- School Environment
- Educator Qualifications
- School Safety

Reports and pages can be accessed by clicking on the turquoise square icon. Below are screen shots of what can be accessed on each link. Note that navigation options may be slightly different among the district, high school, and elementary/middle school views. However, the general navigation is the same. (See the side-by-side graphics on Page 6 for more information.) Please contact the Accountability team if you have any issues navigating.

The “Pages” link allow access to navigate to each page of a school’s report card from this initial page.



The “Resources” link allows you to go directly to the rosters:



The “Interactive Analysis” link allows the user to navigate directly to an interactive analysis:

The screenshot displays the 'STATE OF SOUTH DAKOTA 2022-2023 Report Card' interface. At the top right, there is a 'DISTRICT' dropdown menu currently set to 'All Districts'. Below this is a table with columns for 'School', 'Student Performance', 'Student Progress', 'College and High School', 'English', 'School Environment', and 'Overall Score'. The table lists several schools, each with a menu icon to its right. A dropdown menu is open for the 'Frederick Douglass HS-01' row, showing options for 'Pages', 'Resources', and 'Interactive Analysis'. The 'Interactive Analysis' option is highlighted with a grey background.

School	Student Performance	Student Progress	College and High School	English	School Environment	Overall Score
Bedlands District 99-9			Student Performance: All Assessed			
Dwight D. Eisenhower Elem-23			Student Performance: English Learners			
Frederick Douglass HS-01			Student Performance: Full Academic Year			
Gerald Ford Elem-24			Student Performance: Students with Disabilities			
Harry Truman Elem-22			Student Progress			
Herbert Hoover Elem-21			School Environment			

Different views for Report Cards

Elementary and middle/junior high schools have different indicators displayed on the pages than the high schools report card pages. Report cards are available at the school, district, and state levels. On the next page a district and state report card are displayed (About the district/state page).

Dwight D. Eisenhower Elem-23
2022-2023 Report Card

DISTRICT: [Ballantyne District 99-9] SCHOOL: [Dwight D. Eisenhower Elem-23] [VIEW](#)

OVERALL SCORE | STUDENT PERFORMANCE | STUDENT PROGRESS | ENGLISH LEARNERS PROGRESS | EDUCATOR QUALIFICATIONS | SCHOOL ENVIRONMENT | SCHOOL SAFETY

HOW IS THE OVERALL SCORE MEASURED?
There are many factors that determine a school's performance. The overall score uses the school's performance in the following categories.

ACADEMICS

- 31 [OVERALL SCORE](#)
- Student Performance [VIEW DETAILS](#)
- Student Progress [VIEW DETAILS](#)
- English Learners Progress [VIEW DETAILS](#)

Navigate through sections using green buttons or pills above.

Frederick Douglass HS-01
2022-2023 Report Card

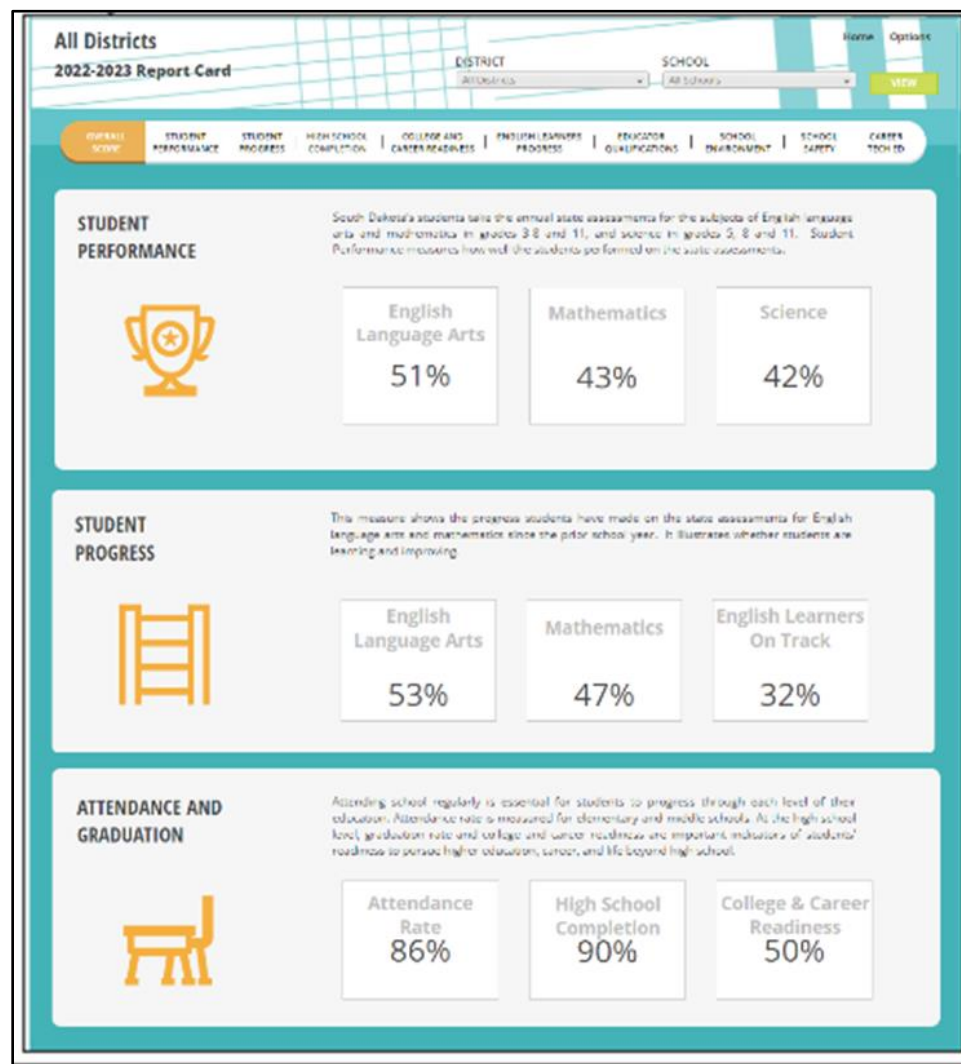
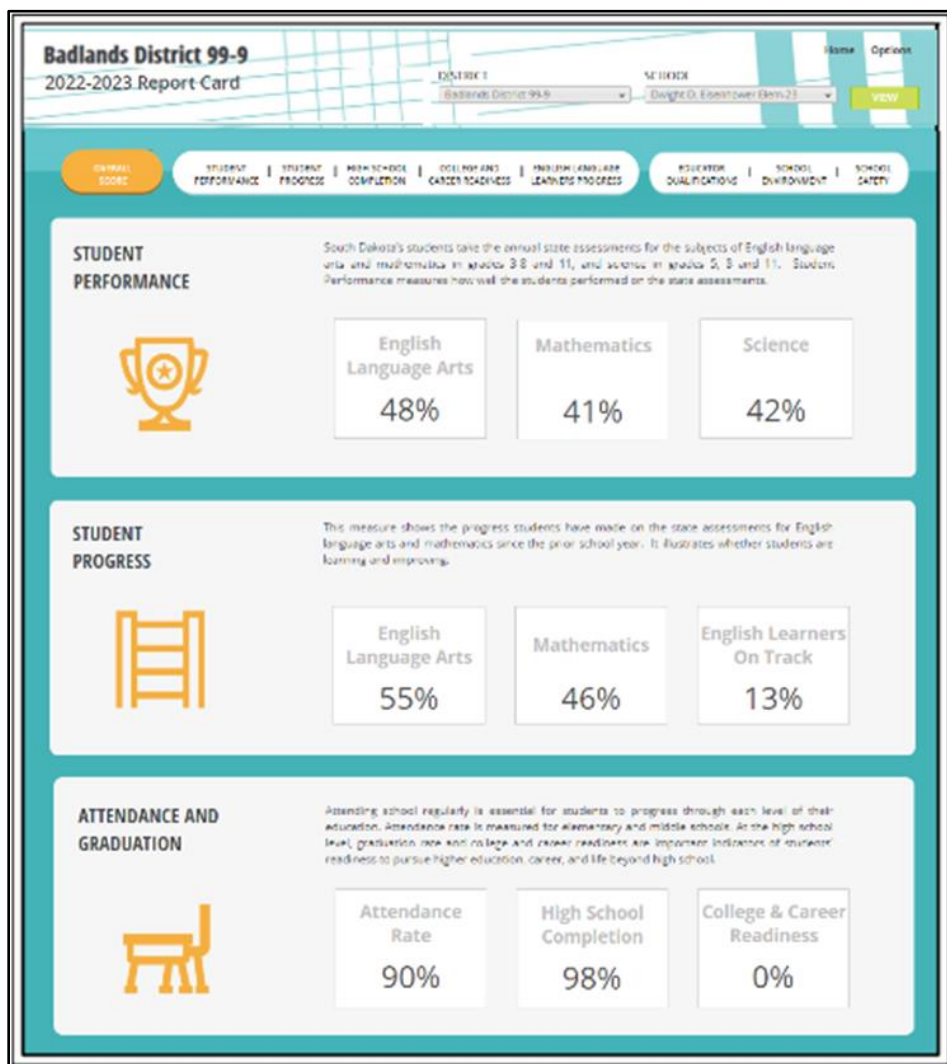
DISTRICT: [Ballantyne District 99-9] SCHOOL: [Frederick Douglass HS-01] [VIEW](#)

OVERALL SCORE | STUDENT PERFORMANCE | COLLEGE AND CAREER READINESS | HIGH SCHOOL COMPLETION | ENGLISH LANGUAGE LEARNERS PROGRESS | EDUCATOR QUALIFICATIONS | SCHOOL SAFETY

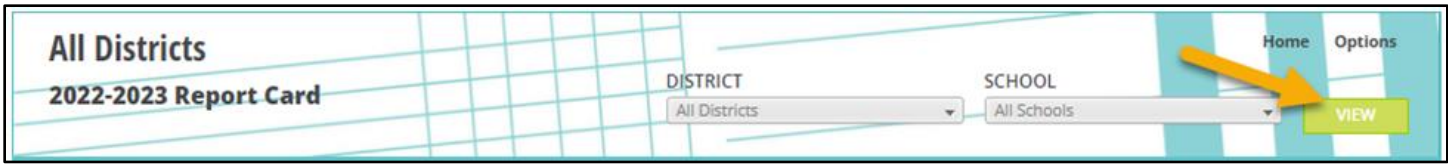
HOW IS THE OVERALL SCORE MEASURED?
There are many factors that determine a school's performance. The overall score uses the school's performance in the following categories.

ACADEMICS

- 31 [OVERALL SCORE](#)
- Student Performance [VIEW DETAILS](#)
- College and Career Readiness [VIEW DETAILS](#)
- High School Completion [VIEW DETAILS](#)
- English Language Learners Progress [VIEW DETAILS](#)

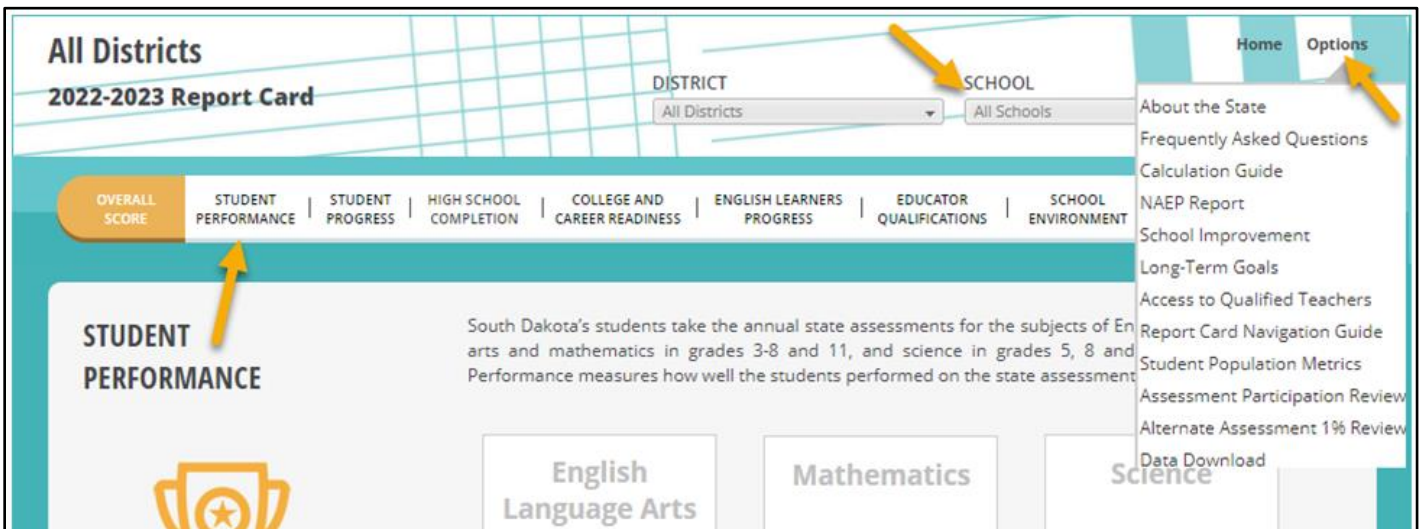


NOTE: When changing from one school to another, using the drop-down box “School”, remember to click View after changing to another school. This refreshes the data to your new selection.



Overall Score Page

The Overall Score Page is the navigation starting point into the report card. From this page, data can be accessed in a variety of ways including (1) drop down menus, (2) the Home or Options menus or (3) the individual white oval indicator links (also called “pills”). These ovals go from white to orange to indicate the page you are currently viewing.



Tools for Validation

Different reports can be found by clicking on View Details and Student Roster. All reports can be exported to Excel. For Student Performance, a drop-down menu allows you to change subjects and choose between participation and proficiency. Reminder: Science will not be available until January 2023.

PERFORMANCE BY STUDENT POPULATION

The information below shows how each population of students performed. It is broken down by group to show whether or not a school is serving all of its students well. When there are gaps for certain groups of students, schools will use that information to understand how they can better serve those groups to ensure that all students are performing at grade level.

[VIEW DETAILS](#)

[STUDENT ROSTER](#)

Proficiency
English Language Arts

Proficiency	51%	69703 Students
<hr style="border: 2px solid orange;"/>		
Female	56%	33929 Students
<hr style="border: 2px solid orange;"/>		
Male	47%	35774 Students
<hr style="border: 2px solid orange;"/>		

Clicking on View Details will take you into the Interactive Analysis Dashboard where you can filter by academic year, measure, subgroup, and comparison.

All Districts

2022-2023 Report Card

DISTRICT
SCHOOL

All Districts
All Schools
[VIEW](#)

OVERALL SCORE
STUDENT PERFORMANCE
STUDENT PROGRESS
HIGH SCHOOL COMPLETION
COLLEGE AND CAREER READINESS
ENGLISH LEARNERS PROGRESS
EDUCATOR QUALIFICATIONS
SCHOOL ENVIRONMENT
SCHOOL SAFETY
CAREER TECH ED

INTERACTIVE ANALYSIS

Interactive analysis enables you to quickly explore data by rows and columns using the filters across the top of the page. You can view data as a chart or table.

[VIEW SUMMARY](#)
[VIEW EXPANDED](#)

Chart
Table

Academic Year
Subject
Test Taken

2022-2023
English Language Arts
Regular and Alternate

Student Group
Grade Levels
Comparison

All Students: Performance
All
State Current Year

Student Performance (All Assessed) Chart

Table view provides the numbers behind the calculations. Be sure to select the year(s) you wish to examine.

View Summary navigates back to the main screen.

View Expanded opens a new tab with a wider view of the data.

Clicking the Student Roster button will open a roster dashboard with filtering & export features.

District	School	Student	Grade Level	Gender	Race Ethnicity	ED	EL	Former EL	Foster Care	Homeless	Long-Term EL	Migrant	Military Connects	SWD	SWD EL	Full Academic Year (FAY)
Total/Average/Mode				Male	White/Caucasian	25,784	3,903	727	542	533	1,353	233	1,056	10,865	601	70,756
Total/Average/Mode				Male	White/Caucasian	37	1	0	82	0	1	0	0	52	0	121
				Female	American Indian/Alaska Native	0	0	0	1	0	0	0	1	0	1	
				Female	White/Caucasian	0	0	0	0	0	0	0	1	0	1	
				Male	American Indian/Alaska Native	0	0	0	0	0	0	0	0	0	1	
				Female	American Indian/Alaska Native	0	0	0	0	0	0	0	0	0	1	
				Female	Asian	0	1	0	1	0	1	0	0	0	1	
				Female	American Indian/Alaska Native	0	0	0	0	0	0	0	0	0	1	
				Male	White/Caucasian	0	0	0	1	0	0	0	1	0	0	
				Female	American Indian/Alaska Native	0	0	0	1	0	0	0	0	0	1	
				Male	White/Caucasian	0	0	0	0	0	0	0	0	0	1	

After clicking Export, the following screen will appear:

Student Performance Roster Export

Export: Whole report

Export Header and Footer: Edit Custom Settings...

Excel with plain text
 CSV file format
 Excel with formatting
 HTML
 Plain text Delimiter: Comma

Export Report Title
 Export Page-By Information
 Export filter details
 Remove extra column: Automatic
 Expand all page-by fields

Excel options:
 Export metric values as text
 Export headers as text

Excel with formatting options:
 Place each page on a separate sheet

Select desired export settings and select Export

Export

Conclusion

There are many tools in the updated report card to aid districts in data reviews and decisions. Other resources that districts might find helpful may be accessed by going to the South Dakota Department of Education website.

Resources

DOE Website: <https://doe.sd.gov/>

SD-STARS: <https://doestars.sd.gov/>

Public Report Card: <https://sdschools.sd.gov/#>

DOE Accountability: <http://doe.sd.gov/reportcard/>