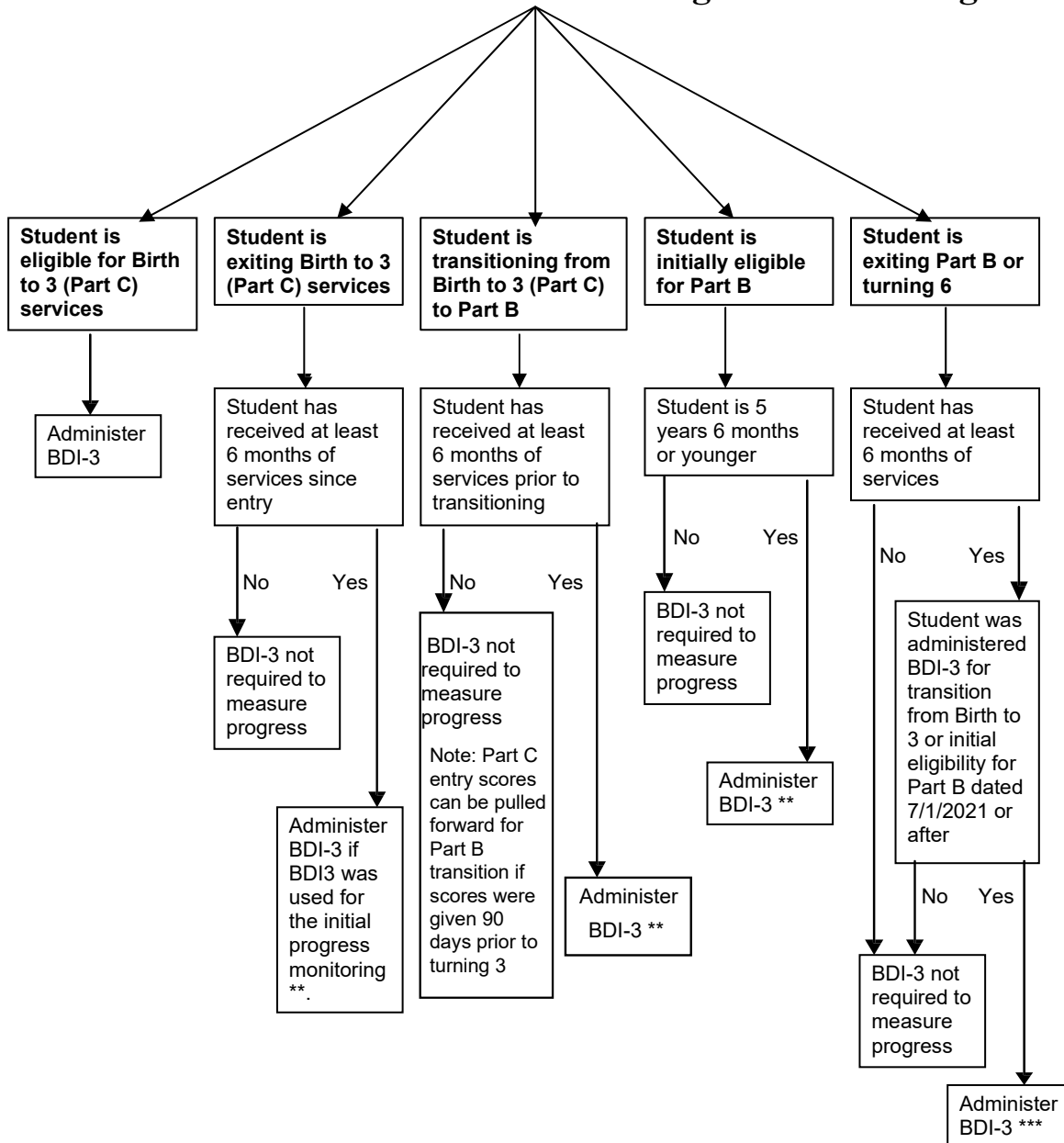


Administration of BDI-3 for Progress Monitoring*



*The BDI-3 is to be used with all initial evaluations beginning July 1, 2021. If the BDI-2 was used for progress monitoring into Part C or Part B, the BDI-2 must also be used for progress monitoring to exit or transition the program. If the student received an entry BDI2, both a BDI-2 exit, and BDI-3 entry evaluation will need to occur if the student turns 3 or turns 6 after December 31, 2024, which is when the BDI-2 will be phased out.

**BDI-3 should be completed as soon as possible after eligibility is determined.

***BDI-3 should be completed prior to turning 6 or prior to transition from Birth to 3 to Part B if the BDI-3 was used for the initial evaluation/progress monitoring.