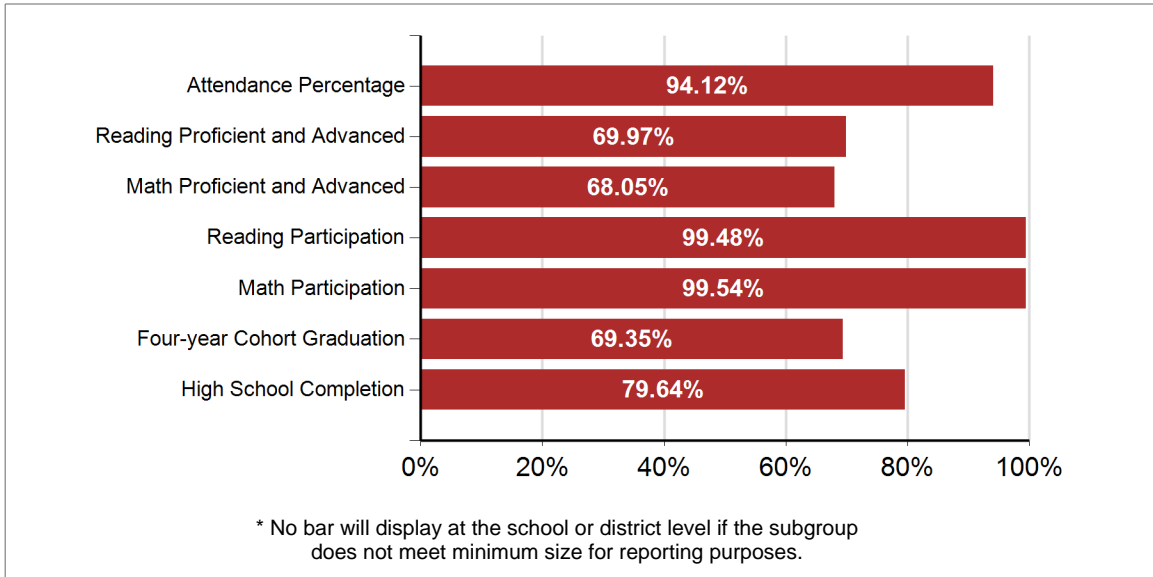
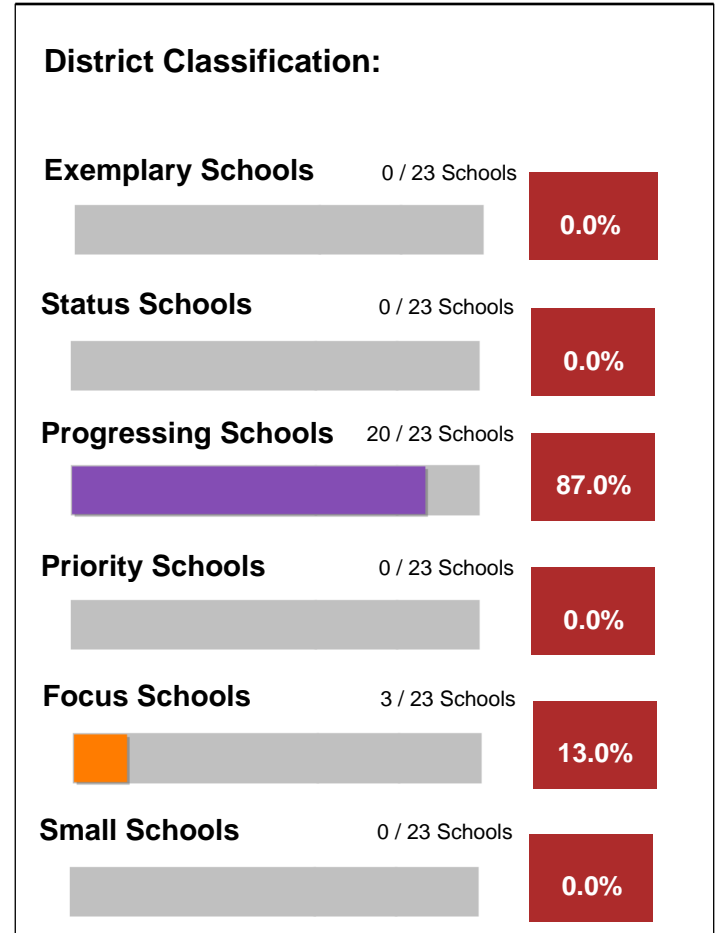


Rapid City Area 51-4

Performance Indicators



School Performance Index



Rapid City Area 51-4

Staffing

Core Classes Taught by Highly Qualified Teachers

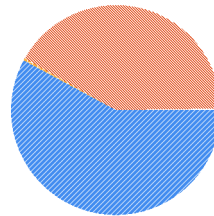
Number of Core Content Classes	3,512
Percent of Classes taught by Highly Qualified Teachers	99.74%
Percent of Classes not taught by Highly Qualified Teachers	0.26%
* Low Poverty	0.00%
* High Poverty	0.00%

It has been determined that South Dakota does not offer an Emergency or Provisional License. This information is therefore not being reported.

Administrators	41.88
School Service Specialists	117.49
Teachers	869.37
Average Years of Experience	14
Percent with Advanced Degrees	42.14%

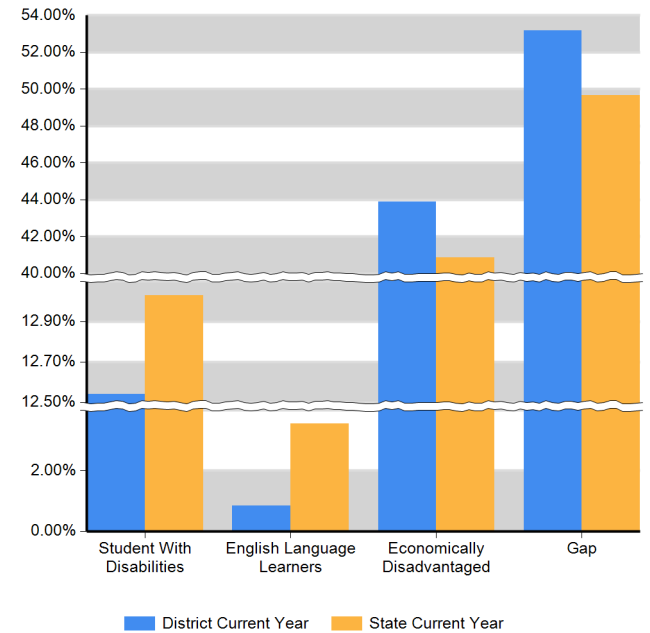
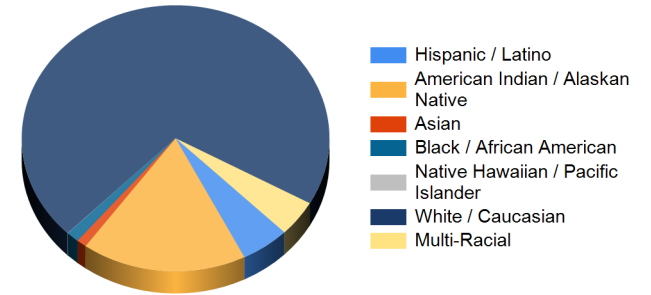
Degrees Earned

-  Bachelors
-  Doctorate
-  Masters
-  Specialist



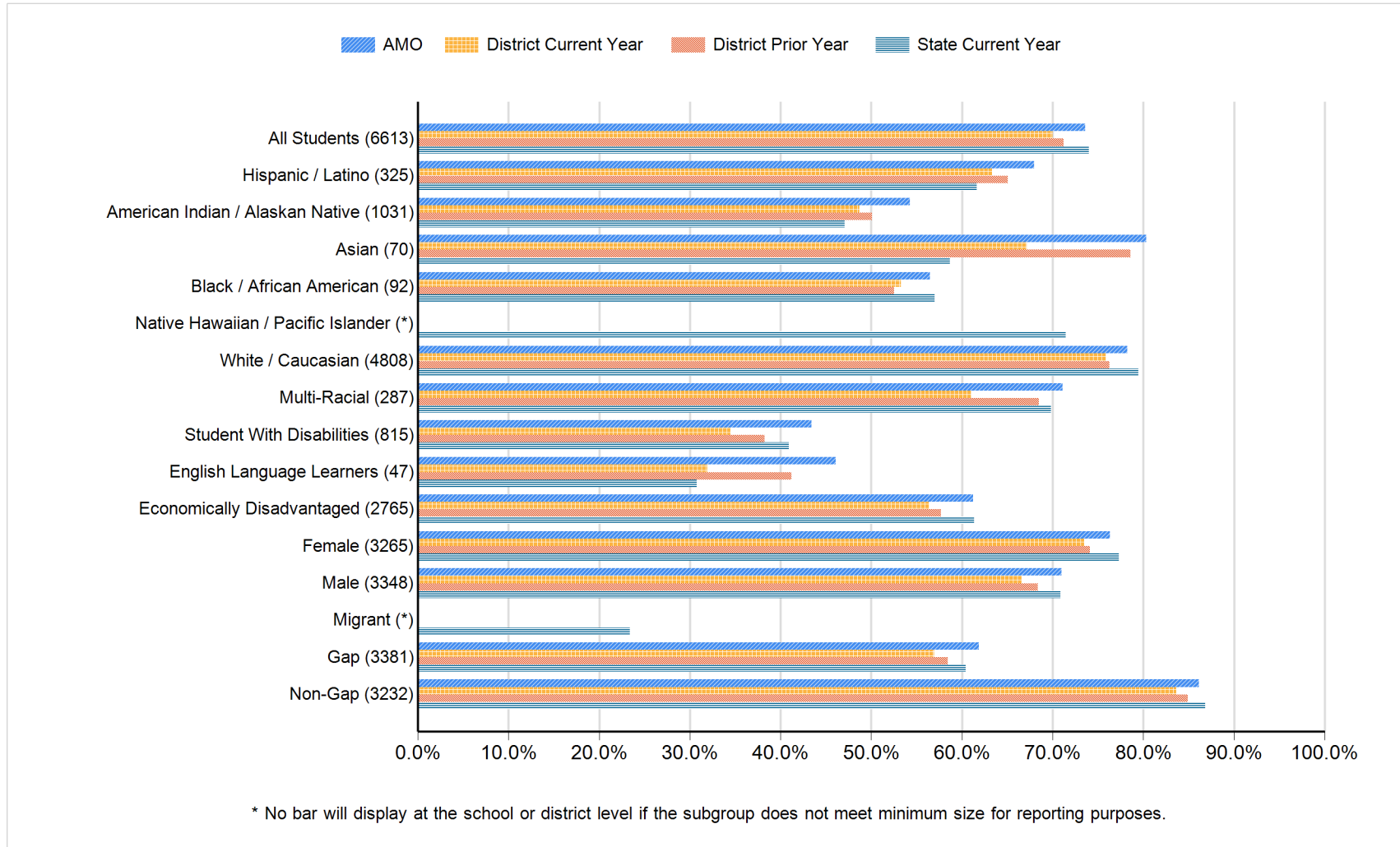
Student Population

**Race/Ethnicity
Percent of Tested Population**



Rapid City Area 51-4

Student Achievement: Reading Proficient and Advanced Percentage



Rapid City Area 51-4

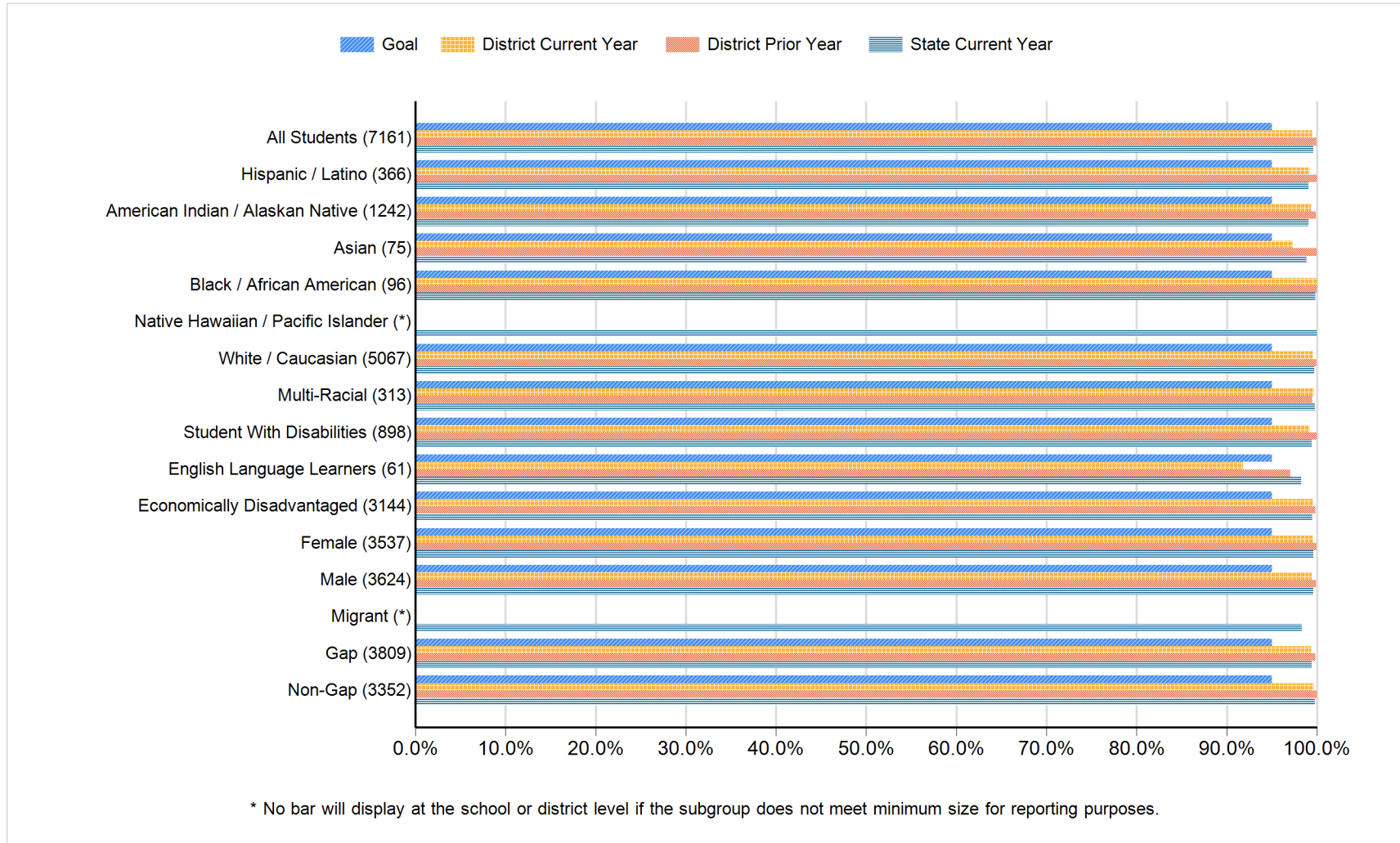
Student Achievement: Reading Proficient and Advanced Percentage - Data Matrix

Subgroup	Number of Students	AMO	District Current Year	District Prior Year	State Current Year
		Proficient and Advanced Percentage	Proficient and Advanced Percentage	Proficient and Advanced Percentage	Proficient and Advanced Percentage
All Students	6613	73.59	69.97	71.19	73.99
Hispanic / Latino	325	67.99	63.38	65.08	61.62
American Indian / Alaskan Native	1031	54.26	48.69	50.10	47.06
Asian	70	80.36	67.14	78.57	58.67
Black / African American	92	56.46	53.26	52.50	56.98
Native Hawaiian / Pacific Islander	*				71.43
White / Caucasian	4808	78.23	75.87	76.25	79.44
Multi-Racial	287	71.10	60.98	68.47	69.84
Student With Disabilities	815	43.41	34.48	38.27	40.89
English Language Learners	47	46.08	31.91	41.18	30.76
Economically Disadvantaged	2765	61.22	56.42	57.69	61.34
Female	3265	76.30	73.48	74.14	77.30
Male	3348	71.00	66.55	68.36	70.84
Migrant	*				23.38
Gap	3381	61.89	56.91	58.42	60.41
Non-Gap	3232	86.15	83.63	84.89	86.84

* No data will display at the school or district level if the subgroup does not meet minimum size for reporting purposes.

Rapid City Area 51-4

Student Achievement: Reading Participation Percentage



Rapid City Area 51-4

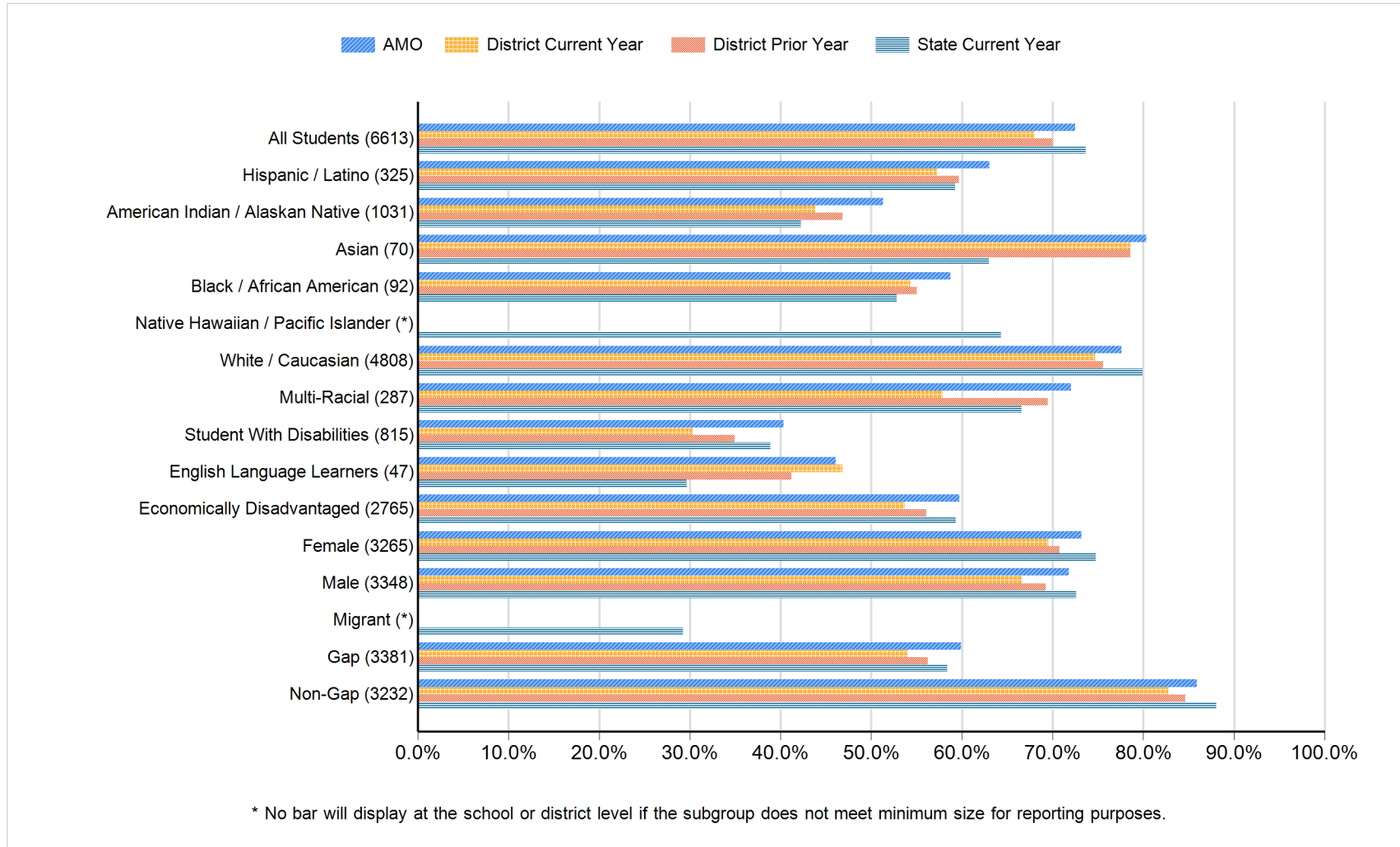
Student Achievement: Reading Participation Percentage - Data Matrix

Subgroup	Number of Students	Goal Participation Percentage	District Current Year Participation Percentage	District Prior Year Participation Percentage	State Current Year Participation Percentage
All Students	7161	95.00	99.48	99.92	99.59
Hispanic / Latino	366	95.00	99.18	100.00	99.06
American Indian / Alaskan Native	1242	95.00	99.36	99.90	99.09
Asian	75	95.00	97.33	100.00	98.85
Black / African American	96	95.00	100.00	100.00	99.82
Native Hawaiian / Pacific Islander	*				100.00
White / Caucasian	5067	95.00	99.55	99.94	99.70
Multi-Racial	313	95.00	99.68	99.51	99.76
Student With Disabilities	898	95.00	99.22	100.00	99.44
English Language Learners	61	95.00	91.80	97.06	98.26
Economically Disadvantaged	3144	95.00	99.55	99.85	99.49
Female	3537	95.00	99.52	99.94	99.61
Male	3624	95.00	99.45	99.91	99.57
Migrant	*				98.30
Gap	3809	95.00	99.34	99.85	99.42
Non-Gap	3352	95.00	99.64	100.00	99.76

* No data will display at the school or district level if the subgroup does not meet minimum size for reporting purposes.

Rapid City Area 51-4

Student Achievement: Math Proficient and Advanced Percentage



Rapid City Area 51-4

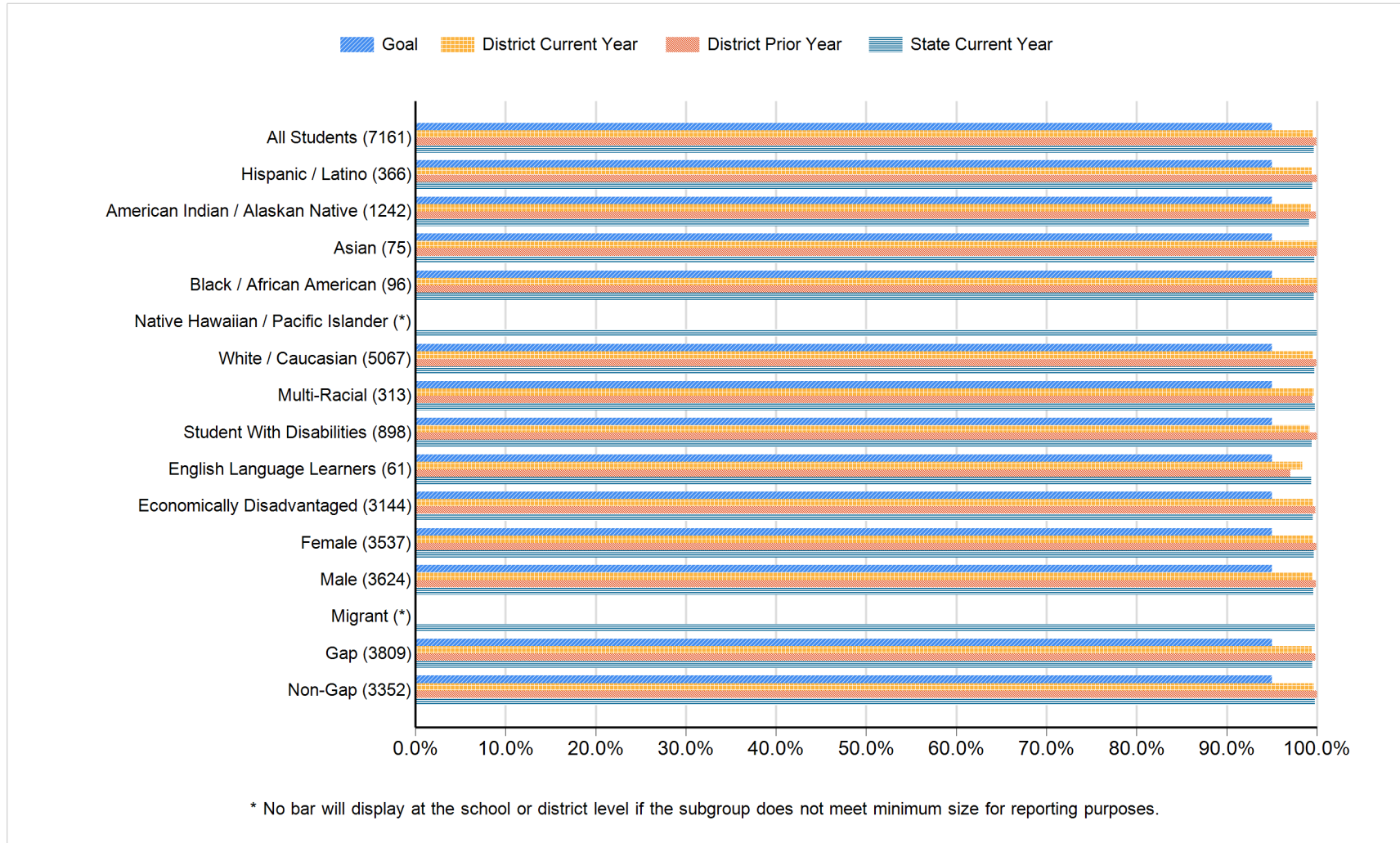
Student Achievement: Math Proficient and Advanced Percentage - Data Matrix

Subgroup	Number of Students	AMO	District Current Year	District Prior Year	State Current Year
		Proficient and Advanced Percentage	Proficient and Advanced Percentage	Proficient and Advanced Percentage	Proficient and Advanced Percentage
All Students	6613	72.47	68.05	69.97	73.64
Hispanic / Latino	325	63.02	57.23	59.66	59.28
American Indian / Alaskan Native	1031	51.28	43.84	46.85	42.26
Asian	70	80.36	78.57	78.57	62.96
Black / African American	92	58.75	54.35	55.00	52.79
Native Hawaiian / Pacific Islander	*				64.29
White / Caucasian	4808	77.58	74.69	75.54	79.94
Multi-Racial	287	72.01	57.84	69.46	66.58
Student With Disabilities	815	40.34	30.31	34.92	38.86
English Language Learners	47	46.08	46.81	41.18	29.65
Economically Disadvantaged	2765	59.74	53.71	56.08	59.29
Female	3265	73.18	69.53	70.74	74.73
Male	3348	71.79	66.61	69.23	72.60
Migrant	*				29.23
Gap	3381	59.87	53.98	56.22	58.40
Non-Gap	3232	85.91	82.77	84.63	88.07

* No data will display at the school or district level if the subgroup does not meet minimum size for reporting purposes.

Rapid City Area 51-4

Student Achievement: Math Participation Percentage



Rapid City Area 51-4

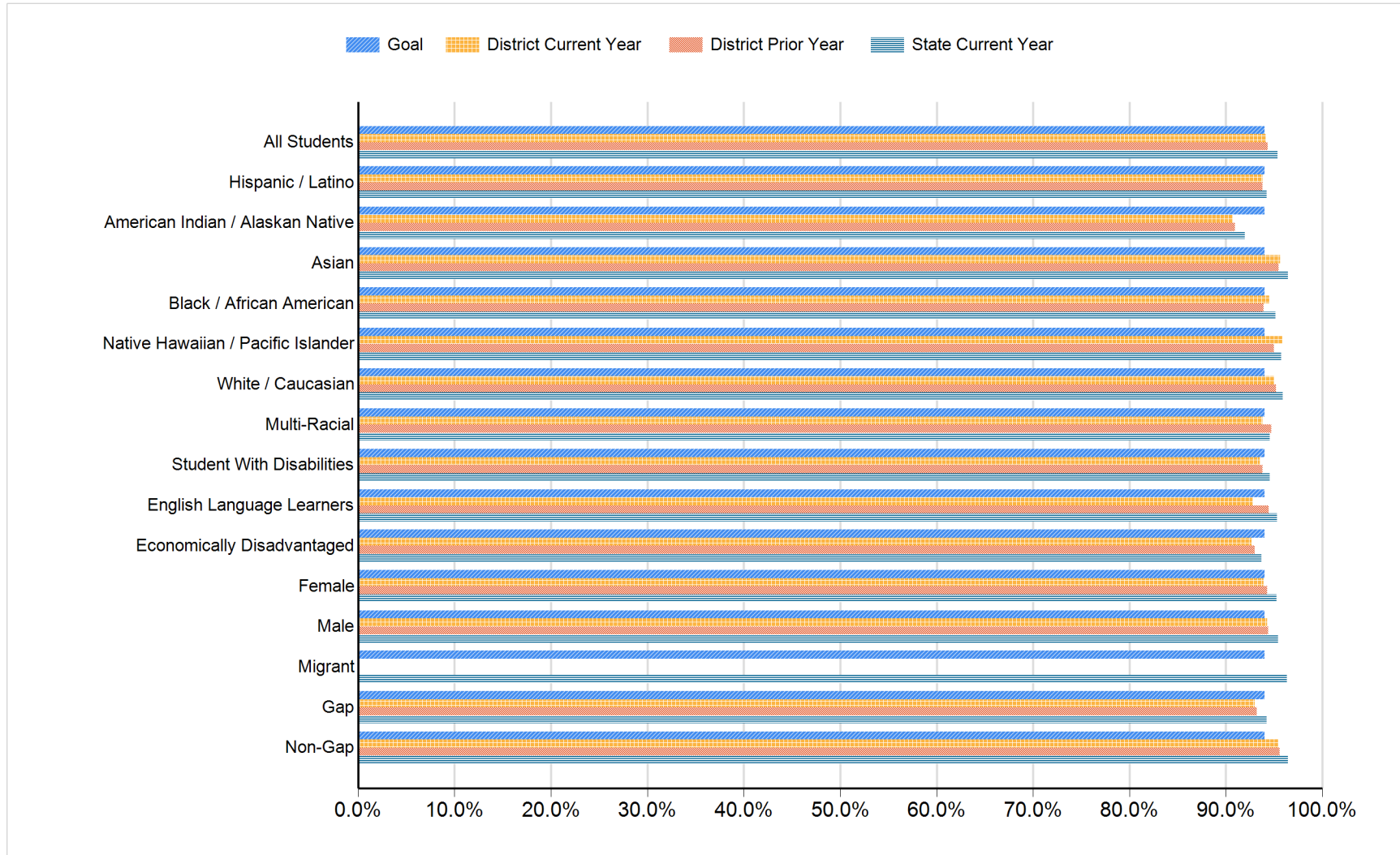
Student Achievement: Math Participation Percentage - Data Matrix

Subgroup	Number of Students	Goal Participation Percentage	District Current Year Participation Percentage	District Prior Year Participation Percentage	State Current Year Participation Percentage
All Students	7161	95.00	99.54	99.92	99.63
Hispanic / Latino	366	95.00	99.45	100.00	99.49
American Indian / Alaskan Native	1242	95.00	99.28	99.90	99.11
Asian	75	95.00	100.00	100.00	99.73
Black / African American	96	95.00	100.00	100.00	99.65
Native Hawaiian / Pacific Islander	*				100.00
White / Caucasian	5067	95.00	99.59	99.94	99.72
Multi-Racial	313	95.00	99.68	99.51	99.76
Student With Disabilities	898	95.00	99.22	100.00	99.43
English Language Learners	61	95.00	98.36	97.06	99.36
Economically Disadvantaged	3144	95.00	99.52	99.85	99.55
Female	3537	95.00	99.58	99.94	99.65
Male	3624	95.00	99.50	99.91	99.62
Migrant	*				99.76
Gap	3809	95.00	99.42	99.85	99.51
Non-Gap	3352	95.00	99.67	100.00	99.76

* No data will display at the school or district level if the subgroup does not meet minimum size for reporting purposes.

Rapid City Area 51-4

Attendance



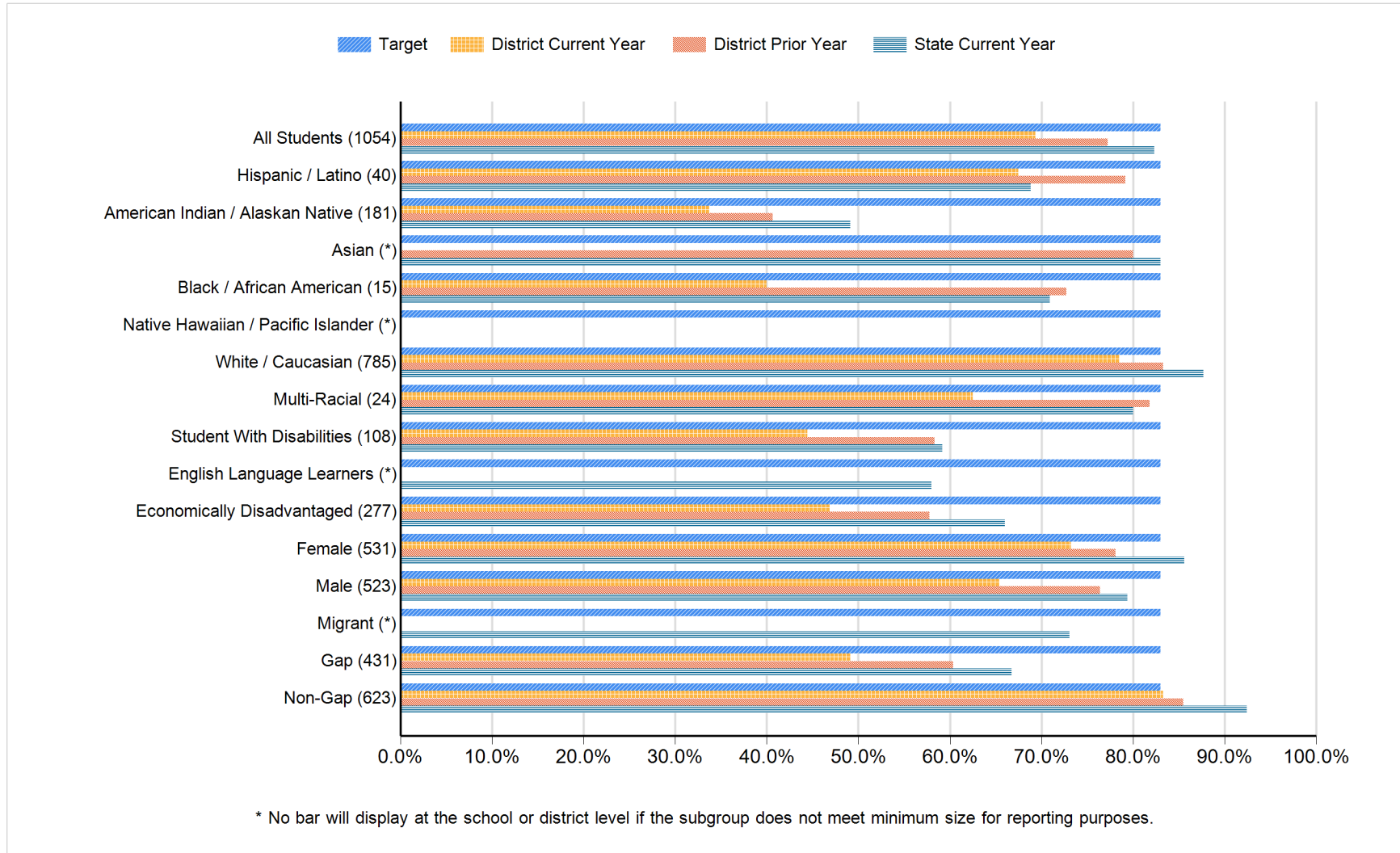
Rapid City Area 51-4

Attendance: Data Matrix

Subgroup	Goal	District Current Year	District Prior Year	State Current Year
	Attendance Percentage	Attendance Percentage	Attendance Percentage	Attendance Percentage
All Students	94.00	94.12	94.34	95.35
Hispanic / Latino	94.00	93.78	93.83	94.24
American Indian / Alaskan Native	94.00	90.69	90.93	91.95
Asian	94.00	95.62	95.48	96.44
Black / African American	94.00	94.48	93.89	95.17
Native Hawaiian / Pacific Islander	94.00	95.85	94.98	95.75
White / Caucasian	94.00	95.02	95.22	95.93
Multi-Racial	94.00	93.80	94.70	94.58
Student With Disabilities	94.00	93.53	93.79	94.55
English Language Learners	94.00	92.80	94.46	95.29
Economically Disadvantaged	94.00	92.69	93.00	93.69
Female	94.00	93.93	94.27	95.26
Male	94.00	94.31	94.41	95.43
Migrant	94.00	0.00	0.00	96.32
Gap	94.00	93.01	93.22	94.21
Non-Gap	94.00	95.47	95.59	96.43

Rapid City Area 51-4

Four-year Cohort Graduation



Rapid City Area 51-4

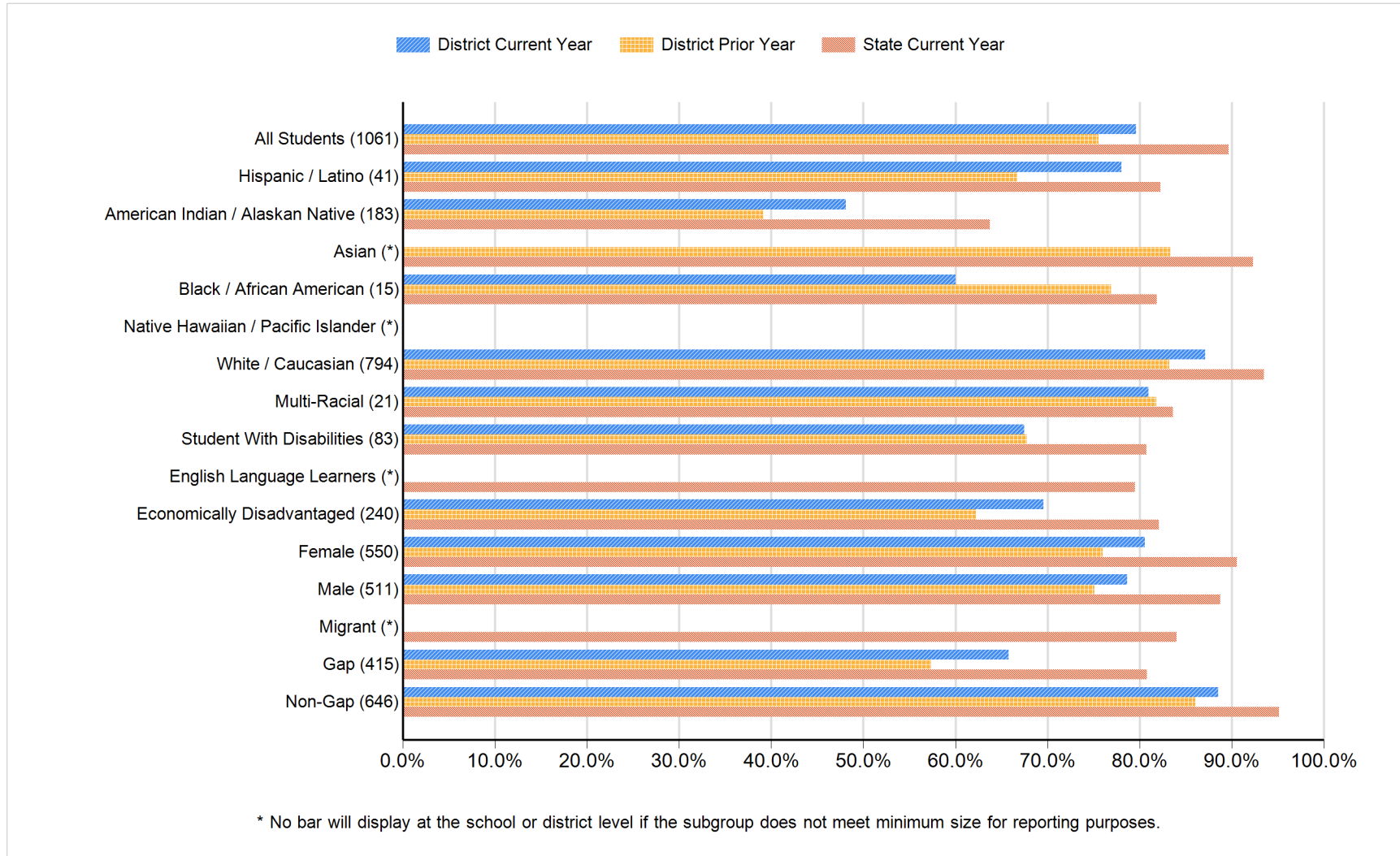
Four-year Cohort Graduation: Data Matrix

Subgroup	Number of Students	Target	District Current Year	District Prior Year	State Current Year
		Four-year Cohort Graduation Percentage	Four-year Cohort Graduation Percentage	Four-year Cohort Graduation Percentage	Four-year Cohort Graduation Percentage
All Students	1054	83.00	69.35	77.22	82.34
Hispanic / Latino	40	83.00	67.50	79.17	68.81
American Indian / Alaskan Native	181	83.00	33.70	40.68	49.11
Asian	*	83.00		80.00	83.01
Black / African American	15	83.00	40.00	72.73	70.92
Native Hawaiian / Pacific Islander	*	83.00			
White / Caucasian	785	83.00	78.47	83.26	87.69
Multi-Racial	24	83.00	62.50	81.82	80.00
Student With Disabilities	108	83.00	44.44	58.33	59.17
English Language Learners	*	83.00			58.01
Economically Disadvantaged	277	83.00	46.93	57.79	66.02
Female	531	83.00	73.26	78.10	85.59
Male	523	83.00	65.39	76.42	79.37
Migrant	*	83.00			73.08
Gap	431	83.00	49.19	60.35	66.76
Non-Gap	623	83.00	83.31	85.47	92.41

* No data will display at the school or district level if the subgroup does not meet minimum size for reporting purposes.

Rapid City Area 51-4

High School Completion



Rapid City Area 51-4

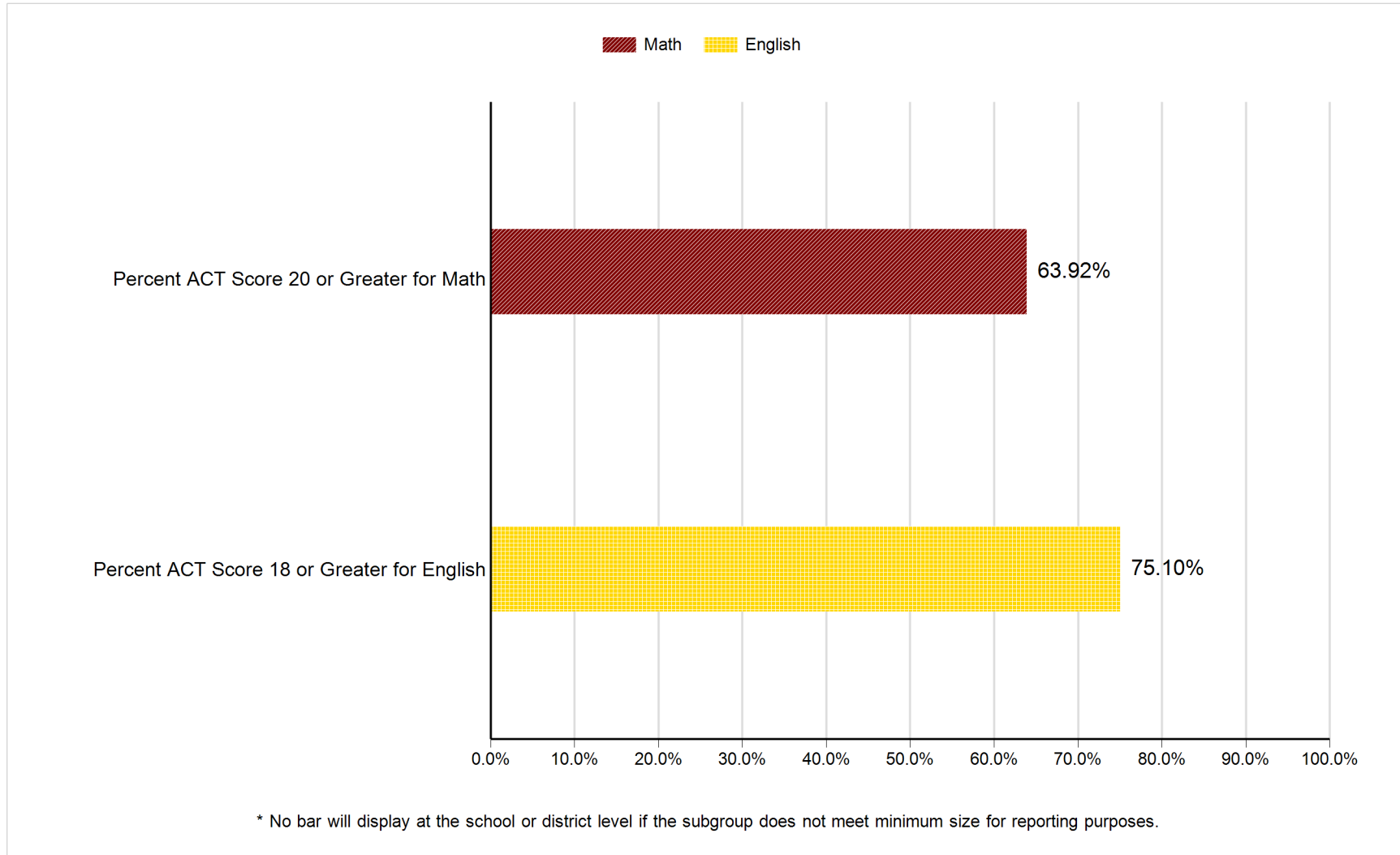
High School Completion: Data Matrix

Subgroup	Number of Students	District Current Year	District Prior Year	State Current Year
		High School Completion Percentage	High School Completion Percentage	High School Completion Percentage
All Students	1061	79.64	75.53	89.68
Hispanic / Latino	41	78.05	66.67	82.25
American Indian / Alaskan Native	183	48.09	39.13	63.74
Asian	*		83.33	92.31
Black / African American	15	60.00	76.92	81.85
Native Hawaiian / Pacific Islander	*			
White / Caucasian	794	87.15	83.25	93.51
Multi-Racial	21	80.95	81.82	83.65
Student With Disabilities	83	67.47	67.74	80.73
English Language Learners	*			79.51
Economically Disadvantaged	240	69.58	62.22	82.09
Female	550	80.55	76.01	90.59
Male	511	78.67	75.10	88.78
Migrant	*			84.00
Gap	415	65.78	57.38	80.80
Non-Gap	646	88.54	86.05	95.16

* No data will display at the school or district level if the subgroup does not meet minimum size for reporting purposes.

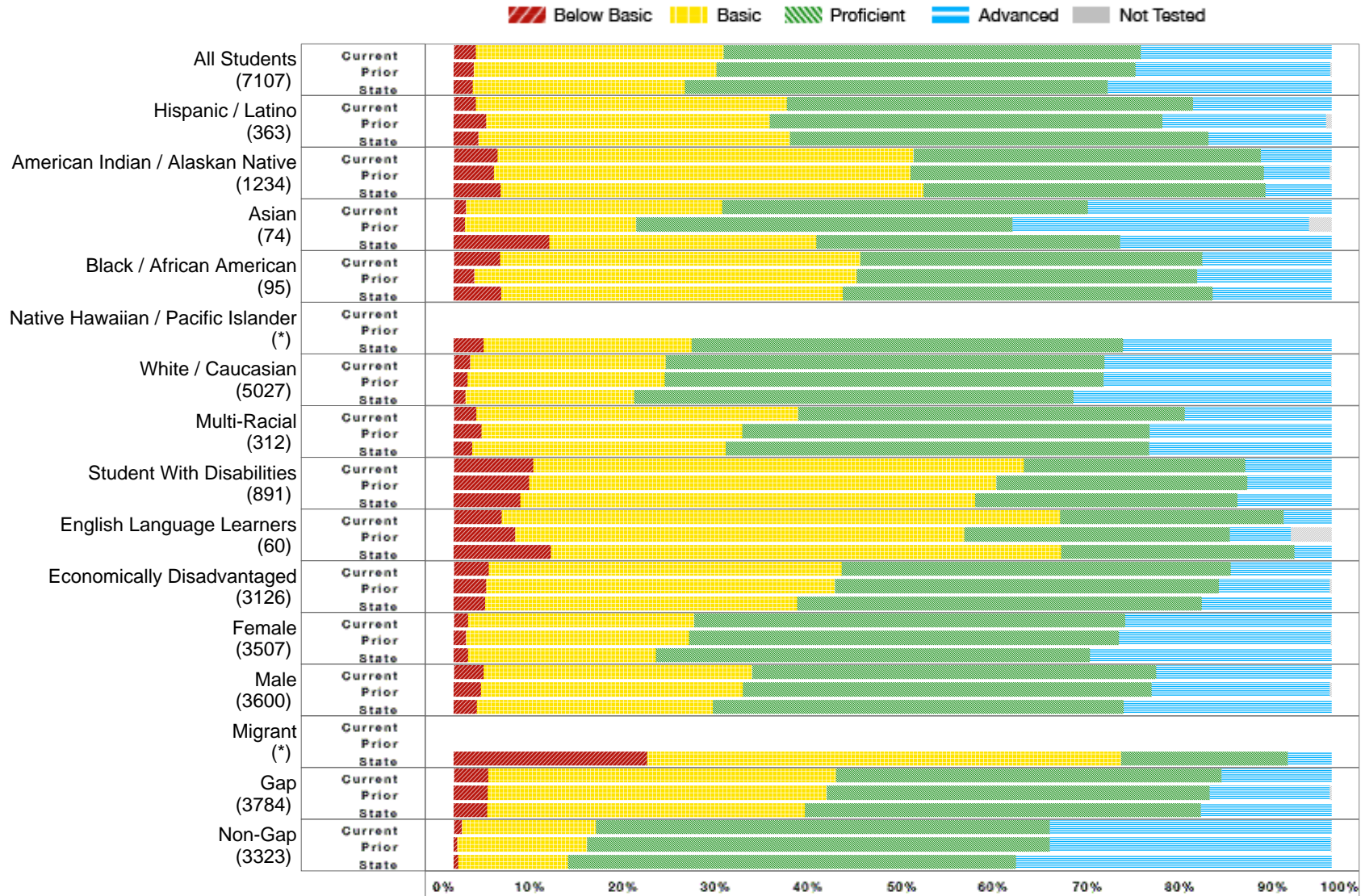
Rapid City Area 51-4

College and Career Readiness



Rapid City Area 51-4

All Assessed: Reading All Grades



* No bar will display at the school or district level if the subgroup does not meet minimum size for reporting purposes.

Rapid City Area 51-4

All Assessed: Reading All Grades - Data Matrix

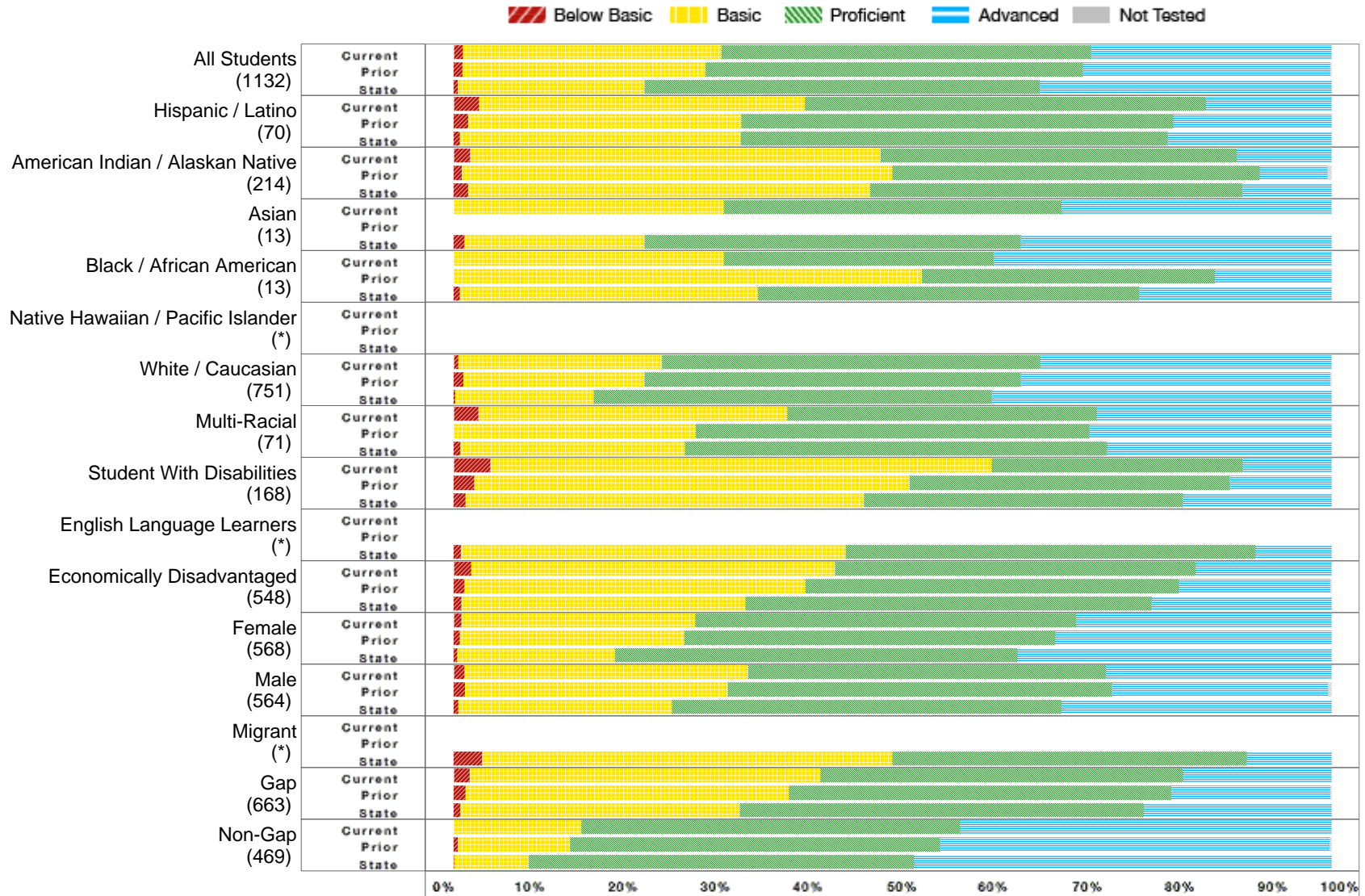
	District Current Year						District Prior Year					State Current Year				
	Number Students	Percent B. Bas.	Percent Bas.	Percent Prof.	Percent Adv.	Percent N.T.	Percent B. Bas.	Percent Bas.	Percent Prof.	Percent Adv.	Percent N.T.	Percent B. Bas.	Percent Bas.	Percent Prof.	Percent Adv.	Percent N.T.
All Students	7107	2.53	28.23	47.53	21.71	0.51	2.27	27.64	47.76	22.18	0.36	2.15	24.21	48.12	25.53	0.51
Hispanic / Latino	363	2.49	35.46	46.26	15.79	0.55	3.73	32.30	44.72	18.63	0.62	2.79	35.52	47.67	14.02	1.06
American Indian / Alaskan Native	1234	4.98	47.39	39.56	8.08	0.65	4.60	47.41	40.30	7.44	0.91	5.36	48.17	38.93	7.54	0.86
Asian	74	1.39	29.17	41.67	27.78	2.70	1.30	19.48	42.86	33.77	2.60	10.90	30.40	34.61	24.09	6.19
Black / African American	95	5.26	41.05	38.95	14.74	0.00	2.35	43.53	38.82	15.29	0.00	5.42	38.89	42.12	13.57	1.68
Native Hawaiian / Pacific Islander	*											3.39	23.73	49.15	23.73	0.00
White / Caucasian	5027	1.90	22.24	50.02	25.84	0.46	1.60	22.42	50.01	25.91	0.18	1.34	19.24	50.02	29.40	0.27
Multi-Racial	312	2.57	36.66	44.05	16.72	0.32	3.15	29.73	46.40	20.72	0.45	2.10	28.88	48.22	20.79	0.24
Student With Disabilities	891	9.05	55.88	25.23	9.84	0.79	8.56	53.27	28.59	9.57	0.00	7.60	51.80	29.91	10.69	0.49
English Language Learners	60	5.45	63.64	25.45	5.45	8.33	6.98	51.16	30.23	6.98	6.82	11.10	58.11	26.54	4.26	5.44
Economically Disadvantaged	3126	3.98	40.22	44.33	11.47	0.42	3.67	39.74	43.75	12.64	0.53	3.61	35.53	46.07	14.79	0.79
Female	3507	1.66	25.75	49.10	23.49	0.46	1.41	25.38	48.98	24.15	0.35	1.62	21.42	49.47	27.50	0.50
Male	3600	3.38	30.64	46.01	19.97	0.56	3.11	29.82	46.60	20.28	0.37	2.65	26.86	46.83	23.66	0.52
Migrant	*											22.01	54.04	18.94	5.01	12.01
Gap	3784	3.96	39.60	43.91	12.53	0.63	3.87	38.61	43.61	13.69	0.51	3.80	36.18	45.12	14.90	0.80
Non-Gap	3323	0.91	15.31	51.65	32.14	0.36	0.40	14.77	52.71	32.03	0.16	0.53	12.50	51.05	35.92	0.23

B. Bas = Below Basic, Bas. = Basic, Prof. = Proficient, Adv. = Advanced, N.T. = Not Test

* No data will display at the school or district level if the subgroup does not meet minimum size for reporting purposes.

Rapid City Area 51-4

All Assessed: Reading Grade 03



* No bar will display at the school or district level if the subgroup does not meet minimum size for reporting purposes.

Rapid City Area 51-4

All Assessed: Reading Grade 03 - Data Matrix

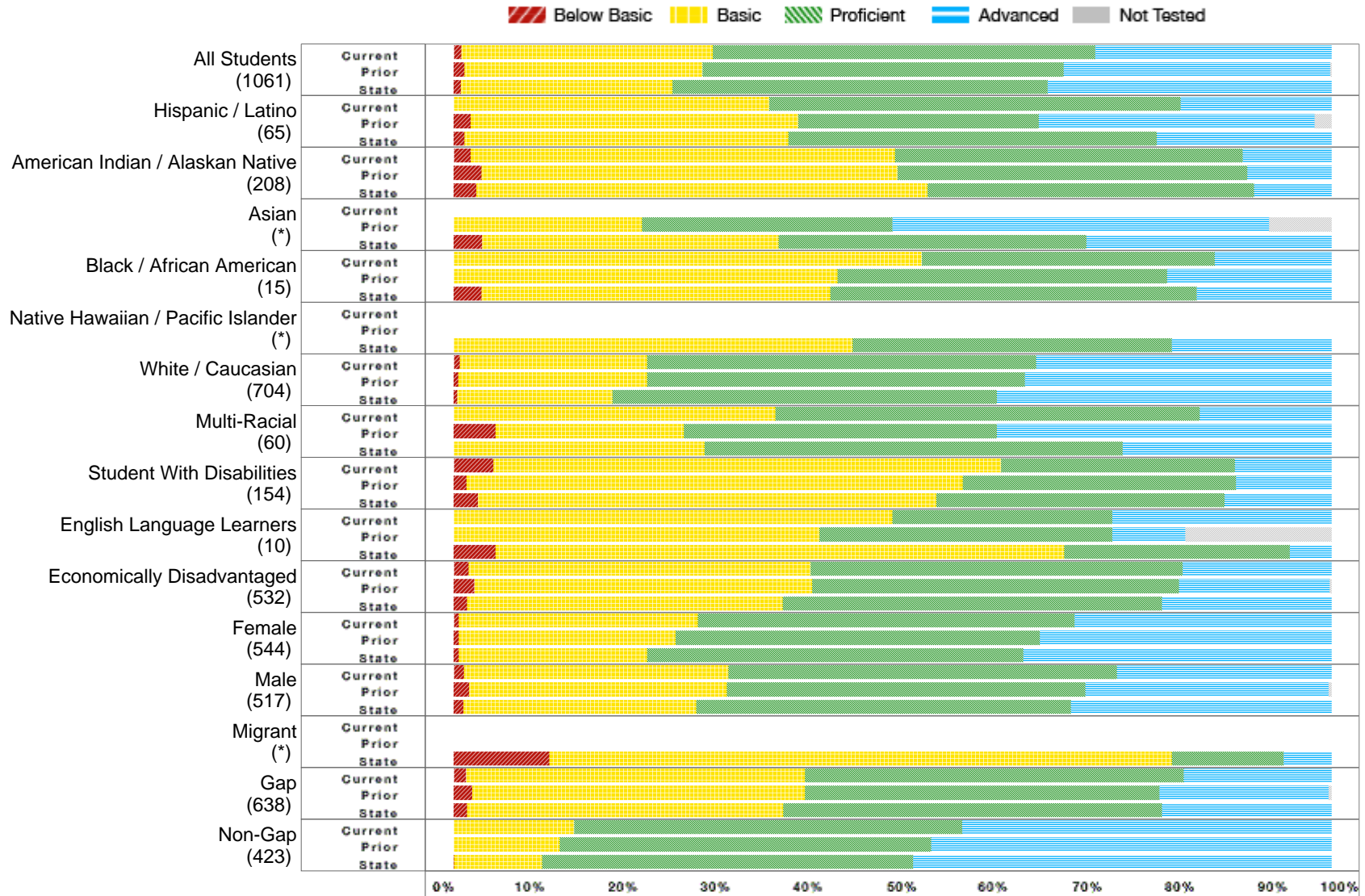
	District Current Year						District Prior Year					State Current Year				
	Number Students	Percent B. Bas	Percent Bas.	Percent Prof.	Percent Adv.	Percent N.T.	Percent B. Bas	Percent Bas.	Percent Prof.	Percent Adv.	Percent N.T.	Percent B. Bas	Percent Bas.	Percent Prof.	Percent Adv.	Percent N.T.
All Students	1132	1.06	29.44	42.09	27.41	0.09	1.01	27.70	42.96	28.15	0.36	0.45	21.27	45.08	33.21	0.24
Hispanic / Latino	70	2.86	37.14	45.71	14.29	0.00	1.64	31.15	49.18	18.03	0.00	0.69	32.03	48.62	18.66	0.23
American Indian / Alaskan Native	214	1.87	46.73	40.65	10.75	0.00	0.91	49.09	41.82	7.73	1.35	1.63	45.80	42.38	10.19	0.31
Asian	13	0.00	30.77	38.46	30.77	0.00						1.24	20.50	42.86	35.40	3.59
Black / African American	13	0.00	30.77	30.77	38.46	0.00	0.00	53.33	33.33	13.33	0.00	0.71	33.92	43.46	21.91	1.39
Native Hawaiian / Pacific Islander	*															
White / Caucasian	751	0.53	23.20	43.07	33.20	0.13	1.09	20.63	42.90	35.25	0.14	0.19	15.78	45.35	38.69	0.12
Multi-Racial	71	2.82	35.21	35.21	26.76	0.00	0.00	27.59	44.83	27.59	0.00	0.78	25.58	48.06	25.58	0.00
Student With Disabilities	168	4.17	57.14	28.57	10.12	0.00	2.33	49.61	36.43	11.63	0.00	1.34	45.38	36.31	16.97	0.18
English Language Learners	*											0.82	43.83	46.71	8.64	2.21
Economically Disadvantaged	548	2.01	41.42	41.06	15.51	0.00	1.25	38.82	42.58	17.17	0.53	0.89	32.36	46.23	20.51	0.32
Female	568	0.88	26.63	43.39	29.10	0.18	0.72	25.58	42.22	31.48	0.36	0.39	18.01	45.80	35.79	0.19
Male	564	1.24	32.27	40.78	25.71	0.00	1.31	29.91	43.74	24.67	0.37	0.49	24.38	44.39	30.74	0.30
Migrant	*											3.23	46.77	40.32	9.68	8.82
Gap	663	1.81	39.97	41.33	16.89	0.00	1.34	36.85	43.54	18.13	0.44	0.78	31.80	46.03	21.39	0.31
Non-Gap	469	0.00	14.53	43.16	42.31	0.21	0.48	12.77	42.17	44.34	0.24	0.04	8.46	43.92	47.58	0.16

B. Bas = Below Basic, Bas. = Basic, Prof. = Proficient, Adv. = Advanced, N.T. = Not Test

* No data will display at the school or district level if the subgroup does not meet minimum size for reporting purposes.

Rapid City Area 51-4

All Assessed: Reading Grade 04



* No bar will display at the school or district level if the subgroup does not meet minimum size for reporting purposes.

Rapid City Area 51-4

All Assessed: Reading Grade 04 - Data Matrix

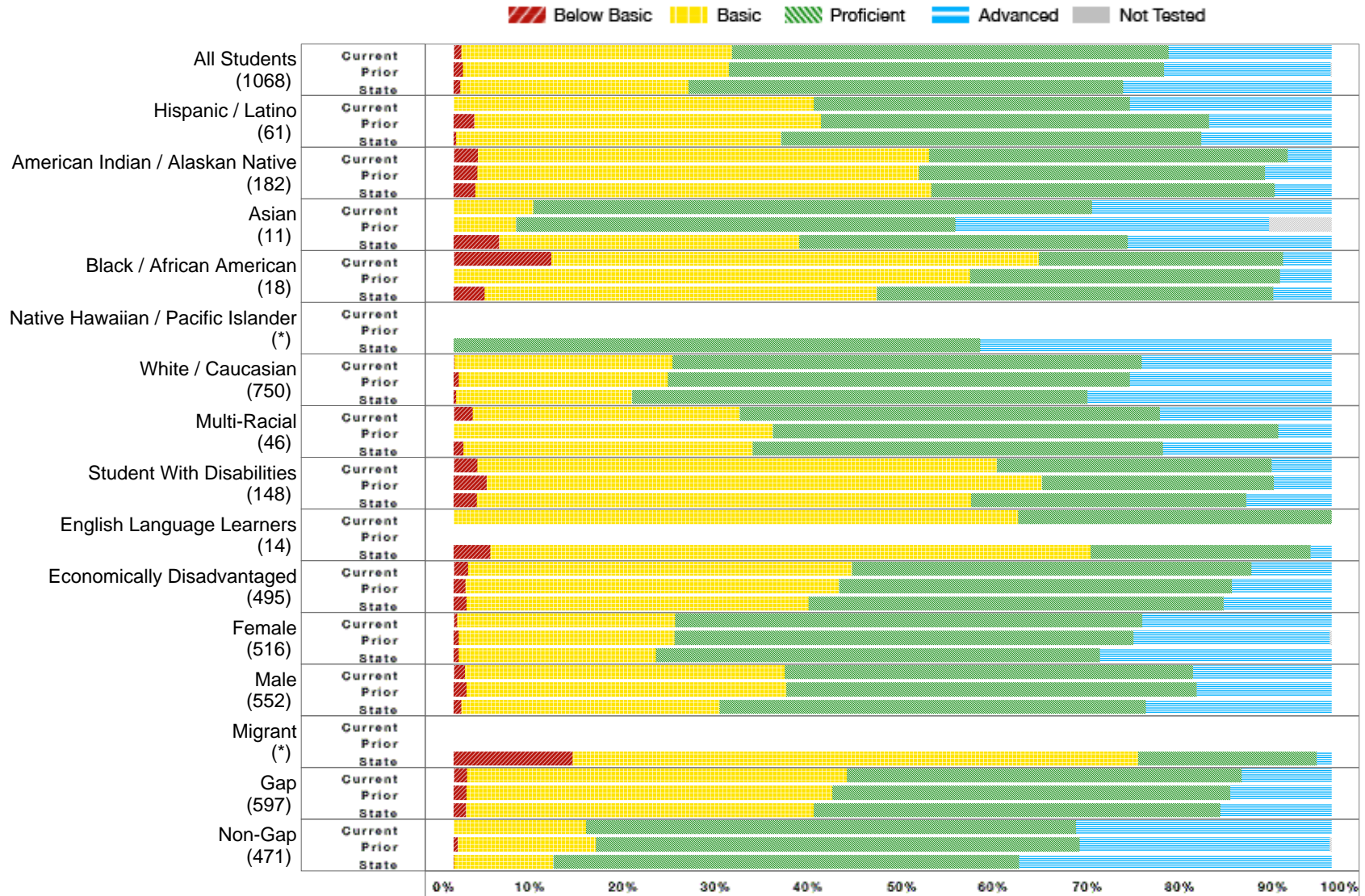
	District Current Year						District Prior Year					State Current Year				
	Number Students	Percent B. Bas	Percent Bas.	Percent Prof.	Percent Adv.	Percent N.T.	Percent B. Bas	Percent Bas.	Percent Prof.	Percent Adv.	Percent N.T.	Percent B. Bas	Percent Bas.	Percent Prof.	Percent Adv.	Percent N.T.
All Students	1061	0.85	28.64	43.57	26.94	0.28	1.22	27.13	41.16	30.31	0.19	0.84	24.06	42.73	32.37	0.39
Hispanic / Latino	65	0.00	35.94	46.88	17.19	1.54	1.96	37.25	27.45	31.37	1.96	1.20	36.93	41.97	19.90	1.42
American Indian / Alaskan Native	208	1.93	48.31	39.61	10.14	0.48	3.19	47.34	39.89	9.57	0.00	2.58	51.41	37.19	8.83	0.54
Asian	*						0.00	21.43	28.57	42.86	7.14	3.25	33.77	35.06	27.92	7.23
Black / African American	15	0.00	53.33	33.33	13.33	0.00	0.00	43.75	37.50	18.75	0.00	3.15	39.76	41.73	15.35	1.17
Native Hawaiian / Pacific Islander	*											0.00	45.45	36.36	18.18	0.00
White / Caucasian	704	0.71	21.31	44.32	33.66	0.00	0.53	21.50	43.01	34.96	0.00	0.41	17.65	43.81	38.13	0.14
Multi-Racial	60	0.00	36.67	48.33	15.00	0.00	4.76	21.43	35.71	38.10	0.00	0.00	28.57	47.62	23.81	0.00
Student With Disabilities	154	4.55	57.79	26.62	11.04	0.00	1.45	56.52	31.16	10.87	0.00	2.75	52.25	32.80	12.21	0.33
English Language Learners	10	0.00	50.00	25.00	25.00	20.00	0.00	41.67	33.33	8.33	16.67	4.75	64.80	25.70	4.75	5.79
Economically Disadvantaged	532	1.69	38.98	42.37	16.95	0.19	2.34	38.48	41.80	17.19	0.20	1.55	35.94	43.20	19.31	0.64
Female	544	0.55	27.26	42.91	29.28	0.18	0.59	24.70	41.50	33.20	0.00	0.55	21.46	42.85	35.14	0.38
Male	517	1.17	30.10	44.27	24.47	0.39	1.78	29.31	40.85	27.71	0.36	1.11	26.55	42.62	29.72	0.40
Migrant	*											10.91	70.91	12.73	5.45	14.06
Gap	638	1.42	38.58	43.15	16.85	0.47	2.09	37.94	40.35	19.29	0.32	1.51	36.04	43.13	19.32	0.63
Non-Gap	423	0.00	13.71	44.21	42.08	0.00	0.00	12.08	42.28	45.64	0.00	0.05	10.00	42.27	47.69	0.11

B. Bas = Below Basic, Bas. = Basic, Prof. = Proficient, Adv. = Advanced, N.T. = Not Test

* No data will display at the school or district level if the subgroup does not meet minimum size for reporting purposes.

Rapid City Area 51-4

All Assessed: Reading Grade 05



* No bar will display at the school or district level if the subgroup does not meet minimum size for reporting purposes.

Rapid City Area 51-4

All Assessed: Reading Grade 05 - Data Matrix

	District Current Year						District Prior Year					State Current Year				
	Number Students	Percent B. Bas.	Percent Bas.	Percent Prof.	Percent Adv.	Percent N.T.	Percent B. Bas.	Percent Bas.	Percent Prof.	Percent Adv.	Percent N.T.	Percent B. Bas.	Percent Bas.	Percent Prof.	Percent Adv.	Percent N.T.
All Students	1068	0.84	30.83	49.77	18.56	0.09	1.02	30.31	49.59	18.98	0.10	0.74	26.00	49.55	23.71	0.32
Hispanic / Latino	61	0.00	40.98	36.07	22.95	0.00	2.33	39.53	44.19	13.95	0.00	0.26	37.04	47.88	14.81	0.26
American Indian / Alaskan Native	182	2.76	51.38	40.88	4.97	0.55	2.70	50.27	39.46	7.57	0.00	2.48	51.92	39.12	6.48	0.32
Asian	11	0.00	9.09	63.64	27.27	0.00	0.00	7.14	50.00	35.71	7.14	5.16	34.19	37.42	23.23	4.91
Black / African American	18	11.11	55.56	27.78	5.56	0.00	0.00	58.82	35.29	5.88	0.00	3.54	44.69	45.13	6.64	1.31
Native Hawaiian / Pacific Islander	*											0.00	0.00	60.00	40.00	0.00
White / Caucasian	750	0.13	24.80	53.47	21.60	0.00	0.58	23.84	52.62	22.97	0.00	0.28	20.06	51.88	27.78	0.19
Multi-Racial	46	2.17	30.43	47.83	19.57	0.00	0.00	36.36	57.58	6.06	0.00	1.10	32.97	46.70	19.23	0.00
Student With Disabilities	148	2.72	59.18	31.29	6.80	0.68	3.77	63.21	26.42	6.60	0.00	2.63	56.31	31.38	9.68	0.37
English Language Learners	14	0.00	64.29	35.71	0.00	0.00						4.18	68.36	25.07	2.39	3.74
Economically Disadvantaged	495	1.62	43.72	45.55	9.11	0.20	1.34	42.54	44.77	11.36	0.00	1.46	38.93	47.28	12.33	0.53
Female	516	0.39	24.85	53.20	21.55	0.19	0.59	24.55	52.28	22.38	0.20	0.59	22.43	50.60	26.39	0.32
Male	552	1.27	36.41	46.56	15.76	0.00	1.47	36.42	46.74	15.37	0.00	0.89	29.41	48.54	21.16	0.31
Migrant	*											13.56	64.41	20.34	1.69	7.81
Gap	597	1.51	43.29	44.97	10.23	0.17	1.46	41.68	45.34	11.52	0.00	1.39	39.63	46.30	12.68	0.49
Non-Gap	471	0.00	15.07	55.84	29.09	0.00	0.46	15.74	55.09	28.47	0.23	0.04	11.30	53.04	35.61	0.13

B. Bas = Below Basic, Bas. = Basic, Prof. = Proficient, Adv. = Advanced, N.T. = Not Test

* No data will display at the school or district level if the subgroup does not meet minimum size for reporting purposes.

Rapid City Area 51-4

All Assessed: Reading Grade 06



* No bar will display at the school or district level if the subgroup does not meet minimum size for reporting purposes.

Rapid City Area 51-4

All Assessed: Reading Grade 06 - Data Matrix

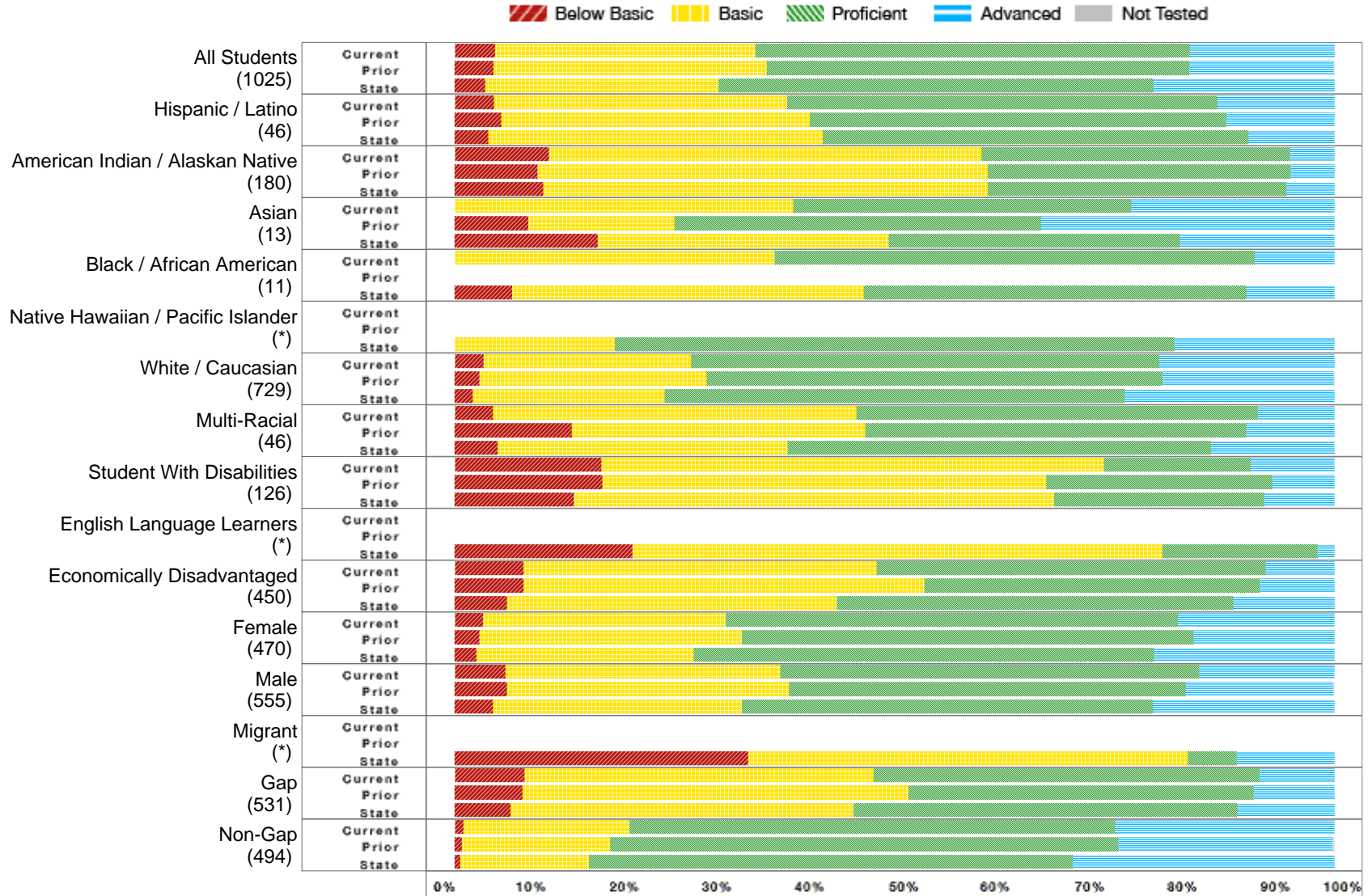
	District Current Year						District Prior Year					State Current Year				
	Number Students	Percent B. Bas	Percent Bas.	Percent Prof.	Percent Adv.	Percent N.T.	Percent B. Bas	Percent Bas.	Percent Prof.	Percent Adv.	Percent N.T.	Percent B. Bas	Percent Bas.	Percent Prof.	Percent Adv.	Percent N.T.
All Students	983	2.25	26.79	51.94	19.02	0.51	1.67	25.39	53.05	19.59	0.59	1.47	22.92	52.10	23.50	0.39
Hispanic / Latino	43	0.00	32.56	58.14	9.30	0.00	4.17	29.17	45.83	18.75	2.08	1.73	32.08	56.94	9.25	0.57
American Indian / Alaskan Native	181	3.87	46.96	40.88	8.29	0.00	2.19	50.27	43.17	3.83	1.62	4.12	47.18	42.30	6.39	0.50
Asian	10	0.00	20.00	50.00	30.00	0.00	0.00	42.86	28.57	28.57	0.00	6.52	32.61	36.96	23.91	9.80
Black / African American	16	12.50	37.50	50.00	0.00	0.00						3.89	35.41	44.36	16.34	1.91
Native Hawaiian / Pacific Islander	*															
White / Caucasian	694	1.59	20.87	54.20	23.33	0.58	1.25	18.19	56.11	24.31	0.28	0.84	17.94	53.97	27.25	0.11
Multi-Racial	39	5.26	28.95	57.89	7.89	2.56	2.44	31.71	56.10	9.76	0.00	1.72	20.69	55.17	22.41	0.57
Student With Disabilities	109	7.41	62.04	22.22	8.33	0.92	9.76	53.66	30.08	6.50	0.00	6.30	54.16	31.99	7.56	0.17
English Language Learners	*											8.74	67.31	21.36	2.59	6.93
Economically Disadvantaged	453	3.56	38.22	50.00	8.22	0.66	2.37	37.72	50.43	8.84	1.28	2.56	34.46	50.10	12.88	0.75
Female	518	1.55	23.26	55.62	19.57	0.39	0.64	23.55	56.53	19.06	0.43	1.23	19.76	54.43	24.58	0.39
Male	465	3.03	30.74	47.84	18.40	0.65	2.55	26.96	50.09	20.04	0.73	1.71	25.94	49.87	22.47	0.39
Migrant	*											13.64	61.36	22.73	2.27	20.00
Gap	529	3.42	38.40	48.86	9.32	0.57	2.90	36.96	50.18	9.42	1.08	2.65	35.20	49.50	12.66	0.71
Non-Gap	454	0.88	13.27	55.53	30.31	0.44	0.22	11.64	56.47	31.68	0.00	0.26	10.22	54.79	34.72	0.09

B. Bas = Below Basic, Bas. = Basic, Prof. = Proficient, Adv. = Advanced, N.T. = Not Test

* No data will display at the school or district level if the subgroup does not meet minimum size for reporting purposes.

Rapid City Area 51-4

All Assessed: Reading Grade 07



* No bar will display at the school or district level if the subgroup does not meet minimum size for reporting purposes.

Rapid City Area 51-4

All Assessed: Reading Grade 07 - Data Matrix

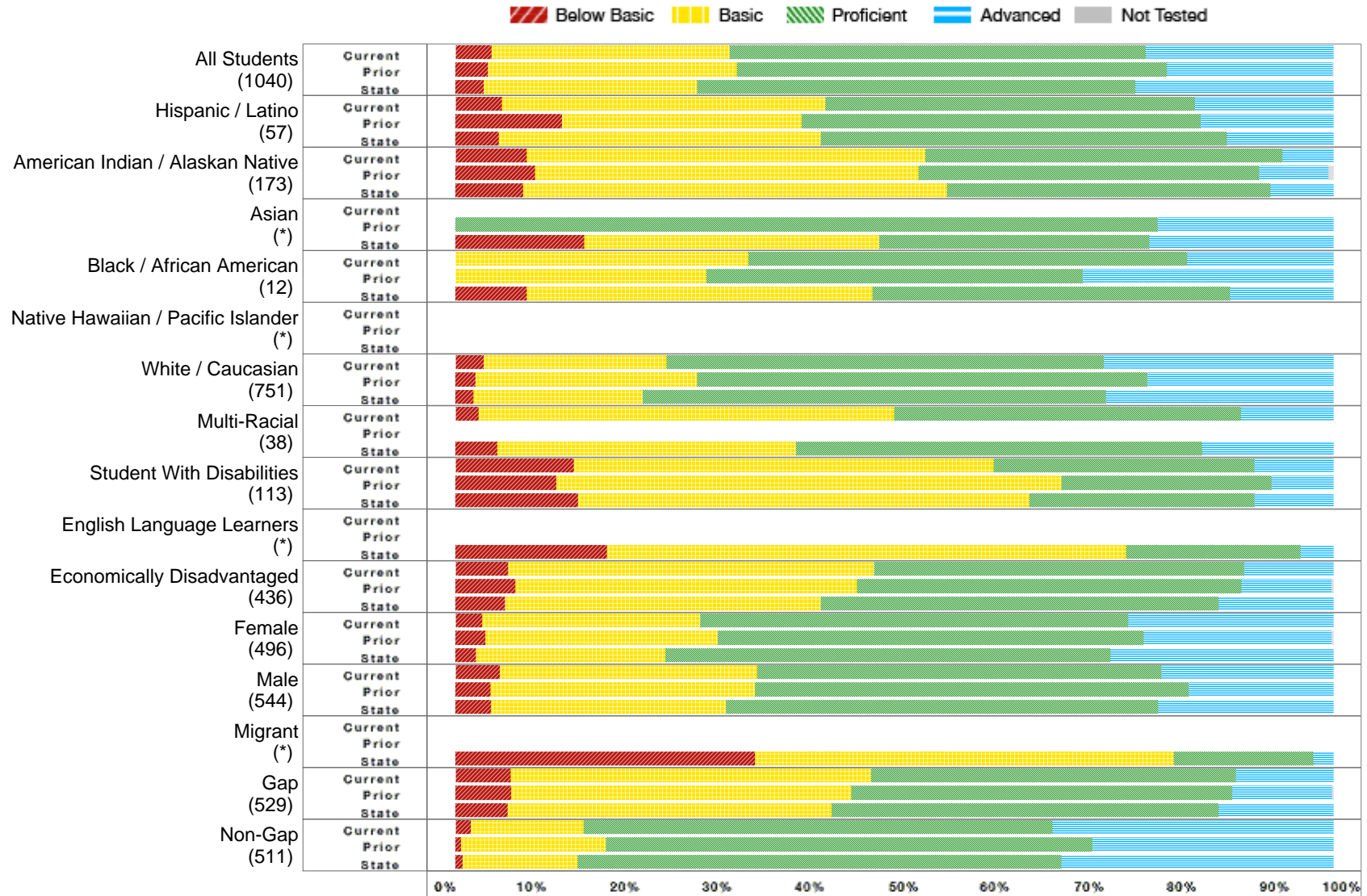
	District Current Year						District Prior Year					State Current Year				
	Number Students	Percent B. Bas	Percent Bas.	Percent Prof.	Percent Adv.	Percent N.T.	Percent B. Bas	Percent Bas.	Percent Prof.	Percent Adv.	Percent N.T.	Percent B. Bas	Percent Bas.	Percent Prof.	Percent Adv.	Percent N.T.
All Students	1025	4.60	29.58	49.36	16.45	0.39	4.43	31.02	48.07	16.38	0.38	3.45	26.55	49.42	20.58	0.38
Hispanic / Latino	46	4.44	33.33	48.89	13.33	2.17	5.26	35.09	47.37	12.28	0.00	3.80	38.04	48.37	9.78	1.34
American Indian / Alaskan Native	180	10.73	49.15	35.03	5.08	1.67	9.44	51.11	34.44	5.00	1.10	10.08	50.49	33.99	5.44	0.53
Asian	13	0.00	38.46	38.46	23.08	0.00	8.33	16.67	41.67	33.33	0.00	16.23	33.12	33.12	17.53	4.35
Black / African American	11	0.00	36.36	54.55	9.09	0.00						6.52	40.00	43.48	10.00	2.95
Native Hawaiian / Pacific Islander	*											0.00	18.18	63.64	18.18	0.00
White / Caucasian	729	3.29	23.59	53.22	19.89	0.00	2.80	25.83	51.80	19.44	0.13	2.07	21.76	52.28	23.89	0.16
Multi-Racial	46	4.35	41.30	45.65	8.70	0.00	13.33	33.33	43.33	10.00	3.23	4.88	32.93	48.17	14.02	0.00
Student With Disabilities	126	16.67	57.14	16.67	9.52	0.00	16.81	50.44	25.66	7.08	0.00	13.53	54.57	23.90	8.00	0.44
English Language Learners	*											20.19	60.26	17.63	1.92	5.74
Economically Disadvantaged	450	7.81	40.18	44.20	7.81	0.44	7.84	45.53	38.13	8.50	0.43	5.97	37.46	45.08	11.49	0.64
Female	470	3.21	27.62	51.39	17.77	0.64	2.81	29.86	51.30	16.03	0.40	2.46	24.67	52.35	20.51	0.39
Male	555	5.78	31.23	47.65	15.34	0.18	5.94	32.10	45.08	16.70	0.37	4.36	28.28	46.72	20.64	0.38
Migrant	*											33.33	50.00	5.56	11.11	5.26
Gap	531	7.97	39.66	43.83	8.54	0.75	7.71	43.85	39.27	9.17	0.55	6.36	38.98	43.62	11.04	0.68
Non-Gap	494	1.01	18.83	55.26	24.90	0.00	0.81	16.84	57.81	24.34	0.20	0.65	14.59	54.99	29.76	0.10

B. Bas = Below Basic, Bas. = Basic, Prof. = Proficient, Adv. = Advanced, N.T. = Not Test

* No data will display at the school or district level if the subgroup does not meet minimum size for reporting purposes.

Rapid City Area 51-4

All Assessed: Reading Grade 08



* No bar will display at the school or district level if the subgroup does not meet minimum size for reporting purposes.

Rapid City Area 51-4

All Assessed: Reading Grade 08 - Data Matrix

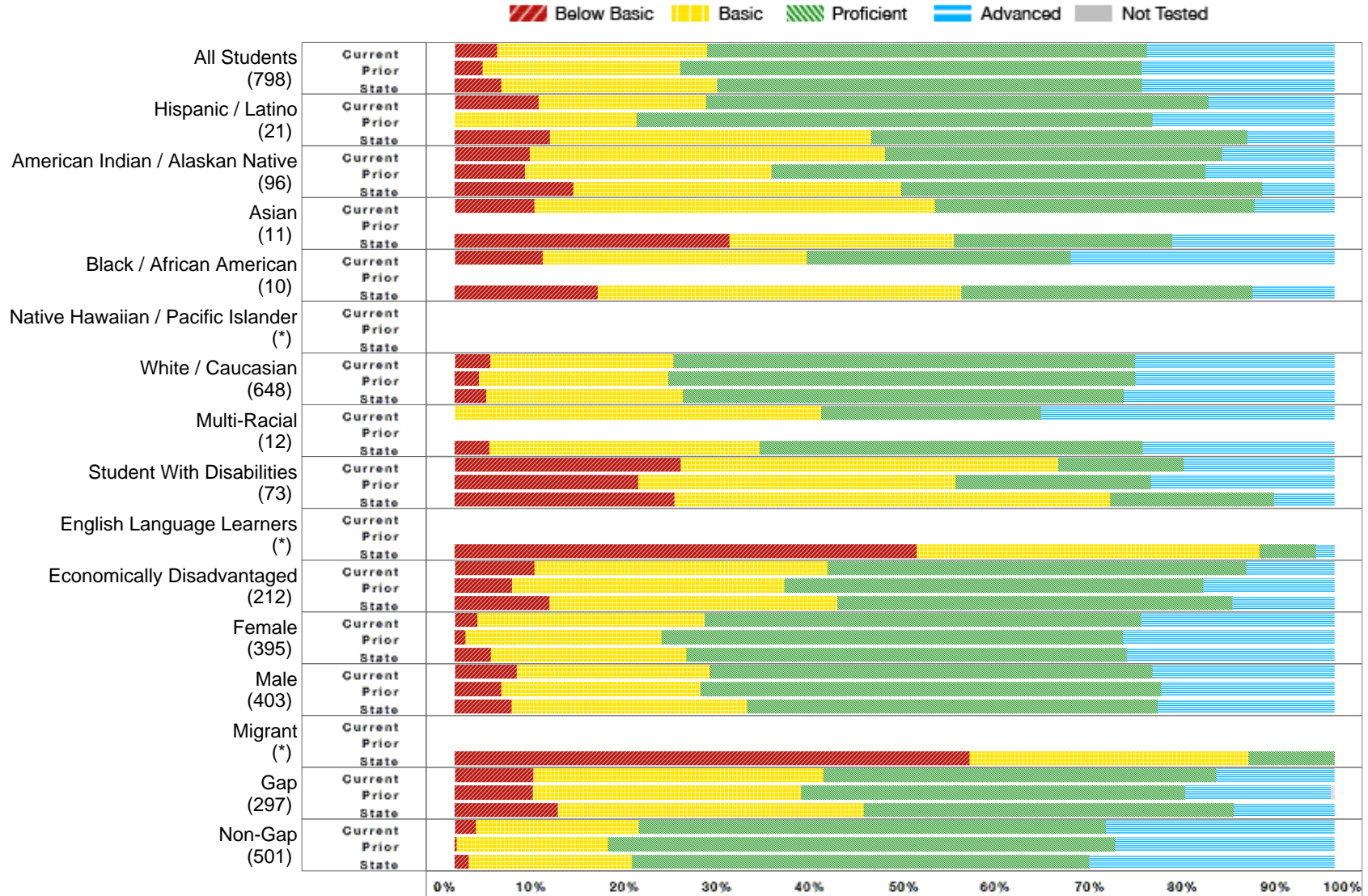
	District Current Year						District Prior Year					State Current Year				
	Number Students	Percent B. Bas	Percent Bas.	Percent Prof.	Percent Adv.	Percent N.T.	Percent B. Bas	Percent Bas.	Percent Prof.	Percent Adv.	Percent N.T.	Percent B. Bas	Percent Bas.	Percent Prof.	Percent Adv.	Percent N.T.
All Students	1040	4.09	27.14	47.37	21.40	1.15	3.69	28.38	48.98	18.85	0.20	3.23	24.29	49.90	22.58	0.70
Hispanic / Latino	57	5.26	36.84	42.11	15.79	0.00	12.12	27.27	45.45	15.15	0.00	4.91	36.71	46.24	12.14	1.98
American Indian / Alaskan Native	173	8.14	45.35	40.70	5.81	0.58	9.09	43.64	38.79	7.88	1.20	7.69	48.32	36.84	7.16	0.96
Asian	*						0.00	0.00	80.00	20.00	0.00	14.69	33.57	30.77	20.98	11.73
Black / African American	12	0.00	33.33	50.00	16.67	0.00	0.00	28.57	42.86	28.57	0.00	8.14	39.37	40.72	11.76	1.78
Native Hawaiian / Pacific Islander	*															
White / Caucasian	751	3.24	20.78	49.80	26.18	1.33	2.28	25.23	51.28	21.21	0.00	2.07	19.24	52.76	25.93	0.33
Multi-Racial	38	2.63	47.37	39.47	10.53	0.00						4.76	34.01	46.26	14.97	0.68
Student With Disabilities	113	13.51	47.75	29.73	9.01	1.77	11.50	57.52	23.89	7.08	0.00	13.94	51.38	25.69	8.98	0.38
English Language Learners	*											17.23	59.18	19.85	3.75	11.30
Economically Disadvantaged	436	6.02	41.67	42.13	10.19	0.92	6.81	38.93	43.80	10.22	0.24	5.64	35.95	45.33	13.08	1.26
Female	496	3.05	24.80	48.78	23.37	0.81	3.39	26.48	48.52	21.40	0.42	2.35	21.59	50.65	25.40	0.79
Male	544	5.04	29.29	46.08	19.59	1.47	3.97	30.16	49.40	16.47	0.00	4.04	26.76	49.21	19.99	0.63
Migrant	*											34.09	47.73	15.91	2.27	24.14
Gap	529	6.32	41.00	41.57	11.11	1.32	6.33	38.77	43.38	11.32	0.38	5.97	36.90	44.03	13.10	1.20
Non-Gap	511	1.78	12.85	53.36	32.02	0.98	0.66	16.48	55.38	27.47	0.00	0.80	13.07	55.12	31.01	0.28

B. Bas = Below Basic, Bas. = Basic, Prof. = Proficient, Adv. = Advanced, N.T. = Not Test

* No data will display at the school or district level if the subgroup does not meet minimum size for reporting purposes.

Rapid City Area 51-4

All Assessed: Reading Grade 11



* No bar will display at the school or district level if the subgroup does not meet minimum size for reporting purposes.

Rapid City Area 51-4

All Assessed: Reading Grade 11 - Data Matrix

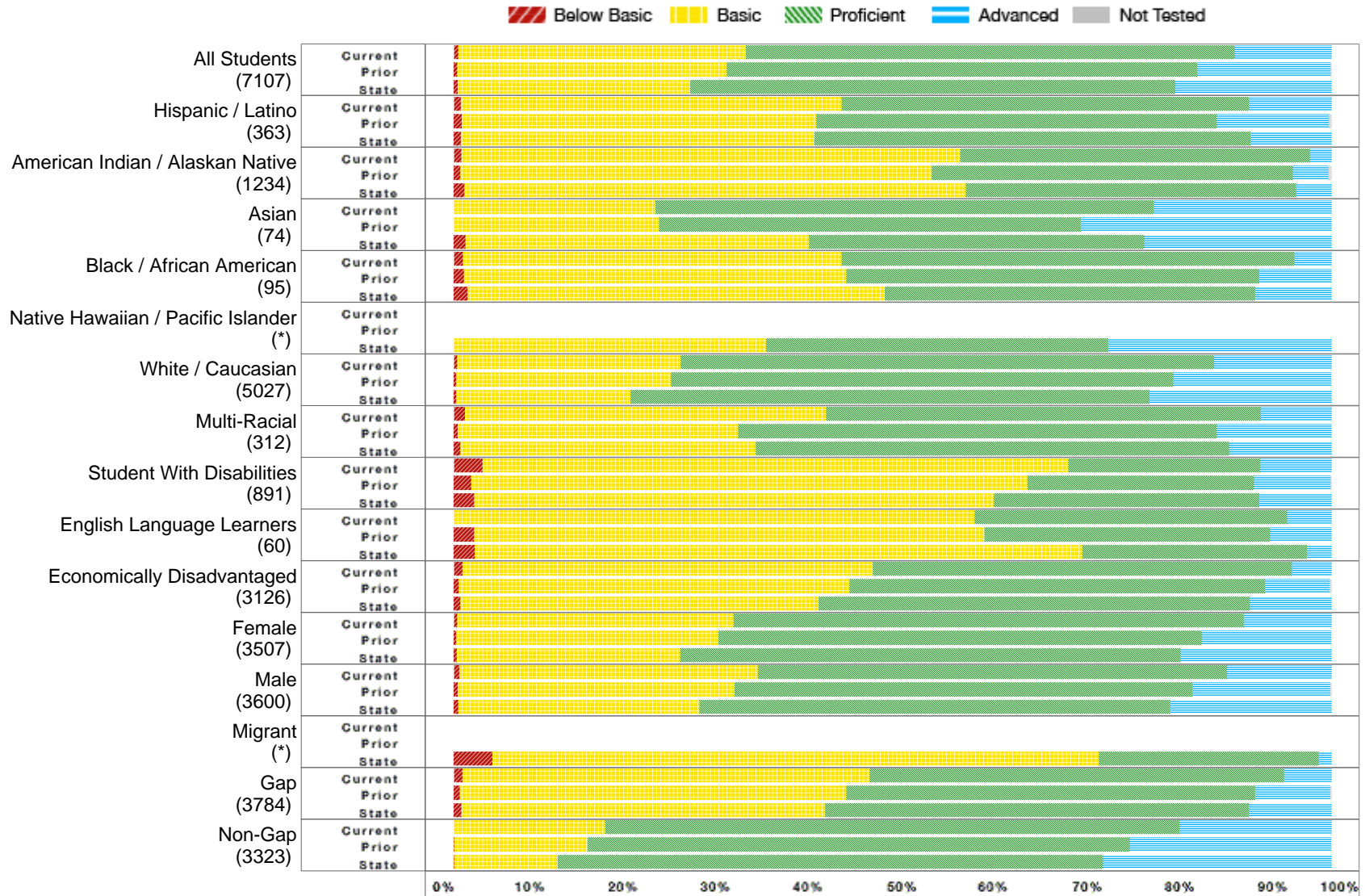
	District Current Year						District Prior Year					State Current Year				
	Number Students	Percent B. Bas	Percent Bas.	Percent Prof.	Percent Adv.	Percent N.T.	Percent B. Bas	Percent Bas.	Percent Prof.	Percent Adv.	Percent N.T.	Percent B. Bas	Percent Bas.	Percent Prof.	Percent Adv.	Percent N.T.
All Students	798	4.82	23.86	50.00	21.32	1.25	3.19	22.45	52.42	21.94	0.76	5.30	24.50	48.35	21.85	1.25
Hispanic / Latino	21	9.52	19.05	57.14	14.29	0.00	0.00	20.69	58.62	20.69	0.00	10.81	36.49	42.79	9.91	2.20
American Indian / Alaskan Native	96	8.51	40.43	38.30	12.77	2.08	8.00	28.00	49.33	14.67	1.32	13.50	37.24	41.10	8.16	4.53
Asian	11	9.09	45.45	36.36	9.09	0.00						31.21	25.53	24.82	18.44	1.40
Black / African American	10	10.00	30.00	30.00	30.00	0.00						16.28	41.28	33.14	9.30	1.15
Native Hawaiian / Pacific Islander	*															
White / Caucasian	648	4.06	20.78	52.50	22.66	1.23	2.73	21.55	53.11	22.61	0.75	3.56	22.39	50.14	23.92	0.90
Multi-Racial	12	0.00	41.67	25.00	33.33	0.00						3.96	30.69	43.56	21.78	0.98
Student With Disabilities	73	25.71	42.86	14.29	17.14	4.11	20.83	36.11	22.22	20.83	0.00	24.96	49.51	18.62	6.91	2.48
English Language Learners	*											52.48	39.01	6.38	2.13	3.42
Economically Disadvantaged	212	9.05	33.33	47.62	10.00	0.94	6.55	30.95	47.62	14.88	1.75	10.77	32.73	44.89	11.61	1.96
Female	395	2.56	25.83	49.62	21.99	1.01	1.23	22.30	52.45	24.02	0.73	4.10	22.22	50.05	23.62	1.12
Male	403	7.05	21.91	50.38	20.65	1.49	5.32	22.61	52.39	19.68	0.79	6.48	26.75	46.67	20.10	1.39
Migrant	*											58.54	31.71	9.76	0.00	2.38
Gap	297	8.93	32.99	44.67	13.40	2.02	8.88	30.50	43.63	16.60	1.15	11.70	34.81	42.05	11.44	2.24
Non-Gap	501	2.41	18.51	53.12	25.96	0.80	0.20	17.25	57.65	24.90	0.39	1.61	18.56	51.98	27.86	0.68

B. Bas = Below Basic, Bas. = Basic, Prof. = Proficient, Adv. = Advanced, N.T. = Not Test

* No data will display at the school or district level if the subgroup does not meet minimum size for reporting purposes.

Rapid City Area 51-4

All Assessed: Math All Grades



* No bar will display at the school or district level if the subgroup does not meet minimum size for reporting purposes.

Rapid City Area 51-4

All Assessed: Math All Grades - Data Matrix

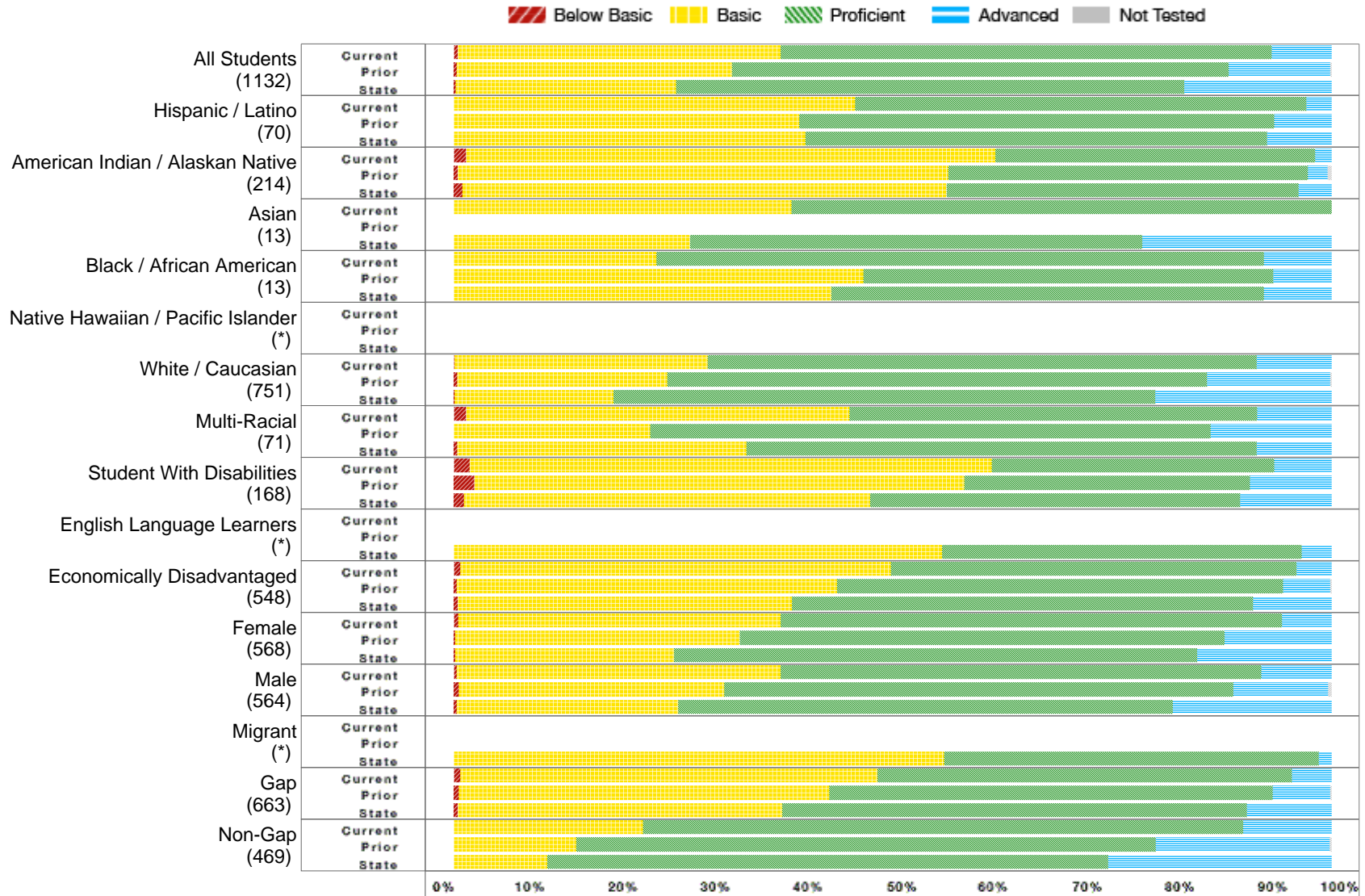
	District Current Year						District Prior Year					State Current Year				
	Number Students	Percent B. Bas.	Percent Bas.	Percent Prof.	Percent Adv.	Percent N.T.	Percent B. Bas.	Percent Bas.	Percent Prof.	Percent Adv.	Percent N.T.	Percent B. Bas.	Percent Bas.	Percent Prof.	Percent Adv.	Percent N.T.
All Students	7107	0.54	32.73	55.75	10.98	0.45	0.39	30.70	53.60	15.19	0.33	0.46	26.47	55.27	17.80	0.33
Hispanic / Latino	363	0.83	43.37	46.41	9.39	0.28	0.93	40.37	45.65	12.73	0.31	0.79	40.26	49.72	9.22	0.47
American Indian / Alaskan Native	1234	0.90	56.82	39.84	2.45	0.73	0.75	53.68	41.14	4.10	1.00	1.20	57.12	37.62	4.06	0.86
Asian	74	0.00	22.97	56.76	20.27	0.00	0.00	23.38	48.05	28.57	0.00	1.35	39.12	38.22	21.31	0.27
Black / African American	95	1.05	43.16	51.58	4.21	0.00	1.18	43.53	47.06	8.24	0.00	1.56	47.51	42.22	8.71	0.36
Native Hawaiian / Pacific Islander	*											0.00	35.59	38.98	25.42	0.00
White / Caucasian	5027	0.38	25.49	60.77	13.36	0.42	0.26	24.48	57.21	17.99	0.18	0.27	19.90	59.12	20.71	0.25
Multi-Racial	312	1.29	41.16	49.52	8.04	0.32	0.45	31.98	54.50	13.06	0.45	0.73	33.66	53.96	11.65	0.24
Student With Disabilities	891	3.28	66.74	21.83	8.14	0.79	2.02	63.35	25.82	8.69	0.13	2.33	59.22	30.22	8.23	0.50
English Language Learners	60	0.00	59.32	35.59	5.08	1.67	2.33	58.14	32.56	6.98	2.27	2.41	69.18	25.60	2.80	0.64
Economically Disadvantaged	3126	1.00	46.72	47.75	4.53	0.45	0.60	44.51	47.32	7.38	0.53	0.75	40.78	49.20	9.27	0.42
Female	3507	0.43	31.46	58.09	10.02	0.40	0.29	29.89	55.06	14.70	0.32	0.37	25.46	56.99	17.18	0.32
Male	3600	0.64	33.98	53.46	11.92	0.50	0.48	31.49	52.19	15.67	0.34	0.54	27.41	53.65	18.40	0.34
Migrant	*											4.42	69.04	25.06	1.47	0.25
Gap	3784	1.01	46.37	47.20	5.42	0.55	0.67	44.07	46.52	8.55	0.48	0.90	41.42	48.27	9.42	0.45
Non-Gap	3323	0.00	17.24	65.46	17.30	0.33	0.06	15.17	61.78	22.92	0.12	0.03	11.79	62.15	26.03	0.22

B. Bas = Below Basic, Bas. = Basic, Prof. = Proficient, Adv. = Advanced, N.T. = Not Test

* No data will display at the school or district level if the subgroup does not meet minimum size for reporting purposes.

Rapid City Area 51-4

All Assessed: Math Grade 03



* No bar will display at the school or district level if the subgroup does not meet minimum size for reporting purposes.

Rapid City Area 51-4

All Assessed: Math Grade 03 - Data Matrix

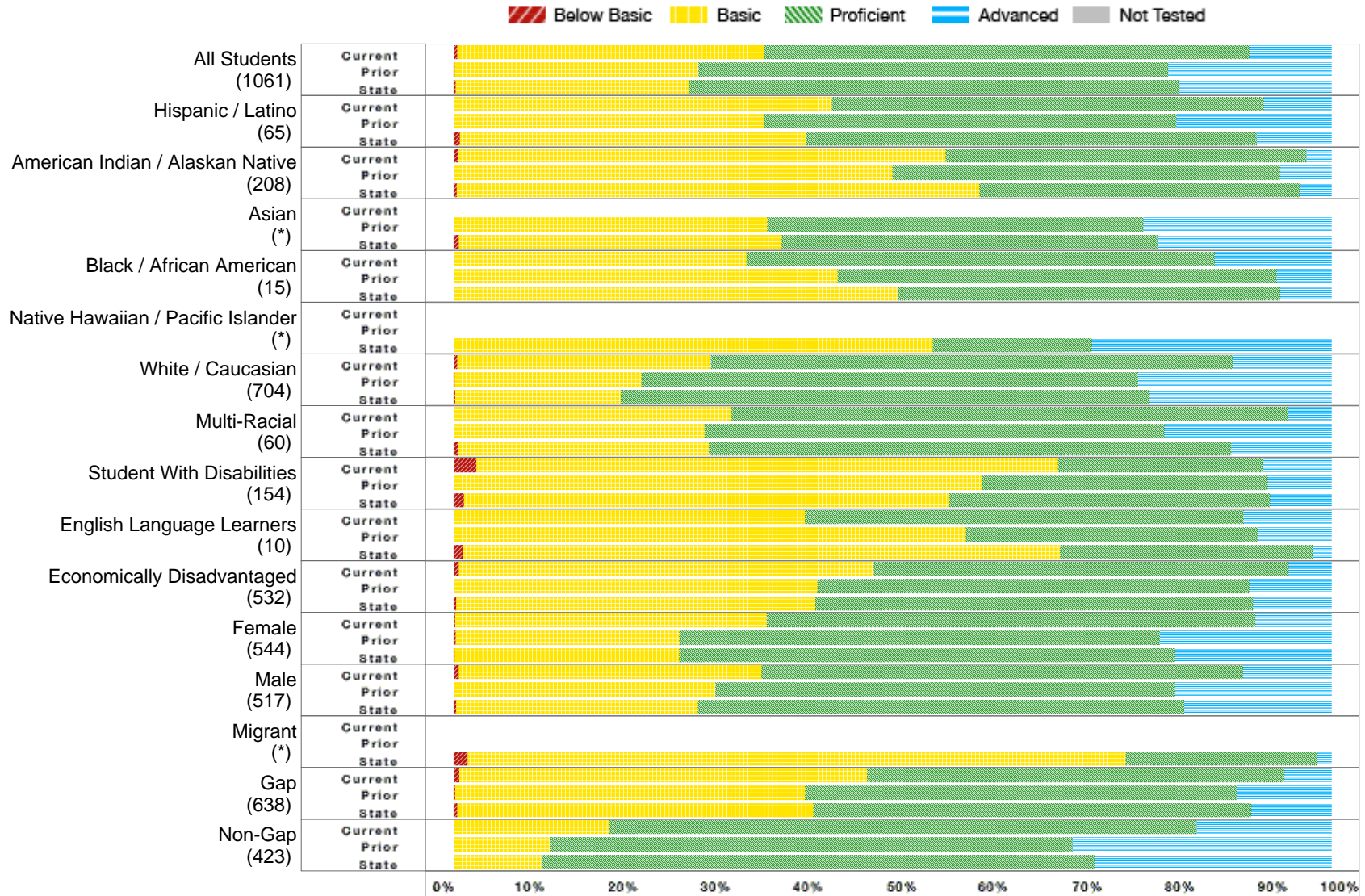
	District Current Year						District Prior Year					State Current Year				
	Number Students	Percent B. Bas	Percent Bas.	Percent Prof.	Percent Adv.	Percent N.T.	Percent B. Bas	Percent Bas.	Percent Prof.	Percent Adv.	Percent N.T.	Percent B. Bas	Percent Bas.	Percent Prof.	Percent Adv.	Percent N.T.
All Students	1132	0.44	36.78	55.97	6.81	0.09	0.37	31.35	56.58	11.52	0.36	0.24	25.12	57.88	16.76	0.15
Hispanic / Latino	70	0.00	45.71	51.43	2.86	0.00	0.00	39.34	54.10	6.56	0.00	0.00	40.09	52.53	7.37	0.23
American Indian / Alaskan Native	214	1.40	60.28	36.45	1.87	0.00	0.45	55.91	40.91	2.27	1.35	1.01	55.13	40.12	3.73	0.31
Asian	13	0.00	38.46	61.54	0.00	0.00						0.00	26.95	51.50	21.56	0.00
Black / African American	13	0.00	23.08	69.23	7.69	0.00	0.00	46.67	46.67	6.67	0.00	0.00	43.01	49.30	7.69	0.35
Native Hawaiian / Pacific Islander	*															
White / Caucasian	751	0.13	28.80	62.53	8.53	0.13	0.41	23.91	61.48	14.07	0.14	0.13	18.05	61.72	20.10	0.12
Multi-Racial	71	1.41	43.66	46.48	8.45	0.00	0.00	22.41	63.79	13.79	0.00	0.39	32.95	58.14	8.53	0.00
Student With Disabilities	168	1.79	59.52	32.14	6.55	0.00	2.33	55.81	32.56	9.30	0.00	1.16	46.26	42.18	10.41	0.24
English Language Learners	*											0.00	55.65	40.93	3.43	0.20
Economically Disadvantaged	548	0.73	49.09	46.17	4.01	0.00	0.36	43.29	50.81	5.37	0.53	0.46	38.06	52.55	8.93	0.14
Female	568	0.53	36.68	57.14	5.64	0.18	0.18	32.38	55.28	12.16	0.36	0.17	24.95	59.54	15.34	0.12
Male	564	0.35	36.88	54.79	7.98	0.00	0.56	30.28	57.94	10.84	0.37	0.32	25.28	56.30	18.11	0.18
Migrant	*											0.00	55.88	42.65	1.47	0.00
Gap	663	0.75	47.51	47.21	4.52	0.00	0.59	42.20	50.52	6.54	0.44	0.44	37.00	52.92	9.64	0.15
Non-Gap	469	0.00	21.58	68.38	10.04	0.21	0.00	13.98	66.02	19.76	0.24	0.00	10.64	63.92	25.44	0.16

B. Bas = Below Basic, Bas. = Basic, Prof. = Proficient, Adv. = Advanced, N.T. = Not Test

* No data will display at the school or district level if the subgroup does not meet minimum size for reporting purposes.

Rapid City Area 51-4

All Assessed: Math Grade 04



* No bar will display at the school or district level if the subgroup does not meet minimum size for reporting purposes.

Rapid City Area 51-4

All Assessed: Math Grade 04 - Data Matrix

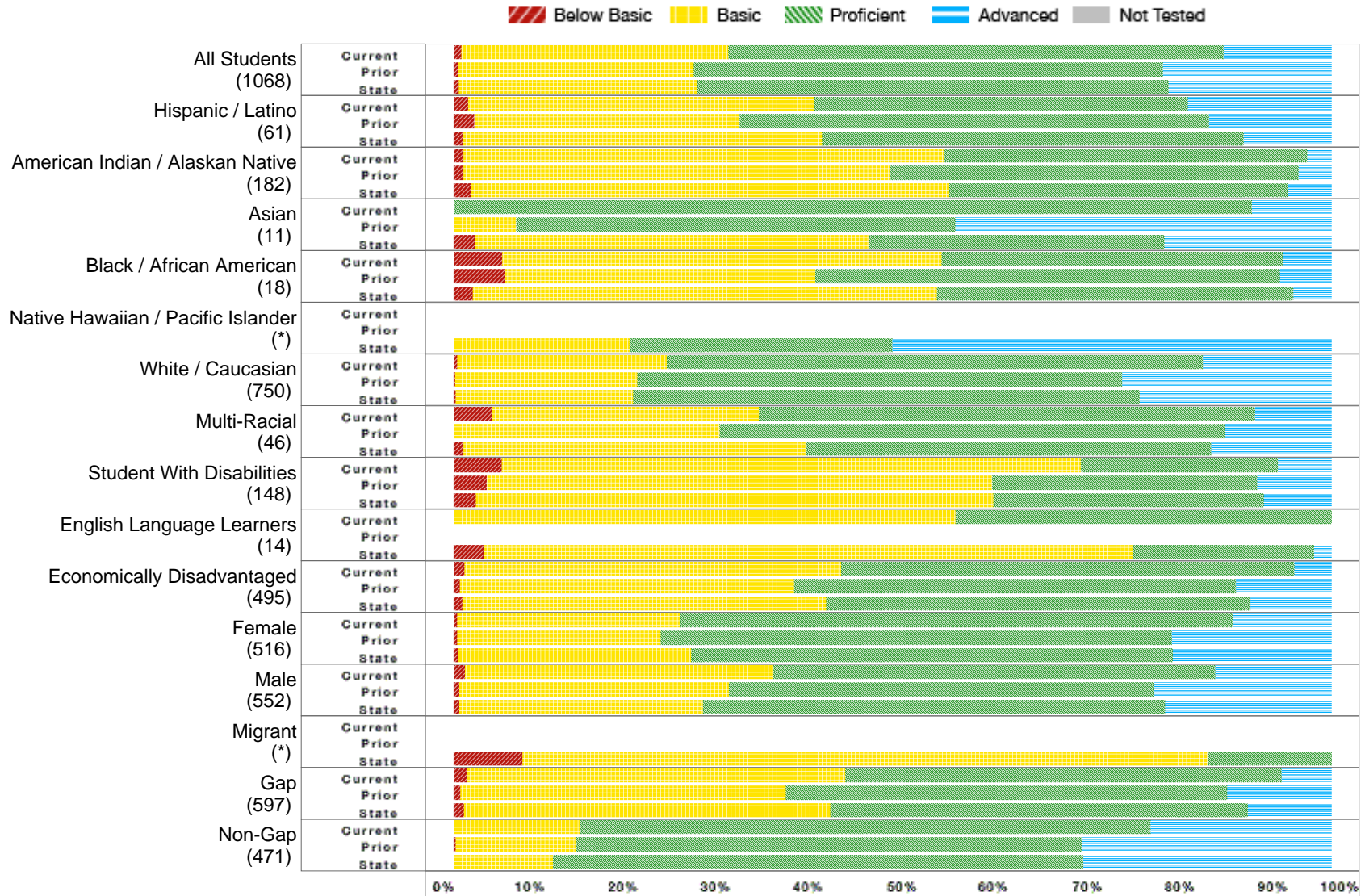
	District Current Year						District Prior Year					State Current Year				
	Number Students	Percent B. Bas	Percent Bas.	Percent Prof.	Percent Adv.	Percent N.T.	Percent B. Bas	Percent Bas.	Percent Prof.	Percent Adv.	Percent N.T.	Percent B. Bas	Percent Bas.	Percent Prof.	Percent Adv.	Percent N.T.
All Students	1061	0.38	35.00	55.28	9.34	0.09	0.09	27.78	53.51	18.62	0.00	0.22	26.53	55.95	17.30	0.19
Hispanic / Latino	65	0.00	43.08	49.23	7.69	0.00	0.00	35.29	47.06	17.65	0.00	0.71	39.43	51.31	8.55	0.47
American Indian / Alaskan Native	208	0.48	55.56	41.06	2.90	0.48	0.00	50.00	44.15	5.85	0.00	0.31	59.53	36.64	3.52	0.54
Asian	*						0.00	35.71	42.86	21.43	0.00	0.60	36.75	42.77	19.88	0.00
Black / African American	15	0.00	33.33	53.33	13.33	0.00	0.00	43.75	50.00	6.25	0.00	0.00	50.58	43.58	5.84	0.00
Native Hawaiian / Pacific Islander	*											0.00	54.55	18.18	27.27	0.00
White / Caucasian	704	0.43	28.84	59.52	11.22	0.00	0.13	21.24	56.60	22.03	0.00	0.16	18.86	60.28	20.70	0.12
Multi-Racial	60	0.00	31.67	63.33	5.00	0.00	0.00	28.57	52.38	19.05	0.00	0.48	28.57	59.52	11.43	0.00
Student With Disabilities	154	2.60	66.23	23.38	7.79	0.00	0.00	60.14	32.61	7.25	0.00	1.14	55.33	36.55	6.98	0.33
English Language Learners	10	0.00	40.00	50.00	10.00	0.00	0.00	58.33	33.33	8.33	0.00	1.06	67.99	28.84	2.12	0.53
Economically Disadvantaged	532	0.56	47.27	47.27	4.90	0.19	0.00	41.41	49.22	9.38	0.00	0.30	40.90	49.87	8.93	0.28
Female	544	0.18	35.48	55.70	8.64	0.00	0.20	25.49	54.74	19.57	0.00	0.13	25.54	56.52	17.81	0.17
Male	517	0.58	34.50	54.84	10.08	0.19	0.00	29.84	52.40	17.76	0.00	0.30	27.48	55.41	16.81	0.20
Migrant	*											1.56	75.00	21.88	1.56	0.00
Gap	638	0.63	46.47	47.57	5.34	0.16	0.16	39.87	49.20	10.77	0.00	0.40	40.56	49.93	9.11	0.25
Non-Gap	423	0.00	17.73	66.90	15.37	0.00	0.00	10.96	59.51	29.53	0.00	0.00	10.00	63.05	26.95	0.11

B. Bas = Below Basic, Bas. = Basic, Prof. = Proficient, Adv. = Advanced, N.T. = Not Test

* No data will display at the school or district level if the subgroup does not meet minimum size for reporting purposes.

Rapid City Area 51-4

All Assessed: Math Grade 05



* No bar will display at the school or district level if the subgroup does not meet minimum size for reporting purposes.

Rapid City Area 51-4

All Assessed: Math Grade 05 - Data Matrix

	District Current Year						District Prior Year					State Current Year				
	Number Students	Percent B. Bas	Percent Bas.	Percent Prof.	Percent Adv.	Percent N.T.	Percent B. Bas	Percent Bas.	Percent Prof.	Percent Adv.	Percent N.T.	Percent B. Bas	Percent Bas.	Percent Prof.	Percent Adv.	Percent N.T.
All Students	1068	0.84	30.46	56.42	12.28	0.09	0.51	26.84	53.47	19.18	0.00	0.59	27.13	53.72	18.56	0.16
Hispanic / Latino	61	1.64	39.34	42.62	16.39	0.00	2.33	30.23	53.49	13.95	0.00	1.06	40.90	48.02	10.03	0.00
American Indian / Alaskan Native	182	1.10	54.70	41.44	2.76	0.55	1.08	48.65	46.49	3.78	0.00	1.92	54.56	38.56	4.96	0.32
Asian	11	0.00	0.00	90.91	9.09	0.00	0.00	7.14	50.00	42.86	0.00	2.45	44.79	33.74	19.02	0.00
Black / African American	18	5.56	50.00	38.89	5.56	0.00	5.88	35.29	52.94	5.88	0.00	2.18	52.84	40.61	4.37	0.00
Native Hawaiian / Pacific Islander	*											0.00	20.00	30.00	50.00	0.00
White / Caucasian	750	0.40	23.87	61.07	14.67	0.00	0.15	20.78	55.23	23.84	0.00	0.23	20.19	57.72	21.86	0.15
Multi-Racial	46	4.35	30.43	56.52	8.70	0.00	0.00	30.30	57.58	12.12	0.00	1.10	39.01	46.15	13.74	0.00
Student With Disabilities	148	5.44	65.99	22.45	6.12	0.68	3.77	57.55	30.19	8.49	0.00	2.55	58.89	30.83	7.73	0.30
English Language Learners	14	0.00	57.14	42.86	0.00	0.00						3.45	73.85	20.69	2.01	0.00
Economically Disadvantaged	495	1.21	42.91	51.62	4.25	0.20	0.67	38.08	50.33	10.91	0.00	0.99	41.45	48.32	9.24	0.22
Female	516	0.39	25.44	62.91	11.26	0.19	0.40	23.17	58.22	18.22	0.00	0.52	26.52	54.86	18.11	0.15
Male	552	1.27	35.14	50.36	13.22	0.00	0.63	30.74	48.42	20.21	0.00	0.66	27.71	52.64	18.98	0.16
Migrant	*											7.81	78.13	14.06	0.00	0.00
Gap	597	1.51	43.12	49.66	5.70	0.17	0.73	37.11	50.27	11.88	0.00	1.14	41.77	47.54	9.55	0.18
Non-Gap	471	0.00	14.44	64.97	20.59	0.00	0.23	13.66	57.64	28.47	0.00	0.00	11.30	60.41	28.29	0.13

B. Bas = Below Basic, Bas. = Basic, Prof. = Proficient, Adv. = Advanced, N.T. = Not Test

* No data will display at the school or district level if the subgroup does not meet minimum size for reporting purposes.

Rapid City Area 51-4

All Assessed: Math Grade 06



* No bar will display at the school or district level if the subgroup does not meet minimum size for reporting purposes.

Rapid City Area 51-4

All Assessed: Math Grade 06 - Data Matrix

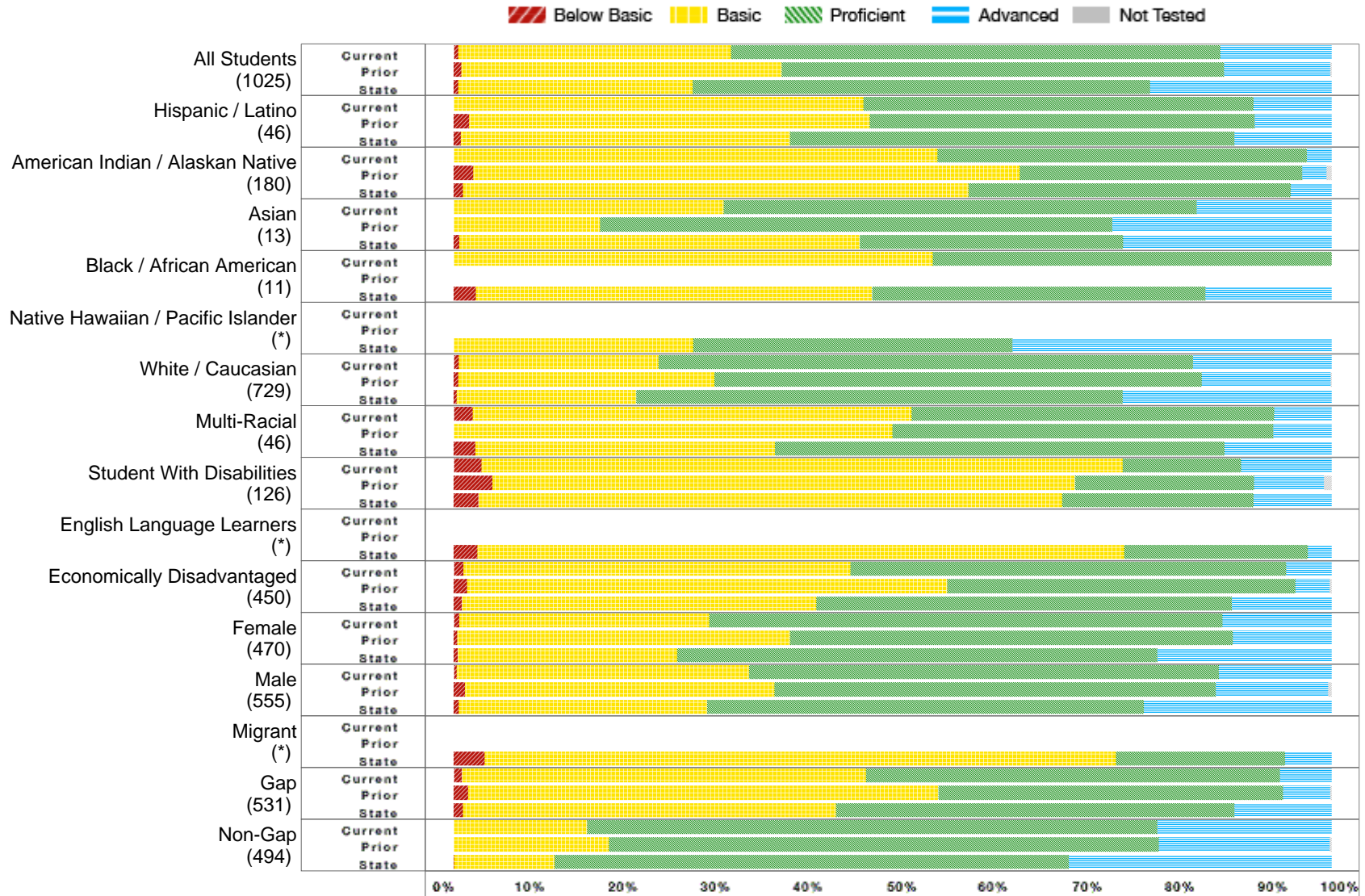
	District Current Year						District Prior Year					State Current Year				
	Number Students	Percent B. Bas	Percent Bas.	Percent Prof.	Percent Adv.	Percent N.T.	Percent B. Bas	Percent Bas.	Percent Prof.	Percent Adv.	Percent N.T.	Percent B. Bas	Percent Bas.	Percent Prof.	Percent Adv.	Percent N.T.
All Students	983	0.92	29.11	60.98	8.99	0.41	0.39	26.38	54.82	18.11	0.59	1.11	25.43	56.11	17.35	0.16
Hispanic / Latino	43	2.33	41.86	46.51	9.30	0.00	2.08	37.50	37.50	20.83	2.08	1.72	40.80	49.43	8.05	0.00
American Indian / Alaskan Native	181	1.10	52.49	45.30	1.10	0.00	1.09	46.45	46.99	4.92	1.62	2.61	52.90	40.45	4.04	0.50
Asian	10	0.00	0.00	60.00	40.00	0.00	0.00	42.86	42.86	14.29	0.00	3.27	33.99	41.18	21.57	0.00
Black / African American	16	0.00	62.50	37.50	0.00	0.00						4.60	42.91	39.46	13.03	0.38
Native Hawaiian / Pacific Islander	*															
White / Caucasian	694	0.87	21.27	66.86	11.00	0.43	0.14	20.00	57.78	21.94	0.28	0.68	19.30	59.84	20.18	0.10
Multi-Racial	39	0.00	39.47	55.26	5.26	2.56	0.00	31.71	58.54	9.76	0.00	0.57	28.74	59.20	11.49	0.57
Student With Disabilities	109	6.48	66.67	22.22	4.63	0.92	0.81	69.11	23.58	6.50	0.00	5.63	59.87	27.46	7.05	0.17
English Language Learners	*											6.97	73.64	16.36	3.03	0.60
Economically Disadvantaged	453	2.00	40.67	54.00	3.33	0.66	0.65	38.36	51.08	9.27	1.28	1.70	38.76	50.25	9.30	0.25
Female	518	0.58	25.53	65.57	8.32	0.19	0.43	23.98	57.39	17.99	0.43	0.94	24.49	57.56	17.02	0.20
Male	465	1.30	33.12	55.84	9.74	0.65	0.36	28.42	52.64	18.21	0.73	1.27	26.33	54.73	17.67	0.12
Migrant	*											14.55	60.00	23.64	1.82	0.00
Gap	529	1.71	40.87	53.99	3.42	0.57	0.54	39.67	49.09	10.14	1.08	2.05	39.43	49.34	9.18	0.27
Non-Gap	454	0.00	15.45	69.09	15.45	0.22	0.22	10.56	61.64	27.59	0.00	0.13	10.87	63.15	25.85	0.07

B. Bas = Below Basic, Bas. = Basic, Prof. = Proficient, Adv. = Advanced, N.T. = Not Test

* No data will display at the school or district level if the subgroup does not meet minimum size for reporting purposes.

Rapid City Area 51-4

All Assessed: Math Grade 07



* No bar will display at the school or district level if the subgroup does not meet minimum size for reporting purposes.

Rapid City Area 51-4

All Assessed: Math Grade 07 - Data Matrix

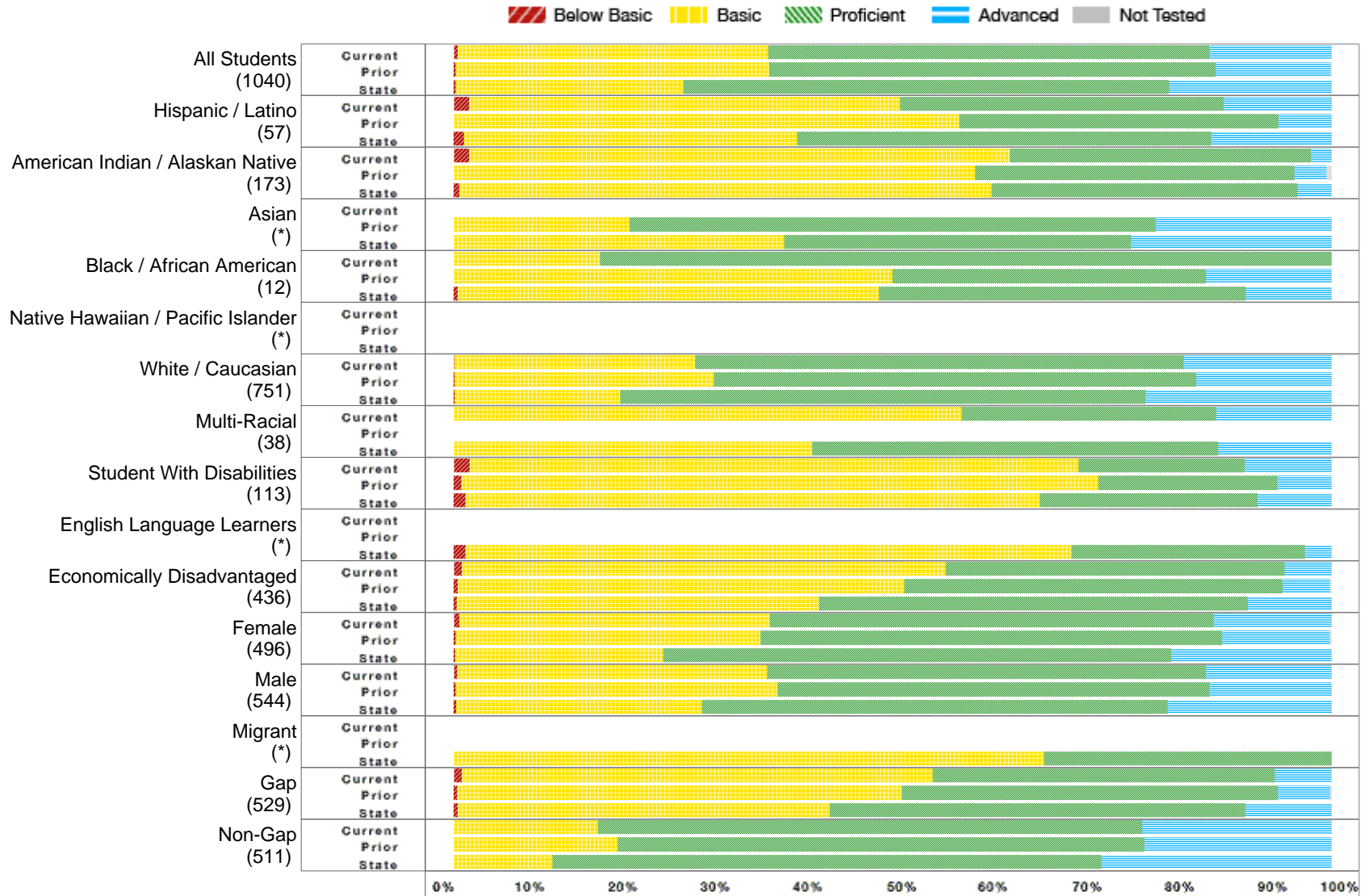
	District Current Year						District Prior Year					State Current Year				
	Number Students	Percent B. Bas	Percent Bas.	Percent Prof.	Percent Adv.	Percent N.T.	Percent B. Bas	Percent Bas.	Percent Prof.	Percent Adv.	Percent N.T.	Percent B. Bas	Percent Bas.	Percent Prof.	Percent Adv.	Percent N.T.
All Students	1025	0.49	31.08	55.78	12.65	0.49	0.87	36.51	50.39	12.04	0.48	0.52	26.71	52.10	20.66	0.20
Hispanic / Latino	46	0.00	46.67	44.44	8.89	2.17	1.75	45.61	43.86	8.77	0.00	0.81	37.47	50.67	11.05	0.54
American Indian / Alaskan Native	180	0.00	55.11	42.05	2.84	2.22	2.22	62.22	32.22	2.78	1.65	1.07	57.54	36.75	4.64	0.53
Asian	13	0.00	30.77	53.85	15.38	0.00	0.00	16.67	58.33	25.00	0.00	0.63	45.63	30.00	23.75	0.62
Black / African American	11	0.00	54.55	45.45	0.00	0.00						2.53	45.15	37.97	14.35	0.00
Native Hawaiian / Pacific Islander	*											0.00	27.27	36.36	36.36	0.00
White / Caucasian	729	0.55	22.77	60.91	15.78	0.00	0.53	29.16	55.53	14.65	0.13	0.32	20.46	55.41	23.81	0.13
Multi-Racial	46	2.17	50.00	41.30	6.52	0.00	0.00	50.00	43.33	6.67	3.23	2.44	34.15	51.22	12.20	0.00
Student With Disabilities	126	3.17	73.02	13.49	10.32	0.00	4.42	66.37	20.35	7.96	0.88	2.81	66.52	21.79	8.88	0.44
English Language Learners	*											2.73	73.64	20.91	2.73	0.30
Economically Disadvantaged	450	1.12	44.07	49.66	5.15	0.67	1.53	54.68	39.65	3.92	0.65	0.92	40.37	47.31	11.39	0.20
Female	470	0.64	28.48	58.46	12.42	0.64	0.40	37.88	50.50	11.22	0.40	0.43	25.03	54.67	19.86	0.17
Male	555	0.36	33.27	53.53	12.84	0.36	1.30	35.25	50.28	12.80	0.56	0.60	28.26	49.74	21.40	0.22
Migrant	*											3.51	71.93	19.30	5.26	0.00
Gap	531	0.95	46.01	47.15	5.89	0.94	1.65	53.58	39.27	5.32	0.73	1.04	42.52	45.36	11.08	0.30
Non-Gap	494	0.00	15.18	64.98	19.84	0.00	0.00	17.65	62.68	19.47	0.20	0.02	11.44	58.62	29.92	0.10

B. Bas = Below Basic, Bas. = Basic, Prof. = Proficient, Adv. = Advanced, N.T. = Not Test

* No data will display at the school or district level if the subgroup does not meet minimum size for reporting purposes.

Rapid City Area 51-4

All Assessed: Math Grade 08



* No bar will display at the school or district level if the subgroup does not meet minimum size for reporting purposes.

Rapid City Area 51-4

All Assessed: Math Grade 08 - Data Matrix

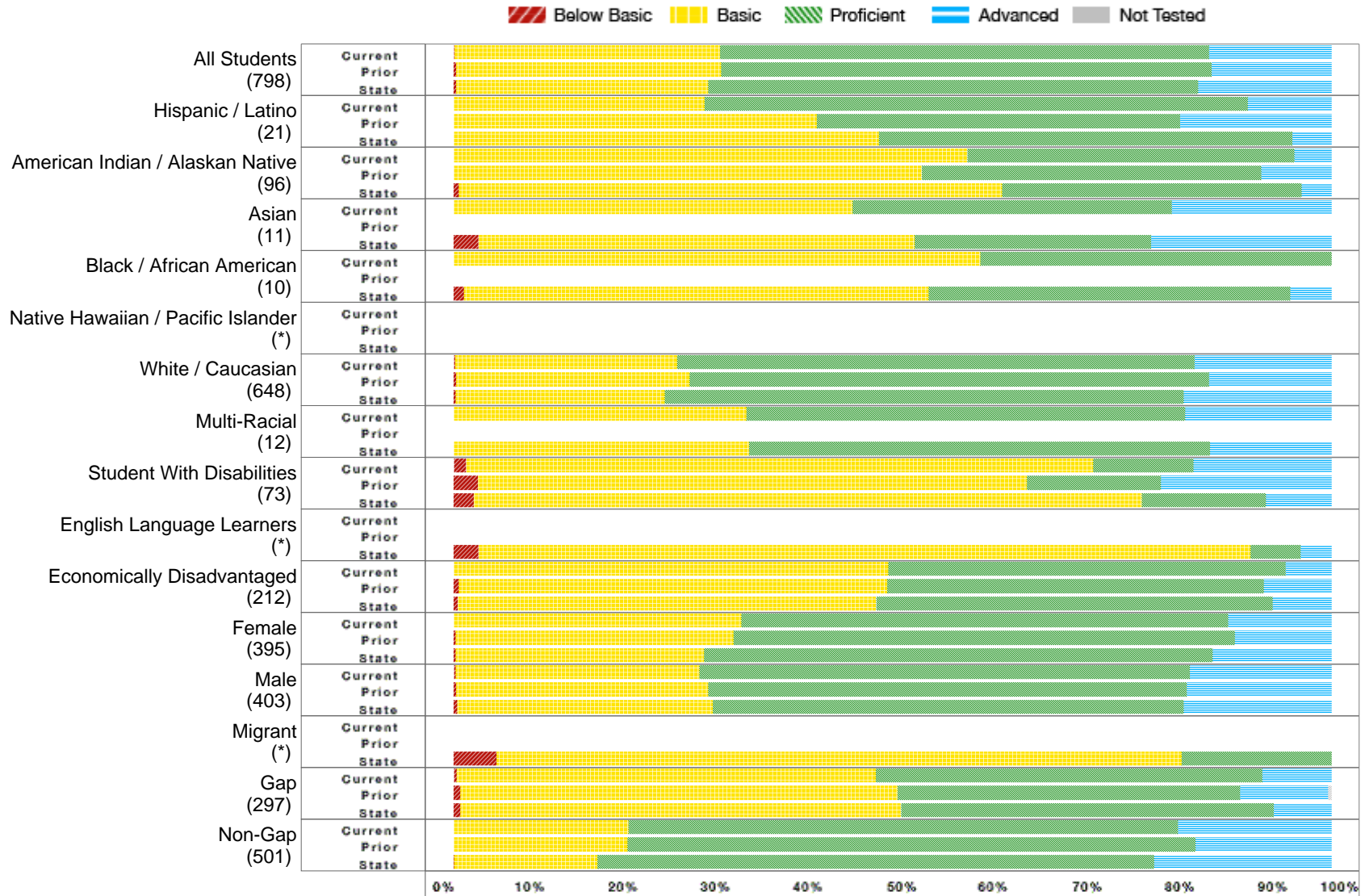
	District Current Year						District Prior Year					State Current Year				
	Number Students	Percent B. Bas	Percent Bas.	Percent Prof.	Percent Adv.	Percent N.T.	Percent B. Bas	Percent Bas.	Percent Prof.	Percent Adv.	Percent N.T.	Percent B. Bas	Percent Bas.	Percent Prof.	Percent Adv.	Percent N.T.
All Students	1040	0.49	35.34	50.29	13.88	0.96	0.20	35.76	50.82	13.11	0.20	0.22	25.93	55.36	18.49	0.39
Hispanic / Latino	57	1.75	49.12	36.84	12.28	0.00	0.00	57.58	36.36	6.06	0.00	1.14	38.00	47.14	13.71	0.85
American Indian / Alaskan Native	173	1.74	61.63	34.30	2.33	0.58	0.00	59.39	36.36	3.64	1.20	0.62	60.69	34.81	3.89	0.96
Asian	*						0.00	20.00	60.00	20.00	0.00	0.00	37.65	39.51	22.84	0.00
Black / African American	12	0.00	16.67	83.33	0.00	0.00	0.00	50.00	35.71	14.29	0.00	0.44	48.00	41.78	9.78	0.00
Native Hawaiian / Pacific Islander	*															
White / Caucasian	751	0.13	27.36	55.66	16.85	1.20	0.13	29.53	54.90	15.44	0.00	0.12	18.84	59.82	21.22	0.29
Multi-Racial	38	0.00	57.89	28.95	13.16	0.00						0.00	40.82	46.26	12.93	0.68
Student With Disabilities	113	1.80	69.37	18.92	9.91	1.77	0.88	72.57	20.35	6.19	0.00	1.34	65.43	24.83	8.40	0.38
English Language Learners	*											1.35	69.02	26.60	3.03	1.33
Economically Disadvantaged	436	0.93	55.09	38.66	5.32	0.92	0.49	50.85	43.07	5.35	0.24	0.35	41.26	48.86	9.53	0.54
Female	496	0.61	35.37	50.61	13.41	0.81	0.21	34.75	52.54	12.29	0.42	0.18	23.68	57.87	18.27	0.44
Male	544	0.37	35.32	50.00	14.31	1.10	0.20	36.71	49.21	13.89	0.00	0.26	28.00	53.06	18.68	0.34
Migrant	*											0.00	67.24	32.76	0.00	0.00
Gap	529	0.95	53.63	38.93	6.49	0.95	0.38	50.67	42.80	5.95	0.38	0.47	42.35	47.36	9.82	0.53
Non-Gap	511	0.00	16.40	62.06	21.54	0.98	0.00	18.68	60.00	21.32	0.00	0.00	11.23	62.52	26.25	0.28

B. Bas = Below Basic, Bas. = Basic, Prof. = Proficient, Adv. = Advanced, N.T. = Not Test

* No data will display at the school or district level if the subgroup does not meet minimum size for reporting purposes.

Rapid City Area 51-4

All Assessed: Math Grade 11



* No bar will display at the school or district level if the subgroup does not meet minimum size for reporting purposes.

Rapid City Area 51-4

All Assessed: Math Grade 11 - Data Matrix

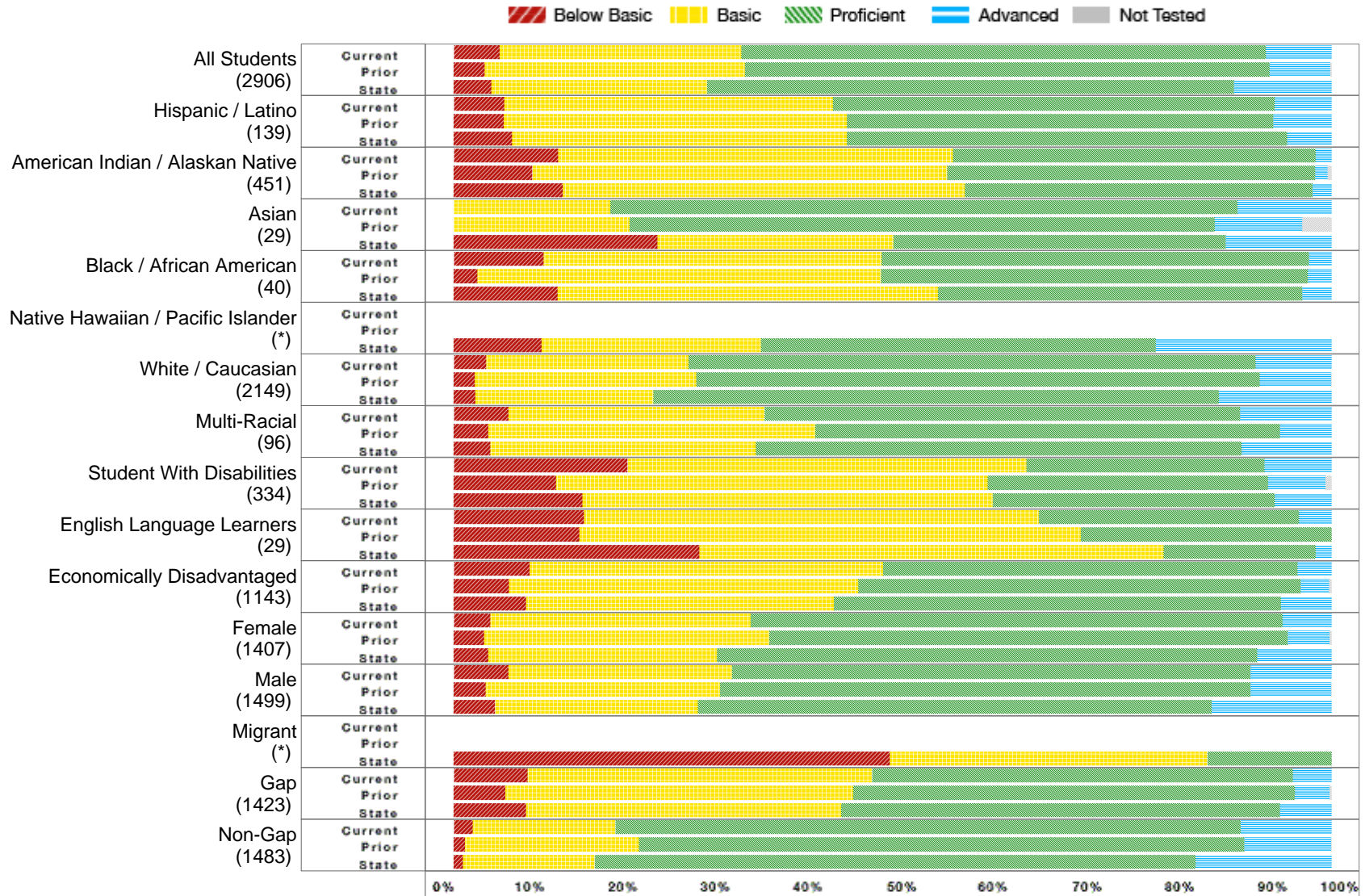
	District Current Year						District Prior Year					State Current Year				
	Number Students	Percent B. Bas	Percent Bas.	Percent Prof.	Percent Adv.	Percent N.T.	Percent B. Bas	Percent Bas.	Percent Prof.	Percent Adv.	Percent N.T.	Percent B. Bas	Percent Bas.	Percent Prof.	Percent Adv.	Percent N.T.
All Students	798	0.13	30.20	55.71	13.96	1.25	0.26	30.23	55.87	13.65	0.76	0.30	28.71	55.78	15.21	1.25
Hispanic / Latino	21	0.00	28.57	61.90	9.52	0.00	0.00	41.38	41.38	17.24	0.00	0.00	48.43	47.09	4.48	1.76
American Indian / Alaskan Native	96	0.00	58.51	37.23	4.26	2.08	0.00	53.33	38.67	8.00	1.32	0.59	61.87	34.12	3.41	4.53
Asian	11	0.00	45.45	36.36	18.18	0.00						2.84	49.65	26.95	20.57	1.40
Black / African American	10	0.00	60.00	40.00	0.00	0.00						1.18	52.94	41.18	4.71	2.30
Native Hawaiian / Pacific Islander	*															
White / Caucasian	648	0.16	25.31	58.91	15.63	1.23	0.30	26.56	59.18	13.96	0.75	0.21	23.82	59.12	16.85	0.89
Multi-Racial	12	0.00	33.33	50.00	16.67	0.00						0.00	33.66	52.48	13.86	0.98
Student With Disabilities	73	1.43	71.43	11.43	15.71	4.11	2.78	62.50	15.28	19.44	0.00	2.26	76.13	14.12	7.49	2.61
English Language Learners	*											2.84	87.94	5.67	3.55	3.42
Economically Disadvantaged	212	0.00	49.52	45.24	5.24	0.94	0.60	48.81	42.86	7.74	1.75	0.46	47.66	45.20	6.68	2.01
Female	395	0.00	32.74	55.50	11.76	1.01	0.25	31.62	57.11	11.03	0.73	0.22	28.29	57.95	13.54	1.15
Male	403	0.25	27.71	55.92	16.12	1.49	0.27	28.72	54.52	16.49	0.79	0.38	29.13	53.63	16.86	1.36
Migrant	*											4.88	78.05	17.07	0.00	2.38
Gap	297	0.34	47.77	43.99	7.90	2.02	0.77	49.81	39.00	10.04	1.15	0.75	50.21	42.45	6.59	2.24
Non-Gap	501	0.00	19.92	62.58	17.51	0.80	0.00	19.80	64.71	15.49	0.39	0.04	16.31	63.47	20.19	0.68

B. Bas = Below Basic, Bas. = Basic, Prof. = Proficient, Adv. = Advanced, N.T. = Not Test

* No data will display at the school or district level if the subgroup does not meet minimum size for reporting purposes.

Rapid City Area 51-4

All Assessed: Science All Grades



* No bar will display at the school or district level if the subgroup does not meet minimum size for reporting purposes.

Rapid City Area 51-4

All Assessed: Science All Grades - Data Matrix

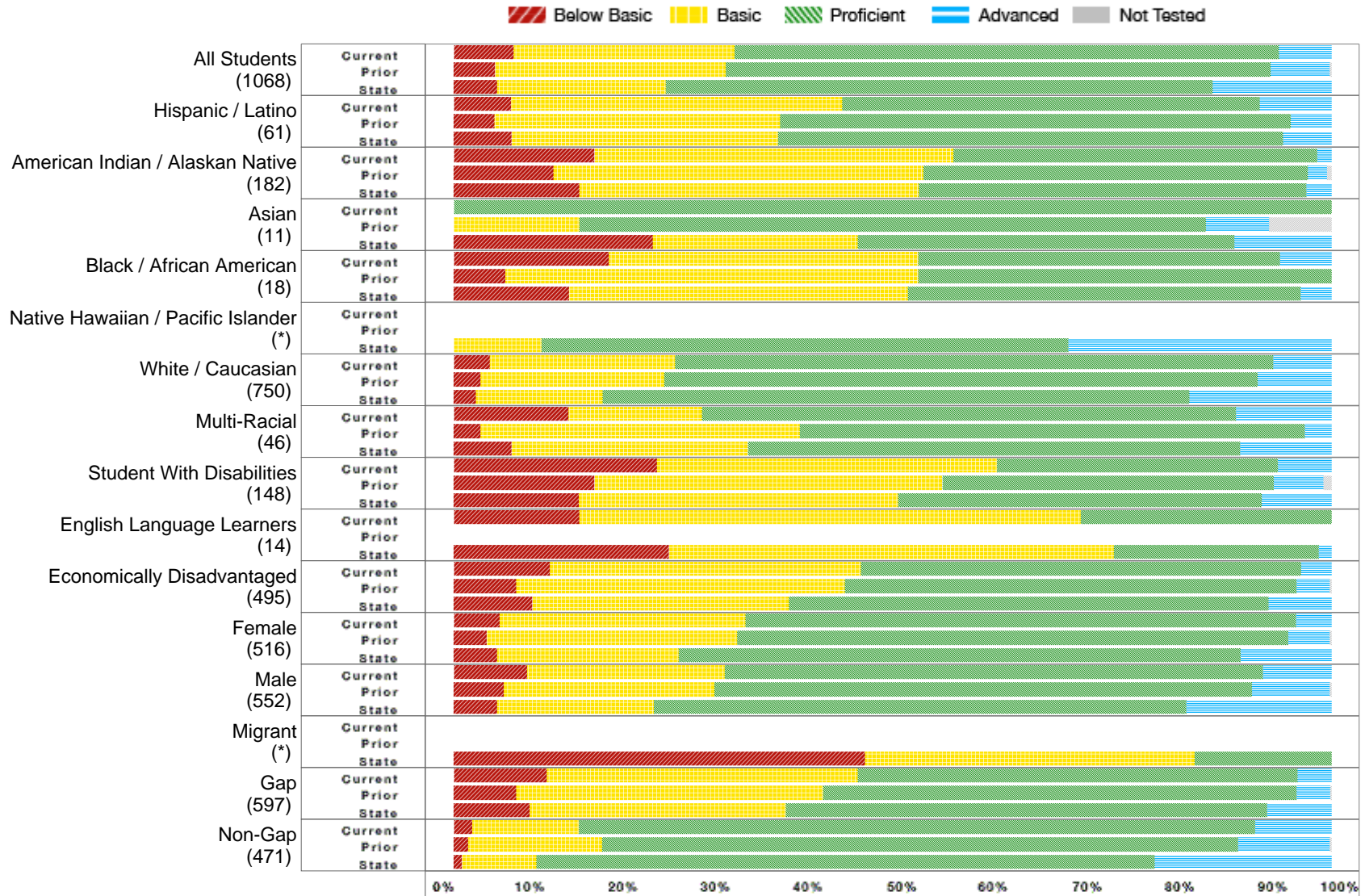
	District Current Year						District Prior Year					State Current Year				
	Number Students	Percent B. Bas.	Percent Bas.	Percent Prof.	Percent Adv.	Percent N.T.	Percent B. Bas.	Percent Bas.	Percent Prof.	Percent Adv.	Percent N.T.	Percent B. Bas.	Percent Bas.	Percent Prof.	Percent Adv.	Percent N.T.
All Students	2906	5.21	27.52	59.80	7.47	0.96	3.54	29.64	59.74	6.93	0.40	4.32	24.56	60.00	11.12	0.63
Hispanic / Latino	139	5.76	37.41	50.36	6.47	0.00	5.71	39.05	48.57	6.67	0.00	6.62	38.17	50.16	5.05	0.83
American Indian / Alaskan Native	451	11.91	44.94	41.35	1.80	1.33	8.94	47.29	41.88	1.41	0.94	12.43	45.80	39.57	2.20	1.71
Asian	29	0.00	17.86	71.43	10.71	3.45	0.00	20.00	66.67	10.00	3.33	23.23	26.88	37.85	12.04	0.64
Black / African American	40	10.26	38.46	48.72	2.56	2.50	2.70	45.95	48.65	2.70	0.00	11.86	43.27	41.51	3.37	0.64
Native Hawaiian / Pacific Islander	*											10.00	25.00	45.00	20.00	0.00
White / Caucasian	2149	3.71	23.06	64.58	8.64	0.93	2.39	25.24	64.20	8.13	0.29	2.45	20.28	64.42	12.85	0.47
Multi-Racial	96	6.25	29.17	54.17	10.42	0.00	3.92	37.25	52.94	5.88	0.00	4.19	30.23	55.35	10.23	0.46
Student With Disabilities	334	19.82	45.43	27.13	7.62	1.80	11.68	49.14	31.96	6.53	0.69	14.64	46.74	32.13	6.48	0.90
English Language Learners	29	14.81	51.85	29.63	3.70	6.90	14.29	57.14	28.57	0.00	0.00	27.97	52.87	17.37	1.79	1.51
Economically Disadvantaged	1143	8.65	40.25	47.22	3.88	0.87	6.32	39.79	50.39	3.21	0.58	8.22	35.07	50.94	5.77	0.81
Female	1407	4.15	29.66	60.60	5.59	0.78	3.47	32.49	59.06	4.77	0.50	3.93	26.04	61.58	8.45	0.61
Male	1499	6.21	25.51	59.04	9.24	1.13	3.62	26.72	60.44	9.15	0.29	4.69	23.15	58.50	13.66	0.65
Migrant	*											49.69	36.20	14.11	0.00	0.61
Gap	1423	8.40	39.29	47.90	4.41	1.26	5.88	39.59	50.38	3.92	0.53	8.24	35.91	49.98	5.88	0.91
Non-Gap	1483	2.17	16.29	71.15	10.39	0.67	1.29	19.83	68.93	9.88	0.21	1.03	15.04	68.41	15.51	0.40

B. Bas = Below Basic, Bas. = Basic, Prof. = Proficient, Adv. = Advanced, N.T. = Not Test

* No data will display at the school or district level if the subgroup does not meet minimum size for reporting purposes.

Rapid City Area 51-4

All Assessed: Science Grade 05



* No bar will display at the school or district level if the subgroup does not meet minimum size for reporting purposes.

Rapid City Area 51-4

All Assessed: Science Grade 05 - Data Matrix

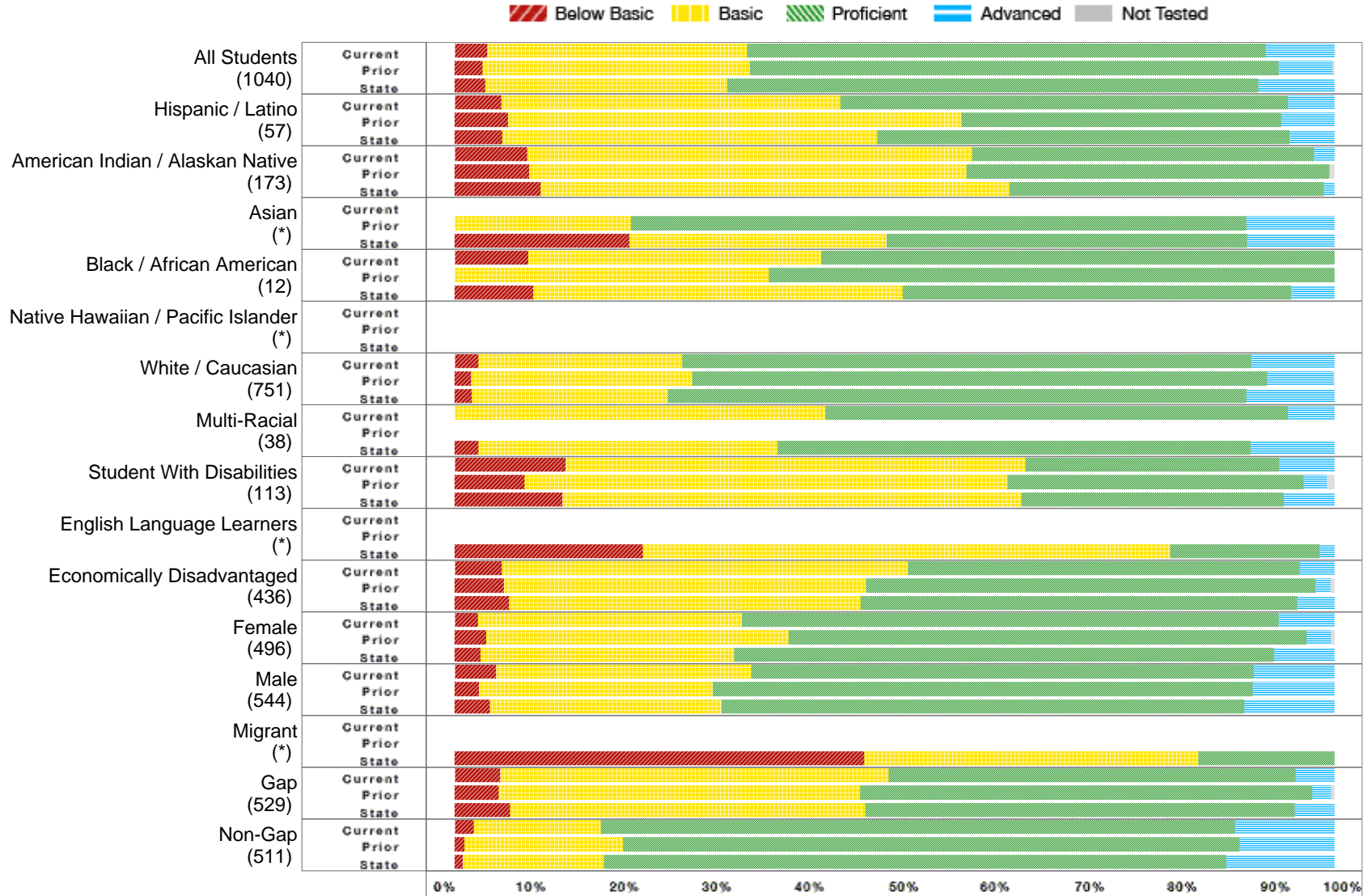
	District Current Year						District Prior Year					State Current Year				
	Number Students	Percent B. Bas	Percent Bas.	Percent Prof.	Percent Adv.	Percent N.T.	Percent B. Bas	Percent Bas.	Percent Prof.	Percent Adv.	Percent N.T.	Percent B. Bas	Percent Bas.	Percent Prof.	Percent Adv.	Percent N.T.
All Students	1068	6.85	25.14	62.01	6.00	0.19	4.69	26.33	62.04	6.73	0.20	4.93	19.24	62.31	13.52	0.18
Hispanic / Latino	61	6.56	37.70	47.54	8.20	0.00	4.65	32.56	58.14	4.65	0.00	6.60	30.34	57.52	5.54	0.00
American Indian / Alaskan Native	182	16.02	40.88	41.44	1.66	0.55	11.35	42.16	43.78	2.16	0.54	14.32	38.64	44.16	2.88	0.32
Asian	11	0.00	0.00	100.00	0.00	0.00	0.00	14.29	71.43	7.14	7.14	22.70	23.31	42.94	11.04	0.00
Black / African American	18	17.65	35.29	41.18	5.88	5.56	5.88	47.06	47.06	0.00	0.00	13.16	38.60	44.74	3.51	0.44
Native Hawaiian / Pacific Islander	*											0.00	10.00	60.00	30.00	0.00
White / Caucasian	750	4.13	21.07	68.13	6.67	0.00	3.05	20.93	67.59	8.43	0.00	2.54	14.43	66.84	16.20	0.17
Multi-Racial	46	13.04	15.22	60.87	10.87	0.00	3.03	36.36	57.58	3.03	0.00	6.59	26.92	56.04	10.44	0.00
Student With Disabilities	148	23.13	38.78	31.97	6.12	0.68	16.04	39.62	37.74	5.66	0.94	14.25	36.38	41.41	7.95	0.30
English Language Learners	14	14.29	57.14	28.57	0.00	0.00						24.50	50.72	23.34	1.44	0.29
Economically Disadvantaged	495	10.93	35.43	50.20	3.44	0.20	7.13	37.42	51.45	3.79	0.22	8.92	29.24	54.66	7.18	0.24
Female	516	5.24	27.96	62.72	4.08	0.19	3.76	28.51	62.77	4.75	0.20	4.91	20.70	64.03	10.36	0.15
Male	552	8.35	22.50	61.34	7.80	0.18	5.68	24.00	61.26	8.84	0.21	4.95	17.84	60.67	16.54	0.21
Migrant	*											46.88	37.50	15.63	0.00	0.00
Gap	597	10.59	35.46	50.08	3.87	0.34	7.13	34.92	53.93	3.84	0.18	8.64	29.18	54.80	7.38	0.22
Non-Gap	471	2.12	12.10	77.07	8.70	0.00	1.62	15.28	72.45	10.42	0.23	0.92	8.49	70.43	20.16	0.13

B. Bas = Below Basic, Bas. = Basic, Prof. = Proficient, Adv. = Advanced, N.T. = Not Test

* No data will display at the school or district level if the subgroup does not meet minimum size for reporting purposes.

Rapid City Area 51-4

All Assessed: Science Grade 08



* No bar will display at the school or district level if the subgroup does not meet minimum size for reporting purposes.

Rapid City Area 51-4

All Assessed: Science Grade 08 - Data Matrix

	District Current Year						District Prior Year					State Current Year				
	Number Students	Percent B. Bas	Percent Bas.	Percent Prof.	Percent Adv.	Percent N.T.	Percent B. Bas	Percent Bas.	Percent Prof.	Percent Adv.	Percent N.T.	Percent B. Bas	Percent Bas.	Percent Prof.	Percent Adv.	Percent N.T.
All Students	1040	3.71	29.49	58.98	7.81	1.54	3.18	30.33	60.14	6.15	0.31	3.47	27.55	60.36	8.63	0.49
Hispanic / Latino	57	5.26	38.60	50.88	5.26	0.00	6.06	51.52	36.36	6.06	0.00	5.43	42.57	46.86	5.14	0.85
American Indian / Alaskan Native	173	8.24	50.59	38.82	2.35	1.73	8.48	49.70	41.21	0.00	1.20	9.74	53.32	35.70	1.24	1.22
Asian	*						0.00	20.00	70.00	10.00	0.00	19.88	29.19	40.99	9.94	0.62
Black / African American	12	8.33	33.33	58.33	0.00	0.00	0.00	35.71	64.29	0.00	0.00	8.93	41.96	44.20	4.91	0.44
Native Hawaiian / Pacific Islander	*															
White / Caucasian	751	2.71	23.14	64.68	9.47	1.60	1.88	25.10	65.37	7.52	0.13	1.91	22.31	65.80	9.99	0.36
Multi-Racial	38	0.00	42.11	52.63	5.26	0.00						2.72	34.01	53.74	9.52	0.68
Student With Disabilities	113	12.61	52.25	28.83	6.31	1.77	7.96	54.87	33.63	2.65	0.88	12.24	52.20	29.83	5.74	0.48
English Language Learners	*											21.36	60.00	16.95	1.69	1.99
Economically Disadvantaged	436	5.36	46.15	44.52	3.96	1.61	5.60	41.12	51.09	1.70	0.49	6.17	39.98	49.61	4.23	0.64
Female	496	2.65	30.00	61.02	6.33	1.21	3.60	34.32	58.90	2.75	0.63	2.92	28.85	61.37	6.87	0.53
Male	544	4.68	29.03	57.12	9.18	1.84	2.78	26.59	61.31	9.33	0.00	3.98	26.35	59.43	10.24	0.46
Migrant	*											46.55	37.93	15.52	0.00	0.00
Gap	529	5.20	44.12	46.24	4.43	1.89	4.99	41.07	51.44	2.11	0.57	6.29	40.40	48.80	4.50	0.69
Non-Gap	511	2.18	14.46	72.08	11.29	1.17	1.10	18.02	70.11	10.77	0.00	0.94	16.05	70.69	12.32	0.34

B. Bas = Below Basic, Bas. = Basic, Prof. = Proficient, Adv. = Advanced, N.T. = Not Test

* No data will display at the school or district level if the subgroup does not meet minimum size for reporting purposes.

Rapid City Area 51-4

All Assessed: Science Grade 11



* No bar will display at the school or district level if the subgroup does not meet minimum size for reporting purposes.

Rapid City Area 51-4

All Assessed: Science Grade 11 - Data Matrix

	District Current Year						District Prior Year					State Current Year				
	Number Students	Percent B. Bas	Percent Bas.	Percent Prof.	Percent Adv.	Percent N.T.	Percent B. Bas	Percent Bas.	Percent Prof.	Percent Adv.	Percent N.T.	Percent B. Bas	Percent Bas.	Percent Prof.	Percent Adv.	Percent N.T.
All Students	798	4.95	28.17	57.87	9.01	1.25	2.55	32.91	56.38	8.16	0.76	4.58	27.21	56.99	11.22	1.29
Hispanic / Latino	21	4.76	33.33	57.14	4.76	0.00	6.90	34.48	48.28	10.34	0.00	8.56	44.59	42.79	4.05	2.20
American Indian / Alaskan Native	96	10.64	42.55	45.74	1.06	2.08	4.00	54.67	38.67	2.67	1.32	13.41	46.50	37.56	2.53	4.96
Asian	11	0.00	27.27	54.55	18.18	0.00						27.66	28.37	28.37	15.60	1.40
Black / African American	10	0.00	50.00	50.00	0.00	0.00						13.95	51.16	33.72	1.16	1.15
Native Hawaiian / Pacific Islander	*															
White / Caucasian	648	4.38	25.31	60.31	10.00	1.23	2.28	29.89	59.33	8.50	0.75	2.95	24.16	60.45	12.44	0.90
Multi-Racial	12	0.00	41.67	33.33	25.00	0.00						1.98	30.69	56.44	10.89	0.98
Student With Disabilities	73	24.29	48.57	14.29	12.86	4.11	11.11	54.17	20.83	13.89	0.00	18.93	58.19	18.08	4.80	2.61
English Language Learners	*											50.35	43.26	3.55	2.84	3.42
Economically Disadvantaged	212	10.00	39.52	45.71	4.76	0.94	5.95	42.86	45.83	5.36	1.75	10.20	37.48	46.59	5.73	2.05
Female	395	4.60	31.46	57.29	6.65	1.01	2.94	35.29	54.66	7.11	0.73	3.94	28.93	59.09	8.04	1.19
Male	403	5.29	24.94	58.44	11.34	1.49	2.13	30.32	58.24	9.31	0.79	5.22	25.51	54.91	14.36	1.39
Migrant	*											58.54	31.71	9.76	0.00	2.38
Gap	297	9.62	38.49	46.39	5.50	2.02	5.04	46.51	40.70	7.75	1.15	10.43	40.18	43.92	5.48	2.31
Non-Gap	501	2.21	22.13	64.59	11.07	0.80	1.18	25.29	64.90	8.63	0.39	1.21	19.74	64.52	14.54	0.69

B. Bas = Below Basic, Bas. = Basic, Prof. = Proficient, Adv. = Advanced, N.T. = Not Test

* No data will display at the school or district level if the subgroup does not meet minimum size for reporting purposes.

Rapid City Area 51-4

NAEP Overview



South Dakota Results for NAEP 2011

The National Assessment of Educational Progress (NAEP) or the "Nation's Report Card" is administered on a biannual basis to a sample of 4th and 8th graders in every state. The most recent NAEP data available are for the 2011 administration. Each student takes a portion of a reading or mathematics assessment. The NAEP results are reported for the state as well as the nation and there are no published school or district results.

For some small subgroups in South Dakota the reporting requirement is not met and therefore no data are available. Therefore, race/ethnicity and Limited English Proficiency data are not consistent across all the reports. .

NAEP achievement levels are not necessarily equivalent to proficiency levels used with South Dakota's state assessment, DSTEP. For more information on the mathematics and reading achievement levels go to:

Participation Rates

Participation rates for Students with Disabilities and Limited English Proficient can be found in the table below. The actual participation rates for NAEP will differ from DSTEP rates since NAEP does not allow the all the accommodations used by DSTEP. Students taking DSTEP-A do not participate in NAEP.

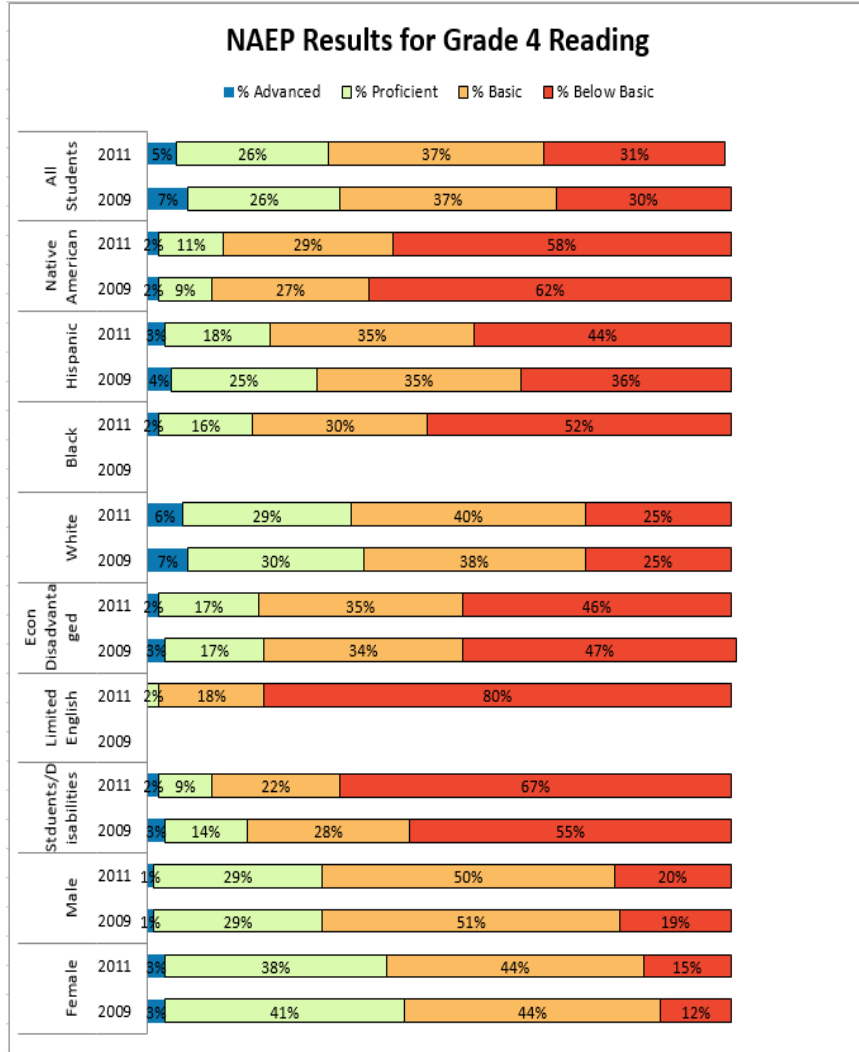
<u>Students with Disabilities</u>	<u>Reading</u>	<u>Mathematics</u>
Grade 4	82%	89%
Grade 8	75%	88%

<u>Limited English Proficient</u>	<u>Reading</u>	<u>Mathematics</u>
Grade 4	87%	97%
Grade 8	71%	80%

Note: If there are questions about the NAEP data reported below, contact the South Dakota NAEP State Coordinator, Jan Martin at: jan.martin@state.sd.us

Rapid City Area 51-4

NAEP Performance - Grade 4



Rapid City Area 51-4

NAEP Performance - Grade 8

