

ALL YOU NEED TO KNOW: WIDA EL Assessments

INSIDE THIS ISSUE:

- About WIDA EL Assessments
- What are my responsibilities?
- What resources are available?
- FAQs
- Reminders & Announcements

About WIDA EL Assessments

What is WIDA?

WIDA stands for World-Class Instructional Design and Assessment. The WIDA consortium is a group of states dedicated to the design and implementation of high standards and equitable educational opportunities for English learners. **South Dakota** is one out of 39 states that belongs to the WIDA Consortium. The WIDA Consortium provides **South Dakota** with English language proficiency assessments for student in grades K-12, professional development opportunities, and English language proficiency standards.



ACCESS for ELLs 2.0 is a secure, large-scale English language proficiency assessment administered to KG through 12th grade students who have been identified as English learners. The assessment is given annually to monitor students' progress in acquiring academic English language

proficiency. The ACCESS for ELLs 2.0 assessments are aligned to the WIDA English Language Development Standards and assess students' proficiency in four domains: listening, speaking, reading, and writing.

What are my responsibilities?

Now is the time to start thinking about getting your training completed. In this section we will highlight important responsibilities, training requirements, and technology information.

What do I need to do?

- Ensure my students are properly identified in Infinite Campus
- Review the [State checklist](#)

- Verify that your [WIDA](#) and [WIDA AMS](#) accounts are active and up-to-date
- Complete tutorials and quizzes

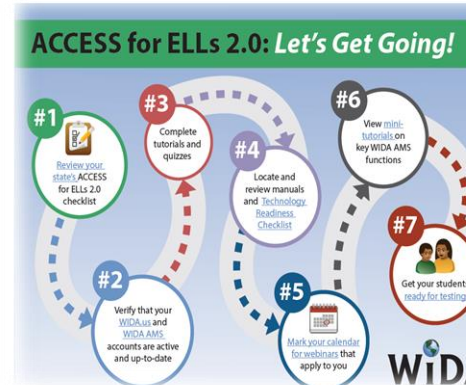
What are my responsibilities continued...

-Locate and review [manuals](#) and [Technology Readiness Checklist](#)

-Mark your calendar for [webinars](#) that apply to you

-View mini-tutorials on key WIDA AMS functions

-[Get your students ready for testing](#)



"Before anything else, preparation is the key to success."

What are my responsibilities continued...

What training do I need to complete?

SD DOE is recommending that **all** quizzes and tutorials are completed on an **annual basis**.

[WIDA Training Course](#)



What resources are available to me?

WIDA offers the following resources for educators:

SD checklist: checklist contains state-specific information about who should complete which steps before, during, and after testing

WIDA Training Course: Tutorials within the training course focus on topics for each assessment

Manuals: comprehensive reference guides

Webinars: Webinars include a presentation and time for questions. They cover a range of topics

FAQs

I completed my training last year; do I have to complete it again for school year 2017-2018?

SDDOE is recommending that all quizzes and tutorials are completed on an annual basis.

Who determines whether my district or school administers the

online or the paper-based test for Grades 1-12?

The expectation of SDDOE is that all EL students participate in ACCESS 2.0 Online unless the Colony Schools do not have internet access. Exceptions are only for students on an IEP/504 plan needing a paper accommodation

How long do trainings take?

Online Grades 1-12: 2.5-3 hours

Paper Grades 1-12: 2-2.5 hours for Listening, Reading and Writing only*

KG: 2-2.5 hours

Alternate: 1.5-2 hours

November WIDA Webinars!

Tech Coordinators

When: November 9

Time: 1-2 pm (CT)

Technology Coordinator Support for Test Administration

[Join Now](#)

Test Coordinators

When: November 15

Time: 11-12 pm (CT)

Managing Students

[Join Now](#)



Reminders and Announcements

Technology Support:

This would be a good time to start getting technology downloaded and ready to go!

For technology help and support please call DRC at 855.787.9615

Also, you can visit the Technology page on the [WIDA website](#).

ACCESS for ELLs 2.0 Roadshow! SAVE THE DATE!

January 16- Pierre

January 17- Watertown

January 18- Mitchell

[Register here!](#)

“Everyone smiles in the same language.”

Yutzil Becker
605.773.4698
Yutzil.Becker@state.sd.us

Joe Moran
605.773.3247
Joe.Moran@state.sd.us

[SDDOE EL Assessment Page](#)
[WIDA Website](#)
[WIDA AMS](#)

WIDA is committed to providing resources and support that will enable students to be comfortable with their ACCESS for ELLs 2.0 testing experience. WIDA has created documents and resources to help educators prepare students for testing!

Preparing Students: in this page you will find the following resources

- Advice on how to prepare students for testing both for online and paper
- Online speaking guidance for educators
- How to get students ready for Online testing
- Paper testing preparation (applies to some Colony schools)

Remember it is very important to familiarize students with the online assessment! We hope that you take advantage of these great resources that WIDA has created for you.

