

# New Assessment Coordinator Workshop #1 Overview and Expectations of Required Assessments

August 25, 2020

- Keep yourself muted since we are recording
- Keep your video off unless your presenting (saves bandwidth)
- Questions? Type them in the chat
- Click dots at top and then Exit Full Screen if you want to be able to see the chat and the presentation at the same time.

# Overview of Workshop

- General Testing Expectations
- SD Math and ELA Assessments
- SD Science Assessment
- SD Alternate Assessments
- Accommodations
- ACCESS 2.0
- NAEP
- Home School

- 9-9:15 Welcome and overview
- 9:15-9:35 SD Math, ELA, and Science
- 9:35 – 9:50 Alternate assessments
- 9:50 -10:05 WIDA/ACCESS
- 10:05 – 10:15 NAEP
- 10:15 – 10:30 Accommodations

# First Contacts for Support

- **Jessica Ahlers**– administration of MSAA and Science Alt
- **Beth Schiltz** – Accommodations
- **Yutzil Becker/Amanda Thronson** – EL and ACCESS 2.0
- **Chris Booth** – Science and Science Alt
- **Amanda Thronson** – SD Math & ELA Assessments
- **Amanda Thronson** – Interim & Formative Assessments
- **Chris Booth** – Home School
- **Jennifer Tschetter** – NAEP

# Assessment Overview, Requirements, Laws, and Rules

Matt Gill

# State Testing Law

- **13-3-55. Academic achievement tests.**
- Every public school district shall annually administer the same assessment to all students in grades three to eight, inclusive, and in grade eleven. The assessment shall measure the academic progress of each student. Every public school district shall annually administer to all students in at least two grade levels an achievement test to assess writing skills. The assessment instruments shall be provided by the Department of Education, and the department shall determine the two grade levels to be tested. The tests shall be administered within timelines established by the Department of Education by rules promulgated pursuant to chapter 1-26 starting in the spring of the 2002-2003 school year. Each state-designed test shall be correlated with the state's content standards. The South Dakota Board of Education Standards may promulgate rules pursuant to chapter 1-26 to provide for administration of all assessments.

# Required Tests to meet state and federal requirements

- **ACCESS 2.0 or ACCESS Alt** for English learners in grades K-12 until student reaches proficiency expectation
- Smarter Balanced or MSAA for students in grades 3-8 and 11 for English/language arts and math
- South Dakota Science Assessment or Alt for students in grades 5, 8, and 11



# Key Elements of Assessment Systems

- Security
- Reliability
- Validity

- **Evaluate:**
  1. Instructional Emphasis
  2. Curriculum Breadth & Depth
  3. Breadth & Depth of Standards Covered
- **Equity** – are a specific group of students falling behind?
- Both **state and federal laws** require testing students in English/language arts, mathematics and science to ensure that all students are meeting college/career ready standards by the end of high school.

- Tests are summative and aren't designed to be diagnostic.
- Students with an IEP or 504 plan can have accommodations designed to support the student but not change the test.
- Students with significant cognitive disabilities will take alternate assessments in the content areas.

# Test Windows

- **Math, ELA, Science, & Science Alt:** March 8 - May 7, 2021
- **MSAA:** March 15 - April 30, 2021
- **ACCESS 2.0:** January 25 - February 26, 2021
- **Home School:** March 22 - April 16, 2021
- **NAEP:** January 25-March 19, 2021



Name of Required Assessment	Tested Grade Level	2020-21 Test Window (all dates are tentative)
<b>SD ELA and Math General Education Assessments</b> Subject: English language arts, Math	3-8, 11	March 8 – May 7, 2021
<b>SD ELA and Math Alternate Assessments</b> Subject: English language arts, Math	3-8, 11 Students with most severe cognitive disabilities	March 15 – April 30, 2021
<b>South Dakota Science</b> Subject: Science	5, 8, 11	March 8 – May 7, 2021
<b>South Dakota Science Alt</b> Subject: Science	5, 8, 11 Students with most severe cognitive disabilities	March 8 – May 7, 2021
<b>National Assessment of Educational Progress (NAEP)</b> Subject: Reading, Math, (every other year)	4 and 8	To Be Determined
<b>WIDA EL Assessments (ACCESS)</b> Subject: Reading, Writing, Speaking, and Listening	K-12	Jan. 25 -Feb. 26, 2021
<b>Home School Students</b> Subject: Reading and Math	4, 8, and 11	March 22-April 16, 2021 (state provided assessment)

- SD is not the only state using the tests
- Careful monitoring of students during test sessions can eliminate most issues
- Training is key to maintaining test security.
- Each assessment has different training expectations for staff administering the assessment.
- No personal communication devices can be on a student during a test session including cell phones, personal tablets, iWatches, or other devices that could connect to social media.

# Training Expectations

- Each of the required state assessments has different training expectations based on the nature of the assessment.
- ACCESS 2.0 requires training for test administrators when testing online, for kindergarten, and for ACCESS alternate.
- MSAA training must be completed before test administrators can access the test directions.
- SD math, ELA, and science assessments have training for test administrators available as an online training module. This module is **highly recommended** for all proctors. It is updated annually.

# Training Expectations

- Students and test administrators can use the online practice and training tests to learn about all the different tools and supports in the test interface.
- Numerous tutorials for the components of the Gateway are available to all educators.



# District Responsibility

- 13-3-56.1. Cheating on academic achievement test-- Investigation. If the superintendent of a school district has sufficient evidence that cheating occurred on a state-required academic achievement test, the superintendent of the school district shall investigate the circumstances. For the purposes of this section, cheating is the unauthorized acquiring of knowledge of the achievement test by a student or providing unauthorized access to secure test questions or tampering or altering of student answer sheets by school district personnel.

**Source:** SL 2007, ch 85, § 1.

# District Responsibility

- 13-3-56.2. determination of cheating. Following the investigation, the superintendent shall report the results of the investigation to the secretary of the Department of Education. Upon receiving the report, the secretary shall determine whether the alleged cheating occurred and, if so, if it was severe enough to affect the results of the achievement test. If the secretary finds that the cheating did occur, the affected score sheets may not count and shall be discarded. The secretary shall also determine if the cheating was severe enough to affect the school's adequate yearly progress under the terms of the state accountability system established pursuant to § 13-3-62. If the cheating was severe enough to affect the school's adequate yearly progress, the secretary may determine that the school does not meet adequate yearly progress for that school year. The decision of the secretary regarding adequate yearly progress may be appealed to the South Dakota Board of Education.

# Reporting Security Incidents

- Each test will have a Test Security Log posted at <http://doe.sd.gov/Assessment/>
- Submit to [DOEAssessment@state.sd.us](mailto:DOEAssessment@state.sd.us) as needed with a final log submitted at end of test window
- Follow the security expectations & procedures for SD assessments for **all tests**

# DOE School Visits




- DOE staff will be visiting school districts during the test window to monitor administration and test security practices.
- Evidence of staff training and test monitoring will be collected.
- Criteria for 2021 visits is based on critical issues that emerged in 2019 that impact the reliable and valid administration of tests.
- No more than 72 hours notice will be provided and visits could be surprise visits if administration issues emerge during testing.

# Infinite Campus

- CAMPUS is our source for all testing information
- If a student needs alternate tests and the correct data is not completed, the student won't be in the pre-id file for MSAA
- Student transfers in TIDE take up to 72 hours if all data are correct in TIDE
- **Do not** contact Cambium help desks for missing students
  - Instead, contact [DOEassessment@state.sd.us](mailto:DOEassessment@state.sd.us)

# Infinite Campus

**Type** must be P for a student to be in the appropriate test system!

Enrollment Editor						
Edit	Grade	Type	Calendar (Schedule Name)	Start Date	End Date	
	04	P	Baltic 49-1 17-18 Baltic Elem 4-5 (100%)	08/21/2017		
<i>Start Status: 00 Current Student</i>						
<i>End Status:</i>						
	03	P	Baltic 49-1 16-17 Baltic Elem K-3 (100%)	08/22/2016	05/19/2017	
<i>Start Status: 00 Current Student</i>						
<i>End Status: 11 Student continues</i>						
	02	P	Baltic 49-1 15-16 Baltic Elem K-3 (100%)	08/24/2015	05/20/2016	
<i>Start Status: 00 Current Student</i>						
<i>End Status: 11 Student continues</i>						

# More Reminders

- Students test once – if the student’s IEP indicates alternate assessment, then the student **does not** take SD math, ELA, or Science Assessments.
- The “participate in alt assessment” box must be checked in Campus for students taking alternate assessments.

# English Learners

- Students identified as English learners are required to be assessed to determine progress in acquiring English skills so they can participate with their peers in the general classroom.
- ACCESS 2.0 is the language proficiency test
- Students who are first year in country will not take Smarter Balanced ELA test.



# First Year in Country

- First year in country students are exempt from taking SD ELA Assessment or MSAA.
- Data must be correct in Campus to get credit for being 1<sup>st</sup> year in country.
- Students must take ACCESS 2.0 in place of the SD ELA Assessment
- Students must take Math and Science (gr. 5, 8, 11) in order to be a participant.

# First Year in County cont.

- Math is available in Spanish for Smarter Balanced for 1<sup>st</sup> year in country students.
- Considerations for use:
  - Did the student have significant instructional opportunities in math prior to coming to South Dakota?
  - Can the student read Spanish so that a test in Spanish is a support?
  - Is the student receiving math instruction in Spanish?

# Medical Exemptions

## Rule of Thumb

If the student can receive instruction; the student can participate in the statewide assessment.



# Medical Emergency

In rare instances, a student may be unable to participate in any part of the assessment due to **significant and documented and fully incapacitating medical emergency that extends through the end of each testing window.**

# Examples

- A serious car accident
- Hospitalization
- Severe emotional trauma
- Placement in hospice care
  - Medical emergencies of this kind must be identified and verified in writing by a licensed physician and kept on file by the local district
  - The incident or condition must be so severe as to prevent the student from participating in instruction offered either at school, hospital, or at home through the end of each testing window

## Conditions that **DO NOT** qualify for exemption

- Medical fragility
- District-provided home-based educational programs (student remain enrolled in district)
- Pregnancy
- Students with acute, short-term minor illnesses or injuries
- Students placed in correctional facilities
- Student or parent refusal
- Mental health conditions that permit the students to receive instruction

# Keeping in Touch

- [DOEAassessment@state.sd.us](mailto:DOEAassessment@state.sd.us) is the email to use to send medical exemptions, security logs, requests to add students, appeals, and all other questions regarding test administration if unsure who to contact.
- There will be at least one DOE staff member in the office each day of the test window.
- Email and phone **Out of Office messages** will provide details regarding who to contact if someone is away from the office.

- **TESTING TRANSPARENCY.—**
- (A) IN GENERAL.—At the beginning of each school year, a local educational agency that receives funds under this part shall notify the parents of each student attending any school receiving funds under this part that the parents may request, and the local educational agency will provide the parents on request (and in a timely manner), information regarding any State or local educational agency policy regarding student participation in any assessments mandated by section 1111(b)(2) and by the State or local educational agency, which shall include a policy, procedure, or parental right to opt the child out of such assessment, where applicable.
- At the present time, South Dakota law requires all students participate in required assessments.



- Starting in 2017-18 school year, district and school websites must provide the following state and local assessment information:
  - Subject matter assessed;
  - Purpose for which the assessment is designed and used;
  - Source of the requirement for the assessment; and
  - Where such information is available:
    - Amount of time students will spend taking the assessment, and the schedule for the assessment; and
    - Time and format for disseminating results

- **Families must receive student results as soon as practicably possible.**
- **ACCESS 2.0** reports are sent to districts in May. Reports can be printed in home languages as needed through WIDA AMS.
- **SD Math and ELA Assessment** reports are posted within 3 weeks of test submission. Reports can be provided with final report cards.
- **MSAA** reports are provided to districts in mid-August for download.
- **SDSA & SDSA-Alt** reports will be provided after standards-setting in the summer.

- **Make sure your testing dates are on your website!**

# South Dakota Math and English-Language Arts Assessments

Amanda Thronson

# South Dakota ELA and Math Assessments

- Contained within Cambium's system
  - ELA and Math are in the same system
  - Students automatically loaded/updated from IC
- Grades 3-8 and 11 are tested
- Computer Adaptive
  - Scores are planned to be at discipline level
  - Scores will be available after standard setting next summer

# South Dakota Science Assessment

Chris Booth



# South Dakota Science Assessment

- Contained within Cambium's system
  - ELA, Math, and Science-Alt in same system
  - Students automatically loaded/updated from IC
- Grades 5, 8, and 11 only
  - Standards adopted in 2015
- Computer Adaptive
  - Scores are planned to be at discipline level
  - Scores will be available after standard setting next summer

# Accommodations

Beth Schiltz





# Why do I need to know about supports and accommodations?

- Some need to be enabled in the TIDE system
  - Interim assessments
  - State assessment
- May need to ask more questions
- May need to download additional supports/hardware/software
- May need to know if the request is inappropriate and would affect the student's score

# Is it my responsibility to enable these?

- District decision
  - Every district is different
  - Could be you
  - Could be someone at each building
- District decision

# Who should/could I be working with?

- Gen Ed teachers
- Sped Teachers
- Tech Coordinators

# How do I collect the information needed?

## South Dakota Math and English-Language Arts Assessments

South Dakota is part of the SMARTER Balanced Assessment Consortium, or SBAC. The SBAC is a consortium of states that have been working collaboratively to develop a student assessment system aligned to the Common Core State Standards in English language arts and math. South Dakota is one of 21 governing states, which allows the state decision-making participation. The remaining six are advisory states.

The SBAC focus is on assessing students annually in grades 3-8 and 11. The system includes both summative and interim assessments and will use computer adaptive testing technologies to the greatest extent possible to provide meaningful feedback and actionable data that teachers and other educators can use to help students succeed.

- [South Dakota Interim Assessments](#)
- [Tools for Teachers](#)
- [SD Content Standard Crosswalk Blueprint](#)

+ Assessment Details
+ Technology Documents
+ FAQs: How do I...?
+ Parent Communication
+ What's the Point? - Connections between Assessment, Curriculum, and Instruction
+ Designated Supports and Accommodations Information
+ Useful Links

<https://doe.sd.gov/Assessment/SMARTERbalanced.aspx>



For more information, contact [Amanda Thronson](#) at the Department of Education, (605) 773-3247.

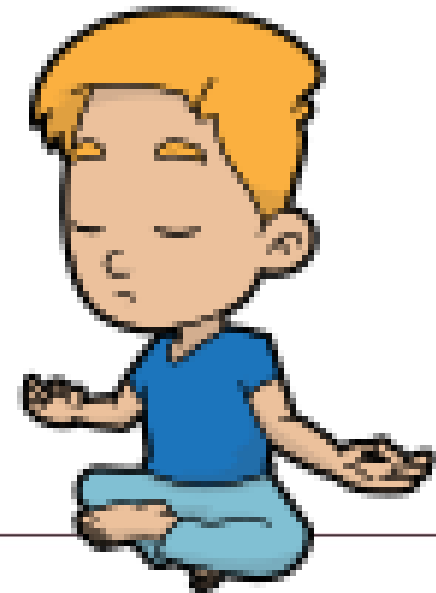
# How do I collect the information needed?

Designated Supports and Accommodations Information	
	<b>Designated Supports and Accommodation Information</b>
1	SD Accommodation Manual
2	South Dakota's Tools, Supports, and Accommodations (SD-TSA)
3	Reading Passages Accommodations
4	Accommodations Summary
5	TIDE Settings Worksheet (updated)
	State Assessment Accommodations Worksheet
	SBAC UAAG Supplement: Language Supports / (pdf)

1. SD TSA
  - large document with all the information
2. Reading Passages Accommodations
  - information about who should get the reading passages
3. Accommodations Summary
  - 1-2 page document outlining accommodations
4. TIDE Settings Worksheet
  - word document to help gather accommodations and supports information from teachers
5. State Assessment Accommodations Worksheet
  - another tool to gather accommodations and supports information (PDS format)

# Now what?

- Join the next webinar to find out what to do with this information
- Join the last webinar to bring those burning questions that you haven't gotten answered yet
- Take a big breath –  
**YOU'VE GOT THIS!**



# South Dakota Alternate Assessments

Jessie Ahlers  
Chris Booth



# SD Alternate Assessments

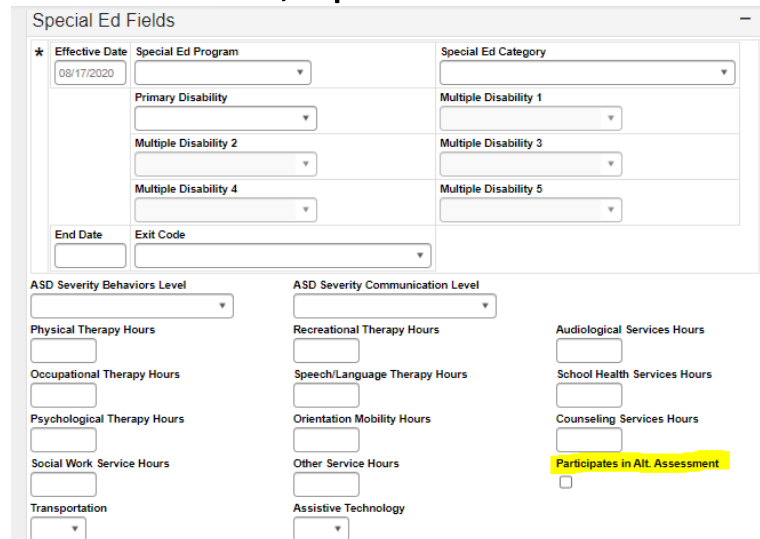
- Test for 1% of students with most severe cognitive disabilities
- In order for a student to qualify for alternate assessment at state and district level, they must meet all three criteria:
  - Student has a disability, or disabilities, that significantly impacts cognitive function and adaptive behavior.
  - The student's instruction is aligned to the South Dakota Content Standards but is adapted to reflect the knowledge and skills in the Core Content Connectors.
  - The student requires extensive direct individualized instruction and substantial supports to achieve measurable gains in the grade-and age appropriate curriculum.

# SD ELA and Math Alternate Assessments

- SD is part of MSAA Consortium
  - Multi-States Alternate Assessment
  - Cognia is the vendor
- Grades 3-8, and 11
- MSAA System not available until a couple weeks before the test window opens
  - 2 Types of accounts: Test Coordinator / Test Administrator
  - SDDOE will ask for each district's test coordinator
    - Usually Assessment Coordinator or SPED Coordinator

# SD ELA and Math Alternate Assessments

- Students loaded from a 1 time pull from Infinite Campus in early December
  - **If students aren't properly marked as taking alternate assessment, they will not be available when system opens**
    - Under Enrollments tab, Special Ed Fields



Special Ed Fields

★ Effective Date: 08/17/2020

Special Ed Program: [Dropdown]

Special Ed Category: [Dropdown]

Primary Disability: [Dropdown]

Multiple Disability 1: [Dropdown]

Multiple Disability 2: [Dropdown]

Multiple Disability 3: [Dropdown]

Multiple Disability 4: [Dropdown]

Multiple Disability 5: [Dropdown]

End Date: [Text]

Exit Code: [Dropdown]

ASD Severity Behaviors Level: [Dropdown]

ASD Severity Communication Level: [Dropdown]

Physical Therapy Hours: [Text]

Occupational Therapy Hours: [Text]

Psychological Therapy Hours: [Text]

Social Work Service Hours: [Text]

Transportation: [Dropdown]

Recreational Therapy Hours: [Text]

Speech/Language Therapy Hours: [Text]

Orientation Mobility Hours: [Text]

Other Service Hours: [Text]

Assistive Technology: [Dropdown]

Audiological Services Hours: [Text]

School Health Services Hours: [Text]

Counseling Services Hours: [Text]

Participates in Alt. Assessment:

- MSAA website should be available soon ([NCSC wiki](#))

# SD Science Assessment Alternate

- Contained within Cambium's system
  - ELA, Math, and Science in same system
  - Students automatically loaded/updated from IC
    - **Must be marked as participating in Alt Assessment**
- Grades 5, 8, and 11 only
  - Core Content Connectors created in 2017 based on standards adopted in 2015 (5<sup>th</sup>, 8<sup>th</sup>, 11<sup>th</sup>)
- Online Administration similar to Science
  - Scores are planned to be at discipline level
  - Scores available after standard setting next summer

# ACCESS Assessment

Amanda Thronson

# ACCESS Assessment

The state requires ELs in Grades 1-12 to be accessed with the ACCESS assessment.

\*Reminder about students who are first year in country.

The ACCESS assessment will address the ELP standards that are a part of the WIDA Consortium.

The ACCESS assessment is completed online.

Accommodations are available as well as an alternate assessment for students who require those.

Paper versions are also available is needed.



The  
Nation's  
Report Card

---

National Assessment of  
Educational Progress

**Jennifer Tschetter, NAEP State Coordinator**  
Department of Education – Office of Assessment  
**605-295-7304    Jennifer.Tschetter@state.sd.us**

# Background of NAEP

- **Origins – 1960s**
  - Carnegie Corporation with Office of Education
  - (1969) national                      - (1990) state
- **Philosophy/Goals**
  1. what students know
  2. what students know how to do
  3. measure progress
- **2001 Elementary and Secondary Education**
  - Title 1 funding requires participation



# Organization of NAEP

- **NAGB – National Assessment Governing Board**
  - 25 members of various backgrounds
  - oversee the framework of the assessments
- **NCES – National Center for Educational Statistics**
  - collect & analyze education info & stats
  - execute the mission/purpose of NAEP
- **Nations Report Card**
  - report results by demographic category
  - jurisdictions, grade, subject

# NAEP Sample

- **Representative**
  - Sample taken, nationally, grades 4 and 8
  - Representative sample is valid and reliable
- **Student Selection**
  - random selection based on grade
  - approx. 4,000 students per grade (under normal conditions)
- Results reported at state level, not district or student level

# NAEP Assessments

- **NAEP Field Staff**
  - administer assessment
  - handle logistics
  - 20,000 schools in 6 weeks
- **Digitally-Based Assessment**
  - Tablets provided by NAEP
  - Universal Design elements
  - types of questions



# Inclusion

## 1. Students w/Disabilities

## 2. English Language Learners

- **South Dakota NAEP**

- English-only
- one day only
- no reference materials
- no rephrasing questions

- **NAEP Accommodations**

- extended time
- breaks
- small group, 1 on 1
- read aloud
- calculator on screen
- vision (zoom, braille)
- on-task cues
- seating
- paraprofessional

# Assessment Frameworks

- Arts
- Civics
- Economics
- Geography
- **Mathematics - 2021**
- **Reading – 2021**
- Science
- Tech. & Eng. Literacy
- U.S. History
- Writing
- **Reading**
  1. literary
  2. informational
- **Mathematics**
  1. numbers
  2. measurement
  3. geometry
  4. data, stats, & prob.
  5. algebra

# Responsibilities/Duties

- **State Coordinator**

1. Manage school data review at State level
2. Provide assistance to schools
3. Monitor NAEP data inputted by schools

- **School Coordinator**

1. Register via MyNAEP
2. Provide school info
3. Prep for assessment
4. Support NAEP
5. Conclude assessment

# 2020-2021 Timeline

- **September**
  - MyNAEP registration, notification if sampled
- **December**
  - Pre-assessment
- **January 25 > March 19**
  - NAEP administered
- **April > May**
  - post-assessment



# Resources/Links

- South Dakota NAEP site

<https://doe.sd.gov/Assessment/NAEP.aspx>

- NAGB – National Assessment Governing Board

<https://www.nagb.gov/content/nagb.html>

- NCES – National Center for Educational Statistics

<https://nces.ed.gov/>

- Nation's Report Card

<https://nces.ed.gov/nationsreportcard/>

- Explore NAEP Assessment Data

- data explorer, questions tool, item maps, state profiles and test yourself

<https://nces.ed.gov/nationsreportcard/data/>



# Home School Testing

(Chris & Matt)

# Home School Testing

- SDCL 13-27-3 requires testing of 4<sup>th</sup>, 8<sup>th</sup>, and 11<sup>th</sup> grade students
- Parents can supply their own test
  - Must be nationally known and standardized
  - Provide results when they submit waiver for next year
- State supplies SAT 10
  - Order what you need in mid-February
  - Parents must pick up *in person* and sign security agreement
  - Test Window is March 22-April 16, 2021
  - Work with DOE to get invoice to ship in to score