

Child & Adult Nutrition Services 2024 Update

Paid Lunch Equity

USDA has released the Paid Lunch Equity (PLE) tool for SY24-25. Schools that had a positive or zero balance in their food service account as of June 30, 2023 are not required to complete the tool or raise their paid student lunch prices. If you qualify for the exemption and would like to raise your prices, you can do so without completing the PLE tool.

iCAN Applications

The deadline for SNP iCAN application approval is August 16, 2024. We are providing open hours through Zoom to answer questions and provide one on one assistance with your application. No reservation is needed, you can join during any open hours times to get instant help from CANS staff

- August 1 – 9am – 11am CT / 8am – 10am MT
- August 6 – 2pm – 4pm CT / 1pm – 3pm MT
- August 21 – 2pm – 4pm CT / 1pm – 3pm MT


Open hours will be held via Zoom at
<https://state-sd.zoom.us/j/96413963678>.

Administrative Reviews for SY24-25

If you are on the list to receive an Administrative Review for SY24-25, you should have received a packet in the mail. This packet will help you get organized and prepared for your review. Included in this packet is a “Summary and Self Evaluation Checklist.” This should be used at least a few months before your review is scheduled – it is a mini review to check on your program. Administrative Reviews will be completed within the iCAN system, rather than on paper. To learn more about the reviews within the system and for assistance completing your offsite assessment. Check out our trainings in the DOE Professional Learning Platform at www.sded.sd.gov.

Net Cash Resources

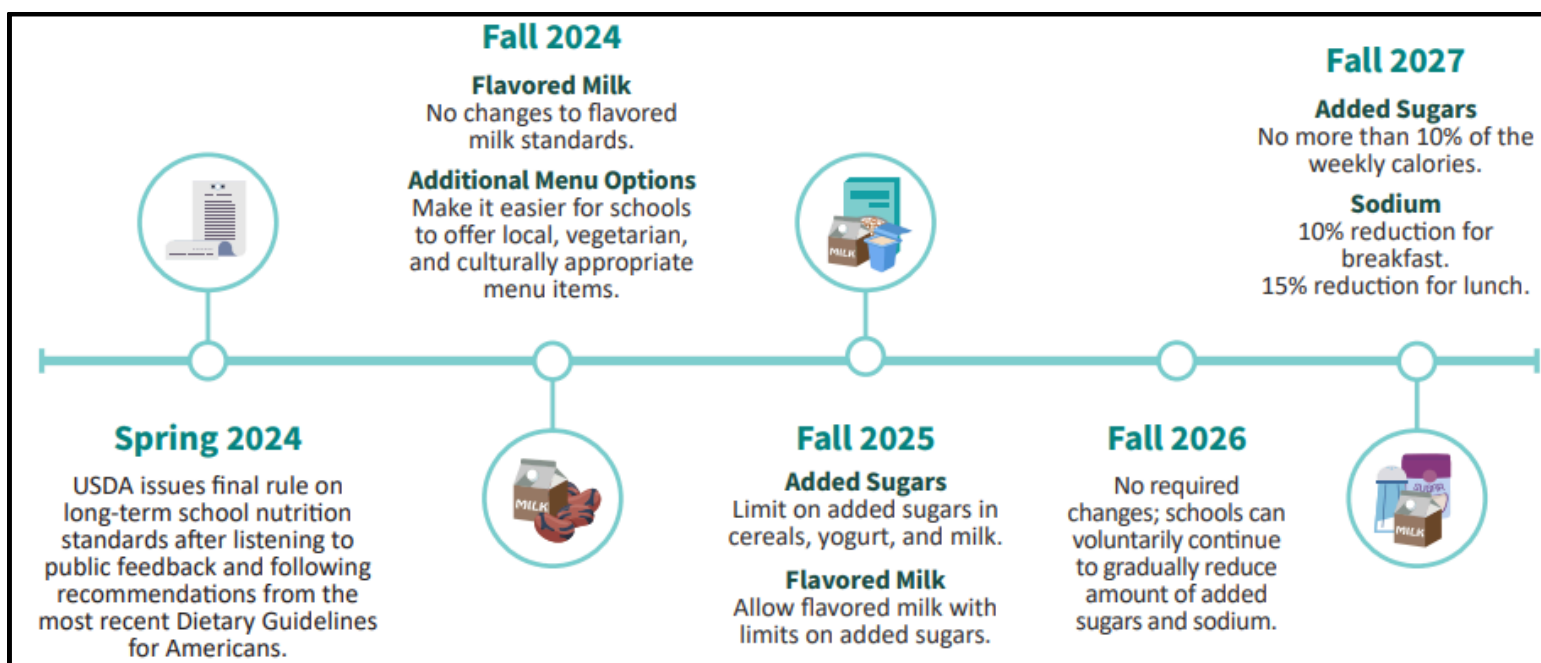
With an increased risk that many CNP operators might exceed the federal program limit on net cash resources, DOE will allow operators to apply for a temporary flexibility of a 2-year spend down plan if they exceed a 5-month net cash resource limit for SY24-25.





Updated Meal Pattern Requirements

USDA’s Food and Nutrition Service (FNS) published the final rule titled, Child Nutrition Programs: Meal Patterns Consistent With the 2020-2025 Dietary Guidelines for Americans, which is the next step in continuing the science-based improvement of school meals and other USDA child nutrition programs (CNP), as well as advancing USDA’s commitment to nutrition security. The changes are based on a comprehensive review of the Dietary Guidelines for Americans, 2020-2025, robust stakeholder input on the CNP meal patterns, and lessons learned from prior rulemakings. While this rulemaking is effective July 1, 2024, USDA is gradually phasing in required changes over time. Program operators are not required to make any changes to their menus as a result of this rulemaking until school year 2025-26 at the earliest.



Point of Service Meal Counting

The National School Lunch Program, National School Breakfast Program, Afterschool Snack Program, and Special Milk Program require meals/snacks/milk to be counted at the Point of Service (POS). Meal counting refers to the process of accurately collecting and maintaining data at the POS to then be able to consolidate meal count totals for reimbursement. Meal counts must be taken by site and LEAs must have a meal counting system that consistently yields accurate claims. There are limited exceptions to this rule and any Alternate Point of Service system must be approved by CANS prior to implementation.





SY 24-25 Reimbursement Rates

On July 10, 2024, USDA released the School Nutrition Programs reimbursement rates for breakfast and lunch and the per meal rate for USDA foods. These rates are effective from July 1, 2024–June 30, 2025.

Lunch		
	< 60%	60% or more
Paid	\$0.51	\$0.53
Reduced	\$4.12	\$4.14
Free	\$4.52	\$4.54

Breakfast		
	Non-Severe Need	Severe Need
Paid	\$0.39	\$0.39
Reduced	\$2.07	\$2.54
Free	\$2.37	\$2.84

Student Eligibility – Prep for Success!

Communicate with families early and frequently to ensure they are aware of the household application by distributing parent packets. Utilize various methods to spread the word, including back-to-school bulletins, open houses, social media, and other channels. Highlight the importance of returning these eligibility applications to benefit from free or reduced school meals.

The iMATCH Direct Certification System is up and running for School Year 2024-2025. See a starting list prior to the official start of the school year by taking the following steps in the system:

Click **Student Eligibility, Administration, DC Matching, Matched tab.**

Then, select **Active** and **Inactive** and uncheck **'Exclude' checkboxes** and click **"Apply"**

*Students will be displayed as 'inactive' until your school year begins

Households of students directly certified in the iMATCH system do not need to complete a household application. Please note: Your starting list may include students that had previously left the district and are no longer enrolled. This will be updated in your list once the school year officially begins.

Remember to update the school's eligibility roster and point of service system and extend the direct certification SNAP/TANF free meal benefits to other students within the household.



Child and Adult Nutrition Services Division

800 Governors Drive, Pierre, SD 57501-2235

Main Phone 605-773-3413; Fax Number 605-773-6139

Group Email Boxes: doe.schoollunch@state.sd.us; doe.icanhelp@state.sd.us

Name	Programs/Responsibilities	Email (@state.sd.us)	Phone (605)	Location
Cheriee Watterson, Division Director	Division and USDA Program Management	Cheriee.Watterson	773-4746 Cell: 295-1645	Pierre
Darian Schaefer, Senior Secretary	CANS Main Phone; iCAN User Requests; Food Distribution Invoices	Darian.Schaefer	773-3413	Pierre
Christina Lusk, Program Director	USDA Foods in Schools; The Emergency Food Assistance Program; Commodity Supplemental Food Program; iCAN System	Christina.Lusk	773-6157 Cell: 280-2581	Pierre
Mikayla Hardy, RDN, LN, Program Director	School Nutrition Program; Child and Adult Care Food Program; Summer Food Service Program; Fresh Fruit & Vegetable Program	Mikayla.Hardy	773-2213 Cell: 280-7137	Pierre
Jordan Schumacher, Assistant Program Director	Child & Adult Care Food Program; Summer Food Service Program; School Nutrition Program Support	Jordan.Schumacher	Cell: 295-0787	Sioux Falls
Andrea Theilen, Assistant Program Director	School Nutrition Program (Admin Reviews, Special Provisions, Afterschool Snack); iCAN System; Child and Adult Care Food Program	Andrea.Theilen	773-8067 Cell: 295-8060	Pierre
Courtney Martin, Program Assistant	The Emergency Food Assistance Program; Food Distribution Program; iCAN New Sponsors & Updates	Courtney.Martin	773-4353	Pierre
Vacant, Program Specialist	Summer Food Service Program; Child and Adult Care Food Program			
Darcy Beougher, Program Specialist	Food Distribution Program in Schools (Net Off Invoice, Fee for Service, DoD Fresh FFAVORS); Commodity Supplemental Food Program	Darcy.Beougher	773-4673	Pierre
Diana Webb, Program Specialist	School Nutrition Program (Verification, Special Provisions; Special Milk Program; Fresh Fruit & Veg Program)	Diana.Webb	773-6026	Pierre
Jaynie Spier, Program Specialist	Child and Adult Care Food Program; Summer Food Service Program	Jaynie.Spier	Cell: 280-4623	Sioux Falls
Susan Goeden, Program Specialist	School Nutrition Program (Seamless Summer Option, Food Safety/Health Inspections, Civil Rights); Farm to Table/School	Susan.Goeden	Cell: 280-2697	Yankton
Kristine Thompson, Program Specialist	The Emergency Food Assistance Program	Kristine.Thompson	773-4736	Pierre
Melissa Cuka, Program Specialist	School Nutrition Program (Admin Reviews, SBP promotion, Verification, iMATCH)	Melissa.Cuka	Cell: 280-8707	Yankton
Quanna Keyser, Program Specialist	Food Service Management Company Contracts; Federal Procurement: All Child Nutrition Prog; Child & Adult Care Food Prog; Summer Food Service Prog.	Quanna.Keyser	773-3110	Sturgis
Diana Leiseth, Program Specialist	School Nutrition Prog (iMATCH, Wellness, Resource Management, Equipment Grants); Fresh Fruit & Vegetable Prog, Summer Food Service Prog	Diana.Leiseth	773-2977	Pierre
Janelle Peterson, Program Specialist	Farm to Child Nutrition Program	Janelle.Peterson	679-6788	Dell Rapids
Stacey Booth, Grants Management Program Specialist	Claims for Reimbursement: All Child Nutrition Program & FFVP; Financial Statements; Budgets; Audits; Operating Statements	Stacey.Booth	773-3456	Pierre