

The  Credential  
*in South Dakota*



# Preparation and Testing Centers



*\*Not all Test Prep locations also support Official Testing. Some locations are only open to current students enrolled in the provider's program. To view details about what is available at each center click [HERE](#).*

# WHO IS TAKING THE GED® ?

## Adult Education and Literacy

- DLR Supported Programs
- State Corrections

## Tribal Programs

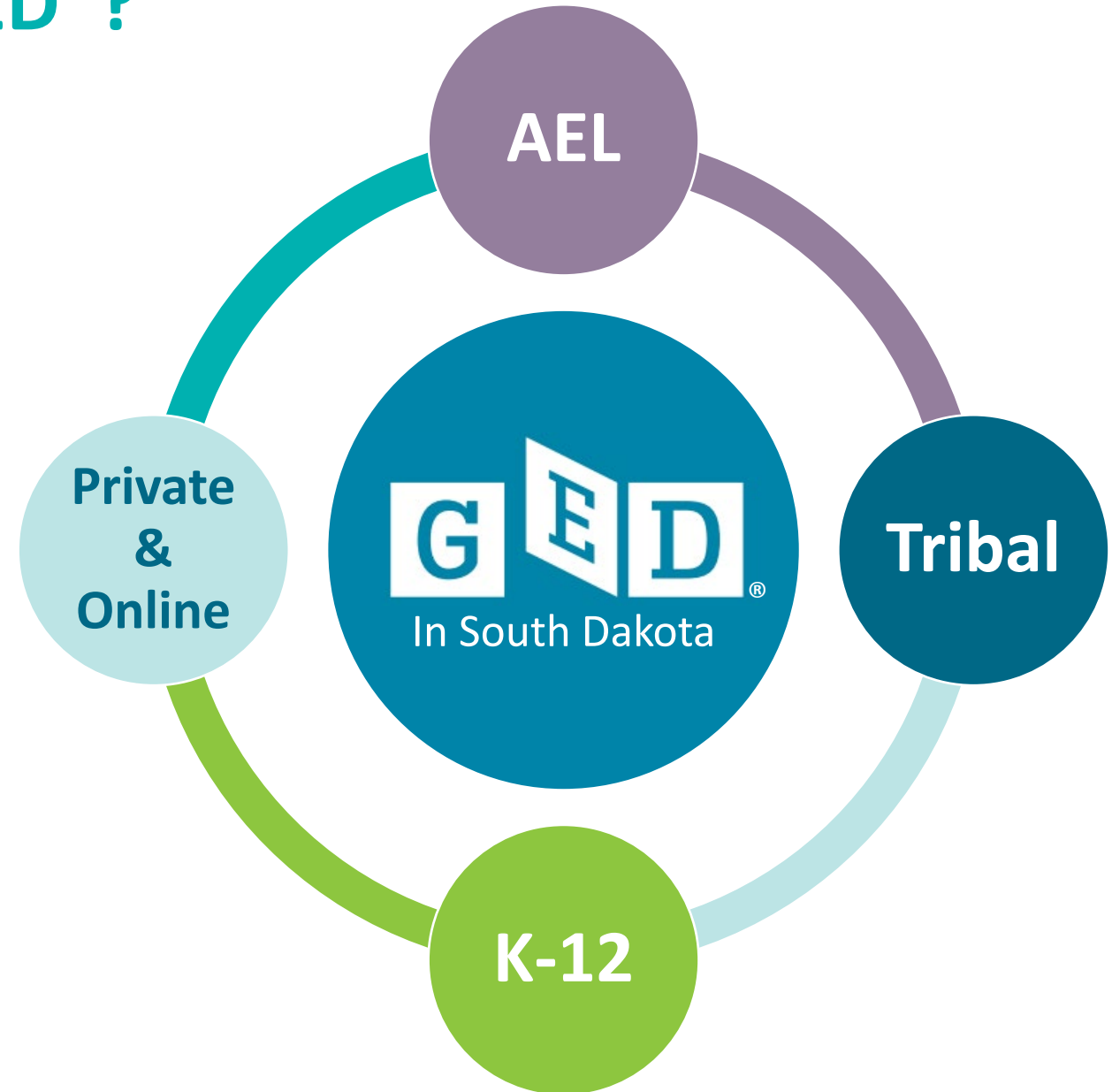
- Tribal Colleges & Universities
- Adult Education and Workforce

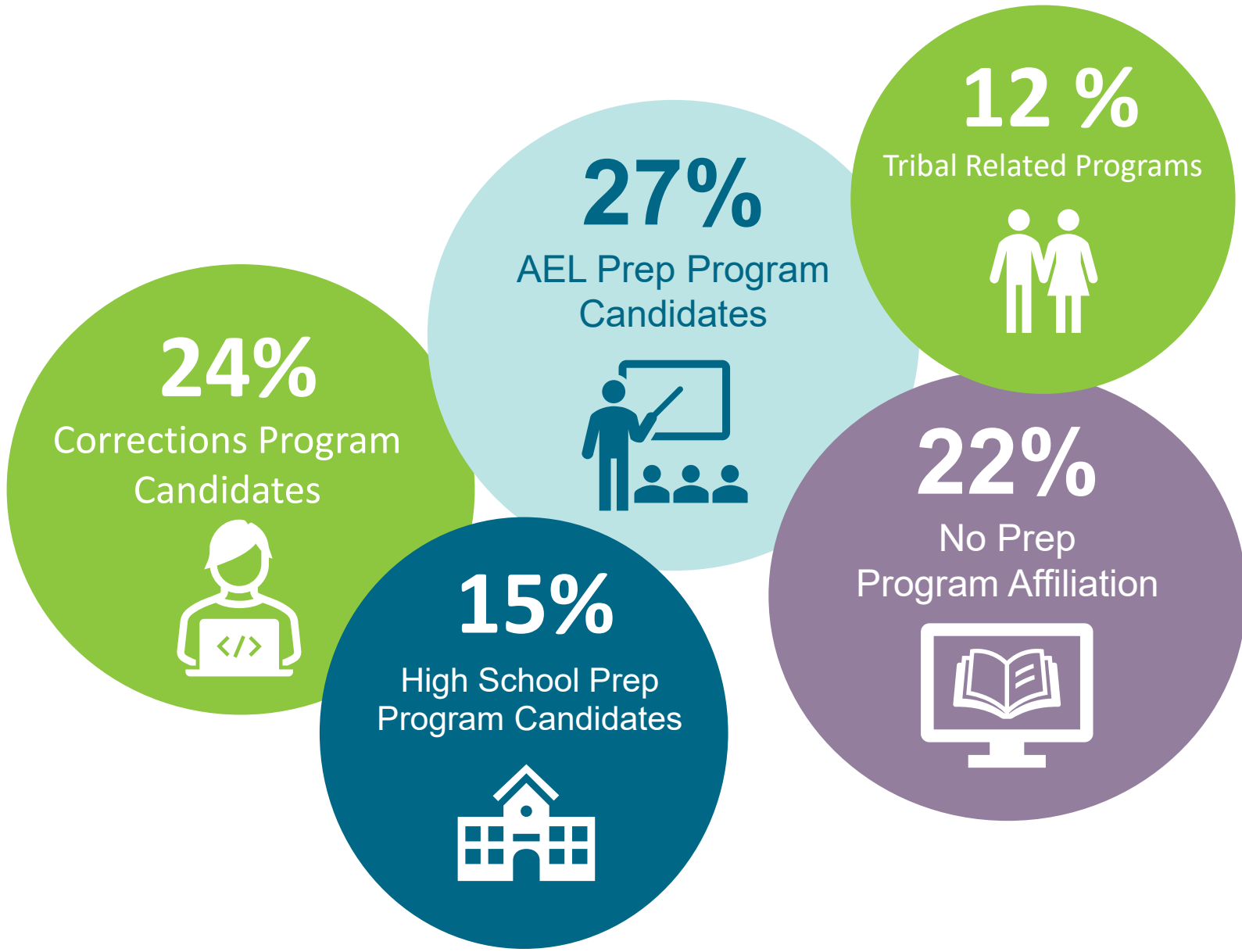
## School-Age Population

- In-school preparation programs
- Alternative Instruction students

## Private & Online (18+)

- Over 18, not in school, not associated with any other programs





**2023**

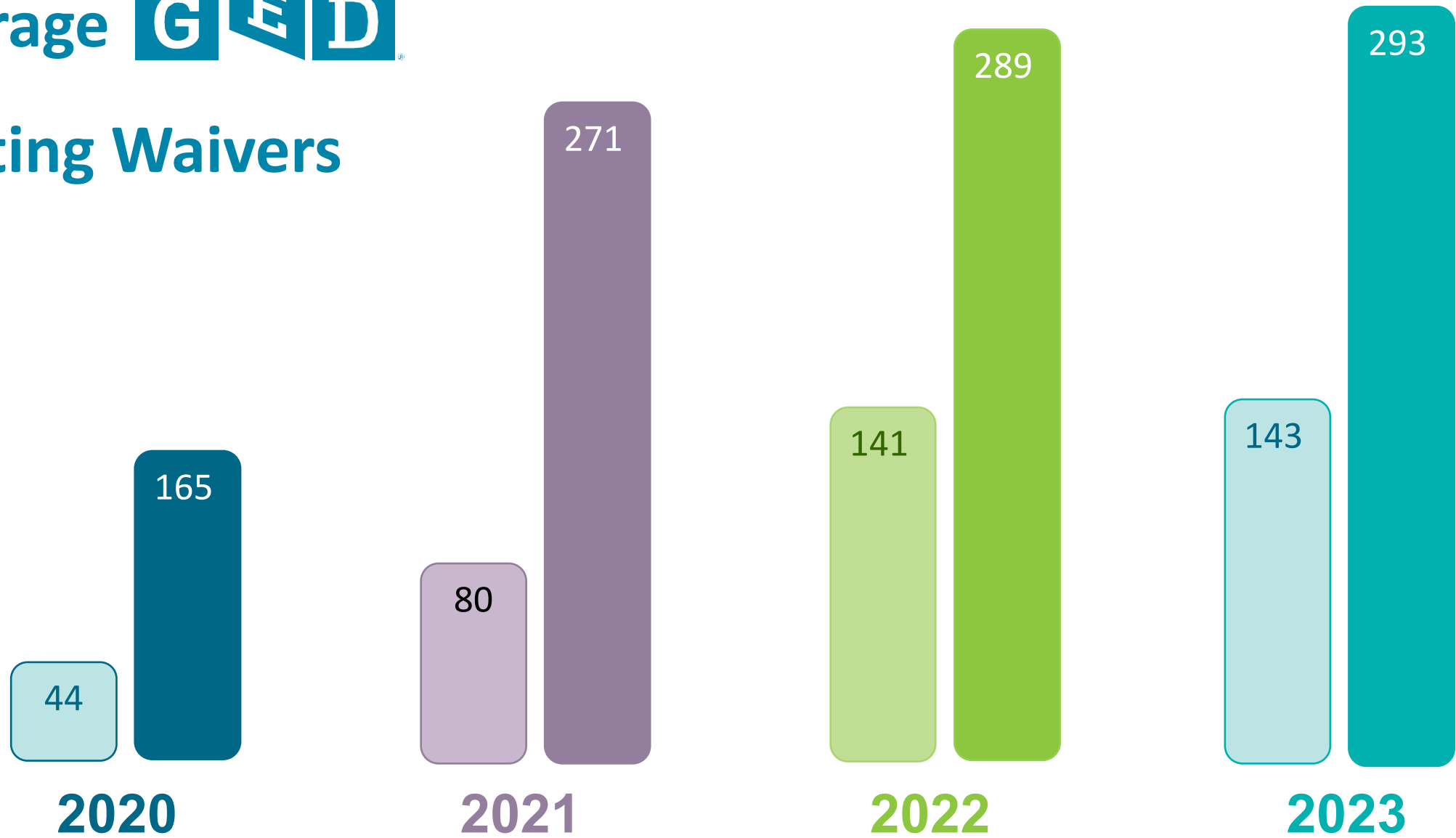
**PROGRAM PARTICIPATION**





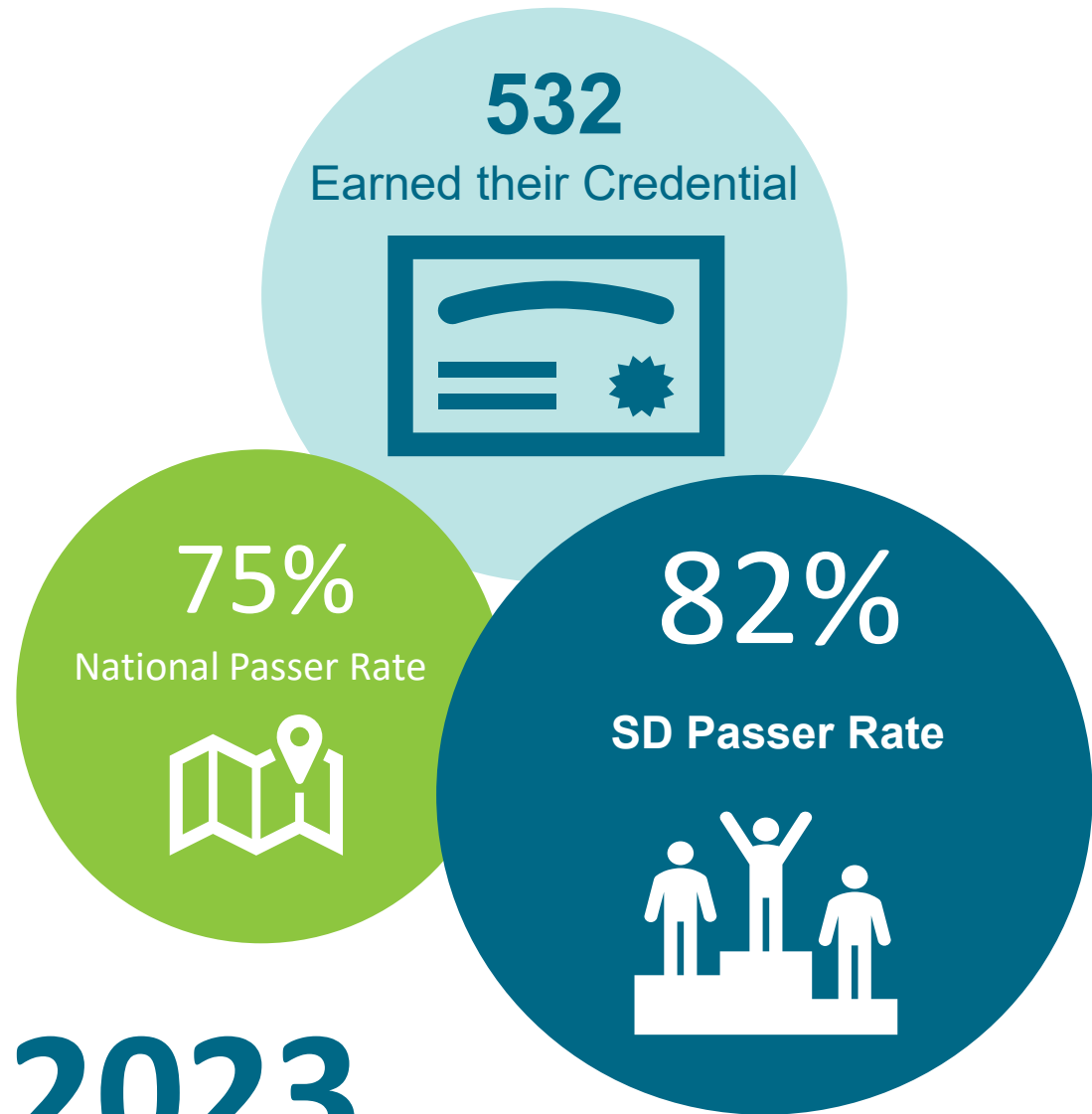
# Underage **G E D**

## Testing Waivers



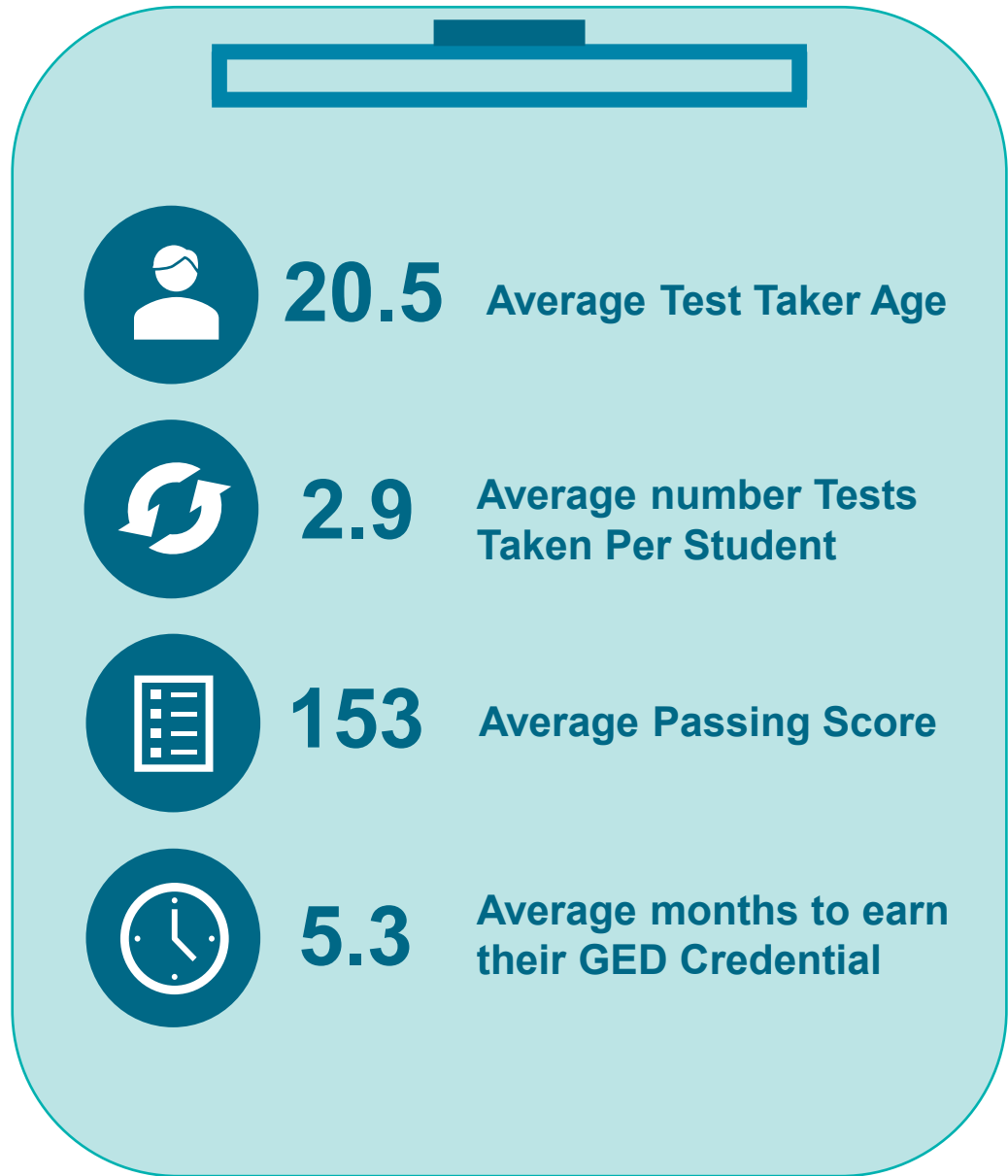
Alternative Instruction    

In-School    



# 2023

## Test Taker & Passer Data





# 2023



**3,511**  
Tests Taken



**2,937**  
In-person



**574**  
Online



**1,212**  
Unique  
Test Takers



**818**  
First Time  
Test Takers

42.81%

Test takers between the ages of 16-19



47.74%

Those who earned their GED® Credential between the ages of 16-19



33.88%

Test takers between the ages of 20-29



34.96%

Those who earned their GED® Credential between the ages of 20-29 years



21.98%

Test takers between the ages of 30-49



16.54%

Those who earned their GED® Credential between the ages of 30-49



1.24%

50+ test takers



1.24%

50+ credential earners



**Test Takers**  
those who took at least one test in 2023.

**Credential Earners**  
Those who completed all four tests and earned their credential in 2023.

# Test Taker & Credential Earners by Age 2023



# REASONING THROUGH LANGUAGE ARTS

- Reading for Meaning
- Grammar & Language
- Identifying and Creating Arguments



Time to Test:  
**150 minutes**



Cost: **\$50**

# SCIENCE

- Reading for Meaning in Science
- Designing & Interpreting Science Experiments
- Using Numbers and Graphs in Science



Time to Test:  
**90 minutes**



Cost: **\$50**

# SOCIAL STUDIES

- Reading for Meaning in Social Studies
- Analyzing Historical Events & Arguments in Social Studies
- Using Numbers & Graphs in Social Studies



Time to Test:  
**70 minutes**



Cost: **\$50**

**GED**  
**SUBJECT AREAS**

# MATHEMATICAL REASONING

- Graphs & Functions
- Basic High School Math
- Geometry
- Algebra



Time to Test:  
**115 minutes**



Cost: **\$50**

# Understanding GED Scores

**Not Passing (144 ↓ )**

A score in this range indicates the student has not yet demonstrated the skills necessary to earn their credential.

**High School Equivalency (145-164)**

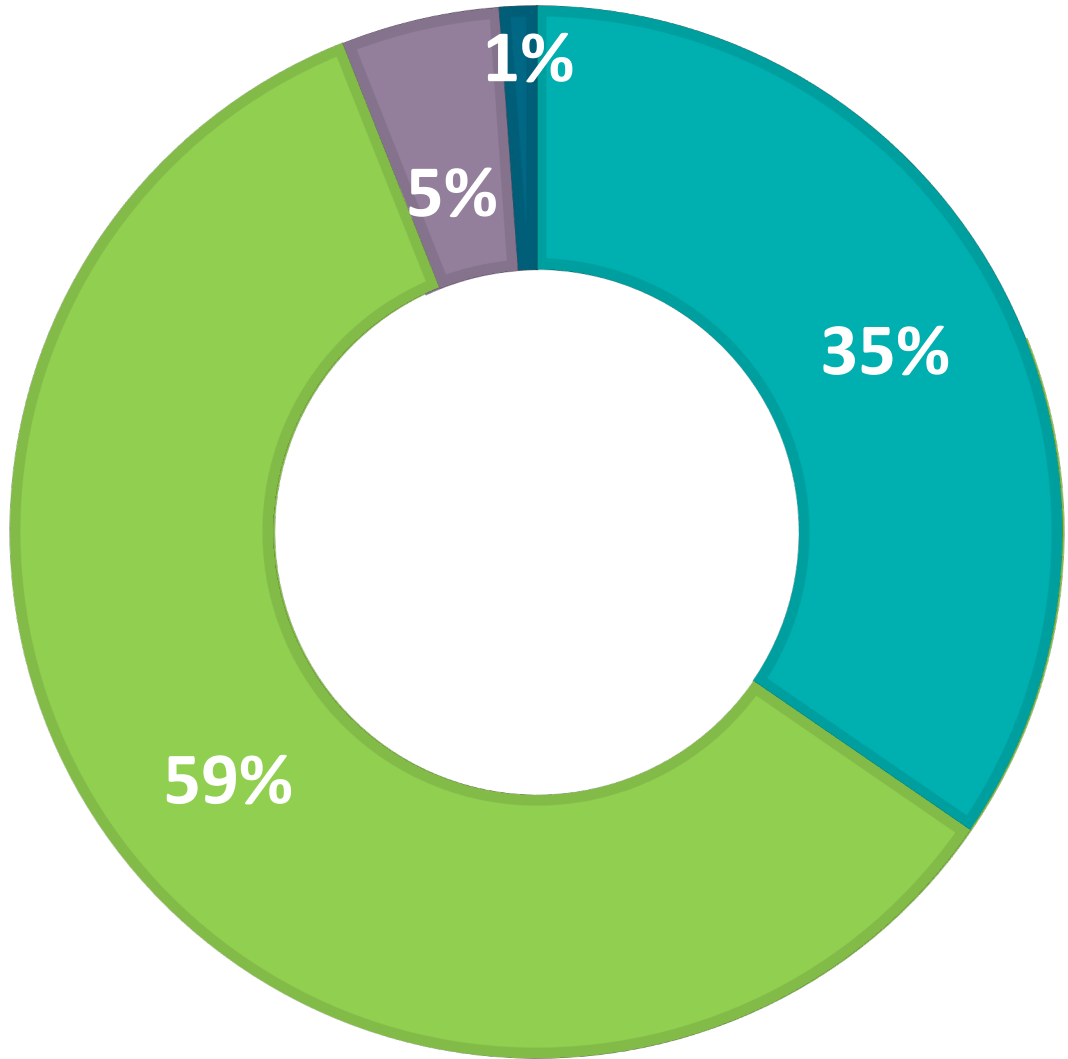
A score in this range means a student has the skills and knowledge equivalent to that of a high school graduate. These scores are set by the American Council<sup>®</sup> on Education.

**GED<sup>®</sup> College Ready (165-174)**





A score in this range indicates a student is both college and career ready. Some colleges require a score in this range to take college credit-bearing courses.

**GED<sup>®</sup> College Ready + Credit (175 ↑)**

A score in this range indicates that the student is demonstrating some knowledge and skills taught at the postsecondary level. Students may be eligible to earn college credit for scores in this range.



**882 Total**  
**Math Tests Attempted**  
Average Passing Math Score: 154

-  Non-passing Attempts
-  High School Equivalency (145-164)
-  College Ready (165-174)
-  College + Credit (175+)

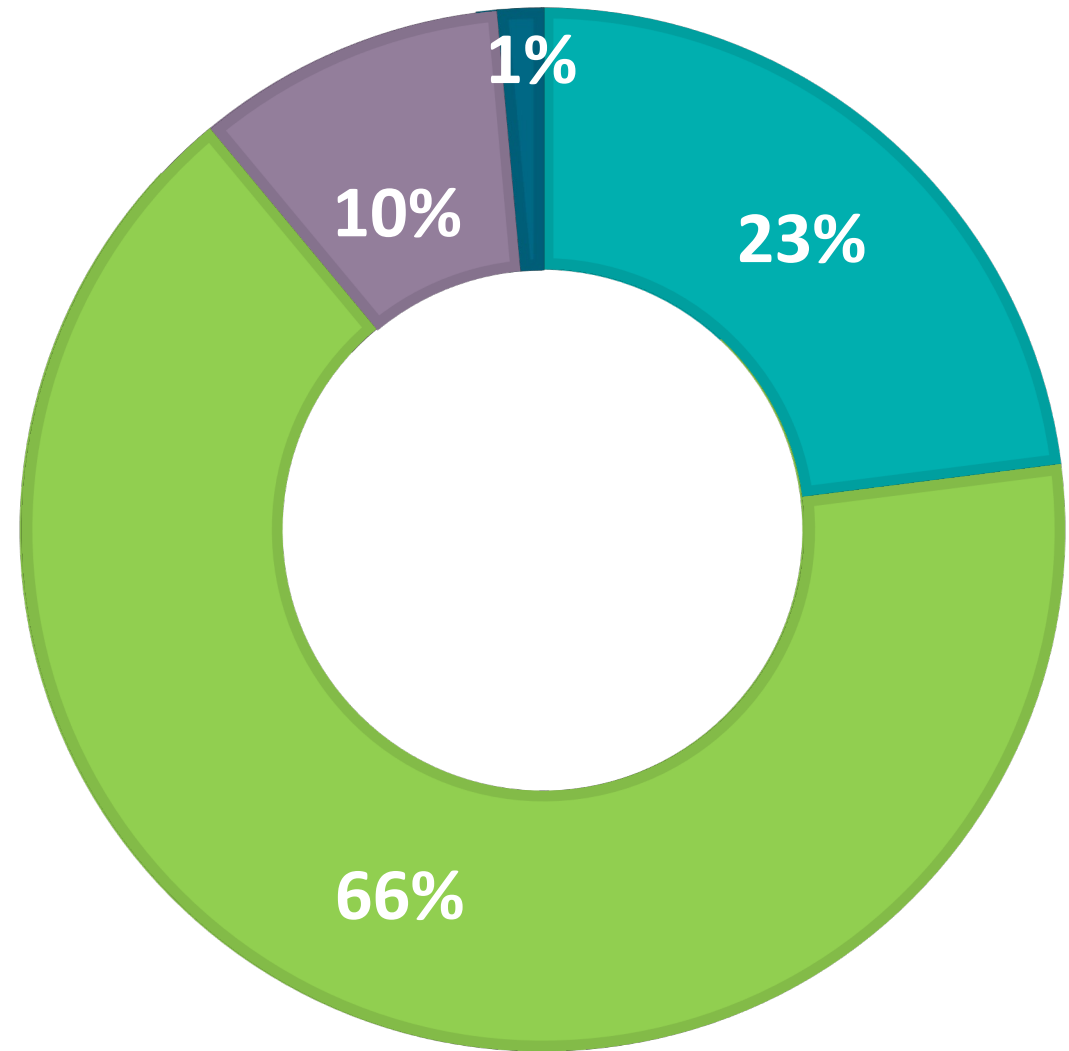


**MATH**

# REASONING THROUGH LANGUAGE ARTS (RLA)







- Non-passing Attempts
- High School Equivalency (145-164)
- College Ready (165-174)
- College + Credit (175+)

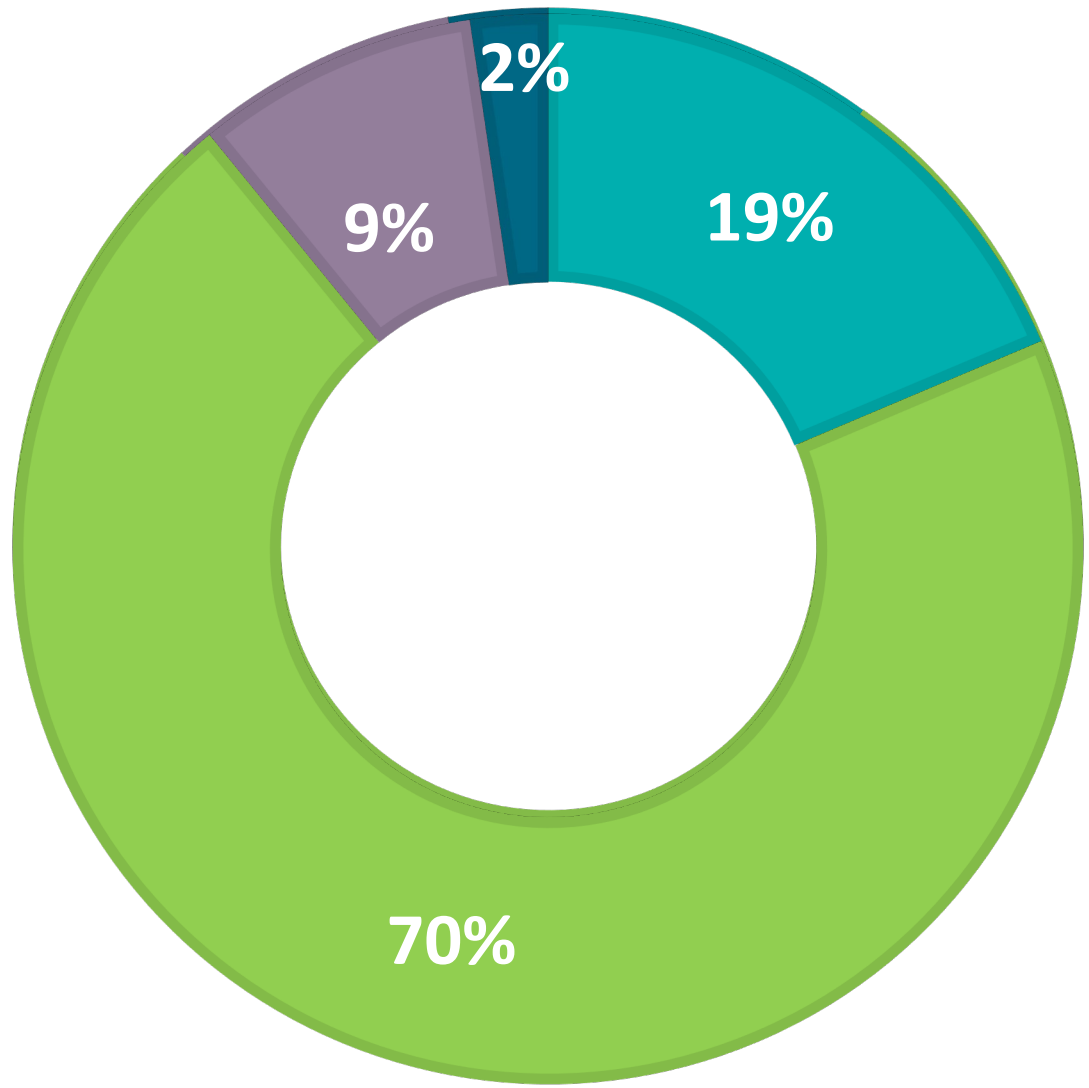


**844 Total**  
**RLA Tests Attempted**  
Average Passing RLA Score: 155



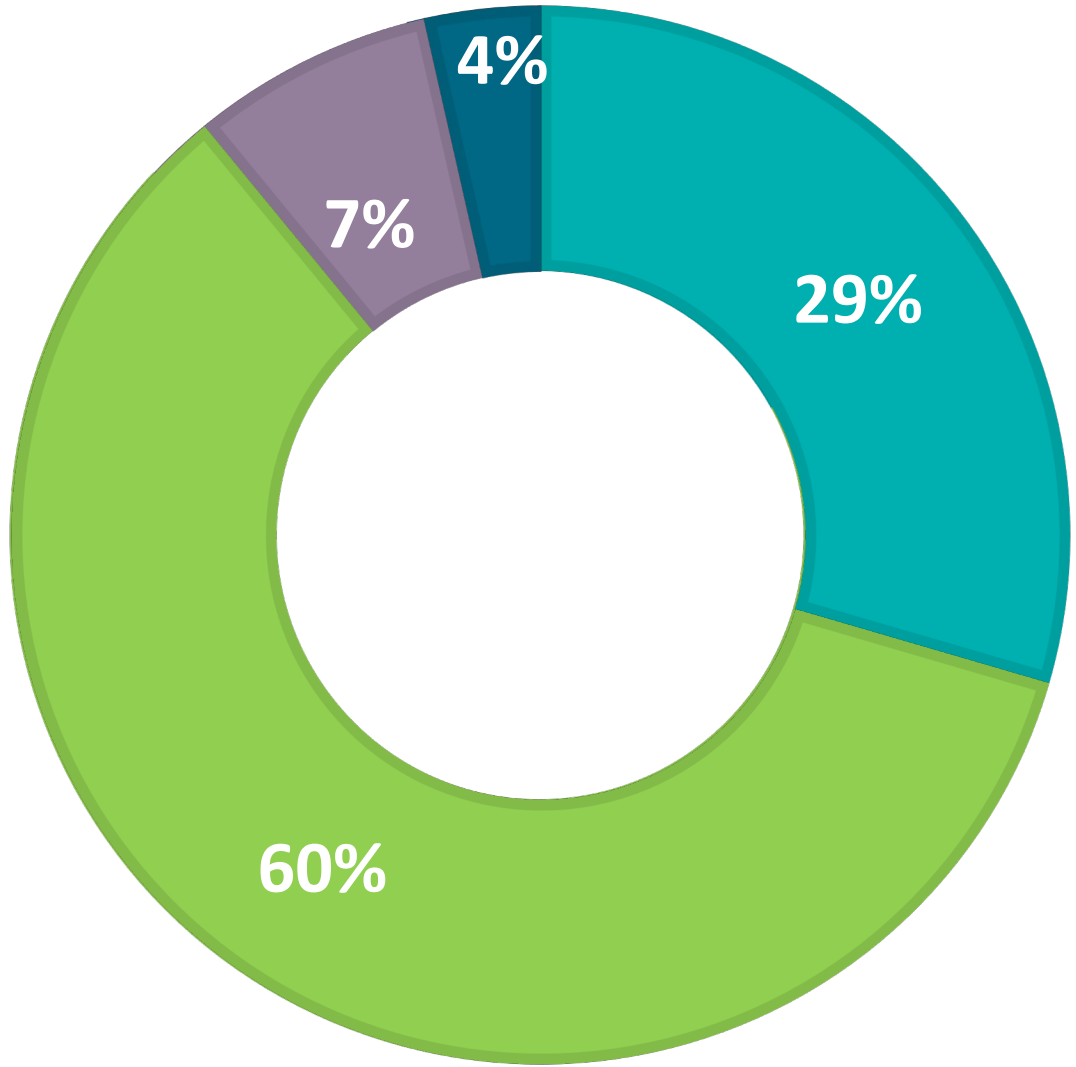
**853 Total  
Science Tests Attempted**  
Average Passing Science Score: 156

-  Non-passing Attempts
-  High School Equivalency (145-164)
-  College Ready (165-174)
-  College + Credit (175+)







**SCIENCE**





# 932 Total Social Studies Tests Attempted

Average Passing Social Studies Score: 156

-  Non-passing Attempts
-  High School Equivalency (145-164)
-  College Ready (165-174)
-  College + Credit (175+)



# SOCIAL STUDIES

## PRESENTED BY:



## RESOURCES



[GED.com Official Website](#)

[SDDOE High School Equivalency](#)

[DLR Adult Education and Literacy Programs](#)

[South Dakota State Library – HSE Center](#)

## HELP



[How to Create a GED® Account](#)

[GED® Frequently Asked Questions](#)

[Official Student “BlogGED” from GEDTS®](#)

[South Dakota Specific GED® Requirements](#)

## CONTACTS



Kristin Larson  
GED Administrator

[GED@state.sd.us](mailto:GED@state.sd.us)

605-773-4726

[Approved SD Testing & Prep Centers](#)