



## Child & Adult Nutrition Services

### Summer Feeding

Provides per meal reimbursement to schools, private non-profit organizations, and government entities for children in low-income areas when school is not in session.

#### Summer 2020

- 164 sponsors w/ 222 feeding sites
- **3,269,888** total meals served
- **\$17 million** of reimbursement provided directly to sponsors

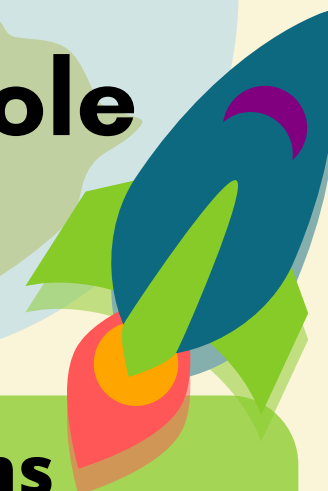
### Child Care Feeding

Provides per meal reimbursement to child day care centers, family and group day care homes, and adult day care centers.

#### Program Year 19-20

- 89 sponsors w/ 289 feeding sites
- 236 Day Care Home Providers
- **5,259,912** total meals and snacks served
- **\$5.9 million** of reimbursement provided directly to child care agencies

## Feeding The Whole Person The Whole Year



### Community Feeding Programs

#### Commodity Supplemental Food Program

- Offers a variety of nutritious domestically-grown foods that supplement qualifying seniors' diets
- **43,756** Senior Boxes were distributed in South Dakota throughout fiscal year 19-20

#### The Emergency Food Assistance Program

- USDA provides 100% domestically-grown foods to supplement low-income families
- 159,000+ cases of food were distributed to food banks and pantries in fiscal year 18-19

### School Feeding Programs

School feeding programs include; breakfast, lunch, after school snack, milk snack, and fresh fruit and vegetable snack.

#### School Year 19-20

- 194 sponsors w/ 715 feeding sites
- **13,915,290** lunches served
- **4,121,458** breakfasts served
- **\$34.5 million** of reimbursement provided directly to sponsors across all school feeding programs
- Approximately 60,323 (39.97%) students were approved for free & reduced price meals

### Food Distribution in Schools

In school year 19-20, **\$6.5 million** total federal dollars were spent to bring domestically grown foods into South Dakota schools for use in lunch and breakfast programs.

*Data pulled January 2021 and is subject to change. USDA waiver flexibilities had an impact on 19-20 data.*